



Transom Square, Isle Of Dogs, London, E14

Asking price **£285,000** | Leasehold



Transom Square, Isle Of Dogs, London, E14



1 Bedroom



1 Bathroom



1 Reception



Parking



Local Amenities



0.3 MI Mudchute

Introducing a generously sized one bedroom, one bathroom apartment with dedicated parking, nestled within the modern Transom Square development in E14.

This well-designed space features a welcoming living and dining area that is perfect for both relaxation and entertaining. The fully equipped kitchen boasts high-quality fittings and a well-proportioned bedroom. The bathroom is elegantly tiled, offering a contemporary and stylish environment.

This property is ideally situated just moments away from a vibrant selection of local restaurants, shops, and bars, as well as the extensive amenities available at the Canary Wharf shopping centre. For those commuting or exploring the city, the development enjoys excellent transport links.

Conveniently located near Island Gardens DLR station, which is just 0.4 miles away, and Mudchute DLR station, only 0.3 miles from your doorstep. Additionally, the nearby Thames Clipper services and Greenwich Foot Tunnel provide further access to other local transport options.

Tenure: Leasehold (91 years remaining)

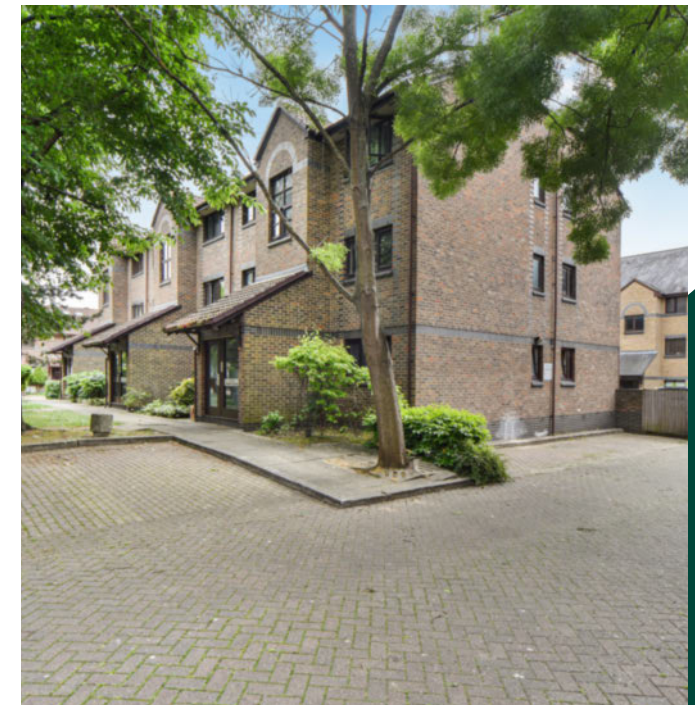
Local Authority: Tower Hamlets

Ground Rent: Peppercorn

Council Tax Band: C

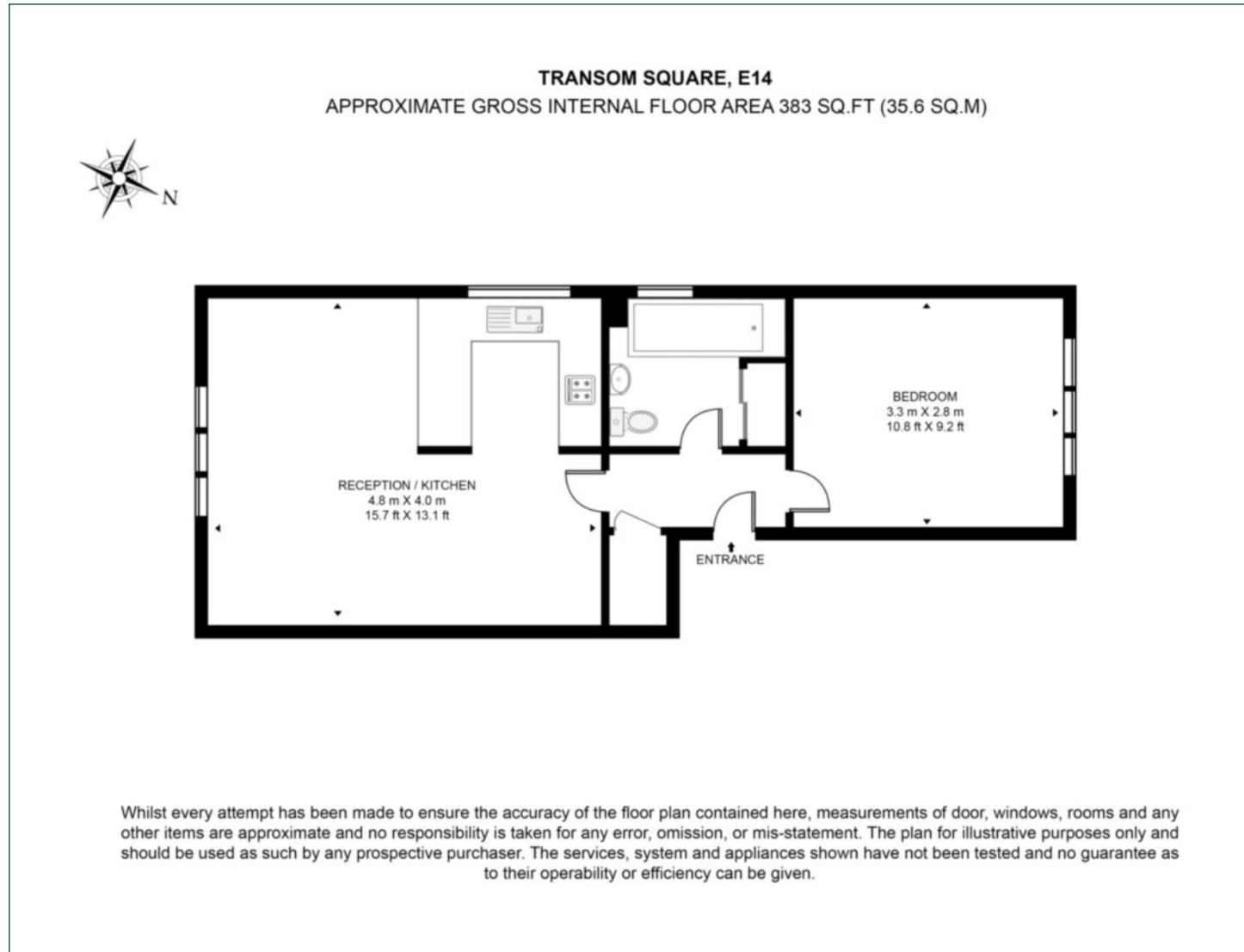
Service Charge: £1,400 p.a.

EPC: C



Floorplan

383 sq ft | 35.6 sq m



Docklands

St David's Square, 320 Westferry Road, London, E14 3QL

Sales

020 7510 8445 | docklands.sales@chaseevans.co.uk

We're here to help.

IMPORTANT NOTICE - These particulars have been prepared in good faith and they are not intended to constitute part of an offer or contract. We have not performed a structural survey on this property and the services, appliances and specific fittings have not been tested. All photographs, measurements, floor plans and distances referred to are given as a guide and should not be relied upon.

chaseevans.com

 Chase Evans