

The Factory, Horlicks Quarter, Memorial Avenue, SL1

Price **£460 per week** | Furnished



The Factory, Horlicks Quarter, Memorial Avenue, SL1



2 Bedrooms



2 Bathrooms



1 Reception



Gymnasium



Local Amenities



Concierge Service



0.5 MI Slough

A two bedroom, two bathroom apartment in The Factory, part of Horlicks Quarter, a high-spec development in Slough, SL6. The apartment comprises a spacious living area, stylish fitted kitchen with integrated appliances, modern bathroom suite, two generous bedrooms, master with built-in wardrobes and en suite.

Horlicks Quarter is a stylish collection of apartments in the Royal county of Berkshire, just 4 miles from historic Windsor and 22 miles from London. Residents of the development benefit from a concierge service, green open spaces, a nursery, gym, a co-working hub, and retail & commercial space. The development is also

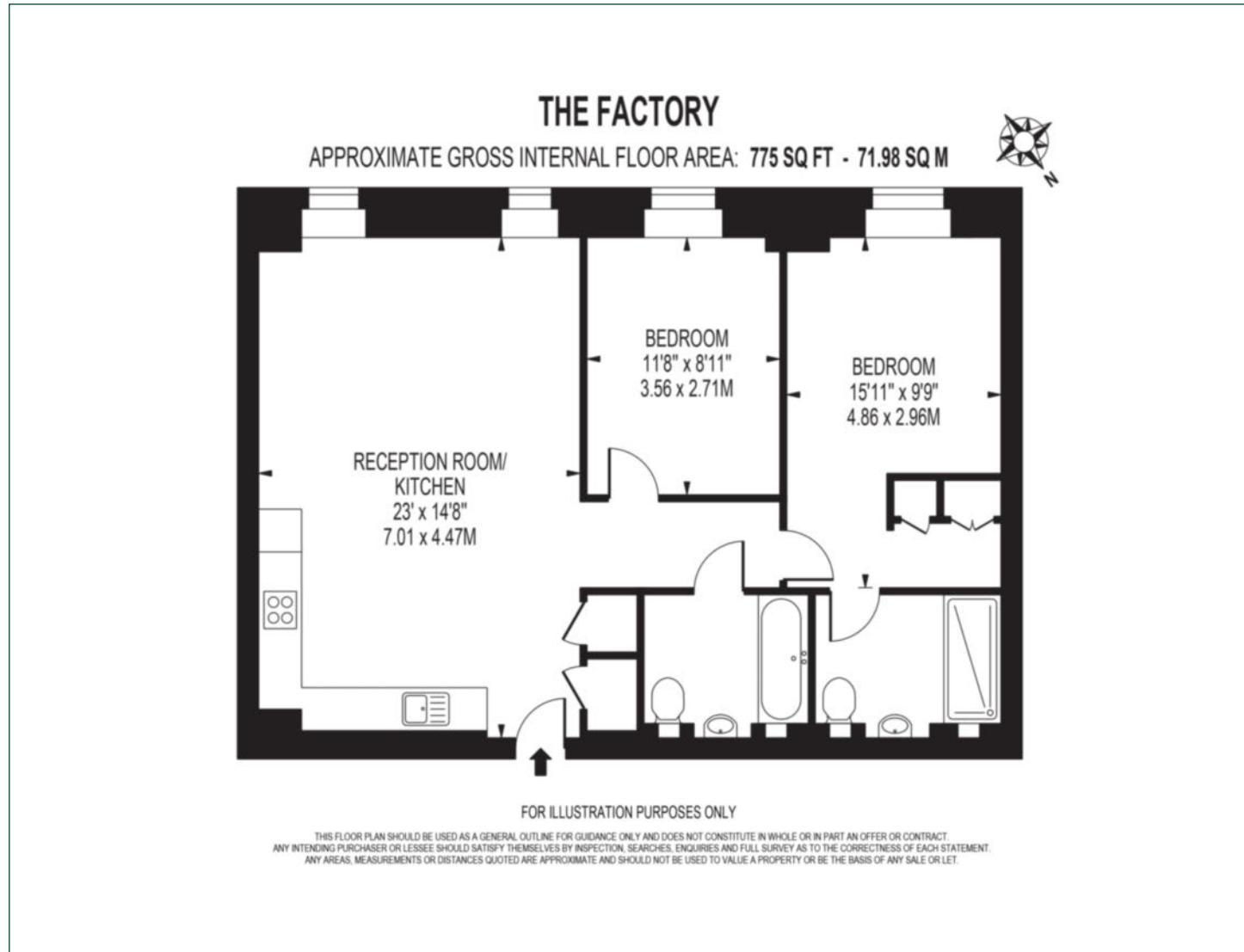
near numerous green spaces including Salt Hill Park with waterside pathways, play areas, tennis courts and a café.

There are plenty of amenities nearby, including restaurants, shops, cafes and bars as well as the Queensmere Observatory Shopping Centre. There is plenty to do and see in the area of Slough, from walking in ancient Burnham Beeches and golf at nearby Stoke Park to excellent shopping at Windsor. It is currently undergoing a major town regeneration. The nearest station is Slough (only 0.5 MI) with frequent trains to Paddington taking 30mins. The station is serviced by Great Western Railway and the Elizabeth line.

| | |
|--------------------------|-----------------------------|
| Local Authority: | Slough |
| Council Tax Band: | D |
| EPC: | B |
| Security deposit: | equivalent to 5 weeks' rent |

Floorplan

775 sq ft | 71.89 sq m



Docklands

St David's Square, 320 Westferry Road, London, E14 3QL

Lettings

020 7510 8444 | docklands.lettings@chaseevans.co.uk

We're here to help.

IMPORTANT NOTICE - These particulars have been prepared in good faith and they are not intended to constitute part of an offer or contract. We have not performed a structural survey on this property and the services, appliances and specific fittings have not been tested. All photographs, measurements, floor plans and distances referred to are given as a guide and should not be relied upon.

[chaseevans.com](https://www.chaseevans.com)