

Defoe House, London City Island, City Island Way, E14

Asking price **£390,000** | Leasehold



Defoe House, London City Island, City Island Way, E14



Studio



1 Bathroom



1 Reception



Balcony



Gymnasium



Local Amenities



Concierge Service



0.1 MI Canning Town

Charming studio apartment located in Defoe House, London City Island E14. This property features a stylish kitchen equipped with integrated appliances and sleek composite stone worktops, along with a bright open-plan living area accentuated by floor to ceiling windows that lead to a generous 64 sq ft, private balcony. The sleeping area is spacious and includes fitted wardrobe space, and there's a modern family bathroom suite.

Residents enjoy a range of on-site amenities, including a dedicated concierge service, health spa, gymnasium, treatment rooms, swimming pools,

and landscaped gardens. The development is conveniently situated just a 10-minute walk from Canning Town Underground and DLR stations, offering excellent transport links to London City Airport and other major destinations across the capital. Notably, Canary Wharf is only a 3-minute commute from Canning Town station via the Jubilee Line.

Tenure: Leasehold (989 years remaining)

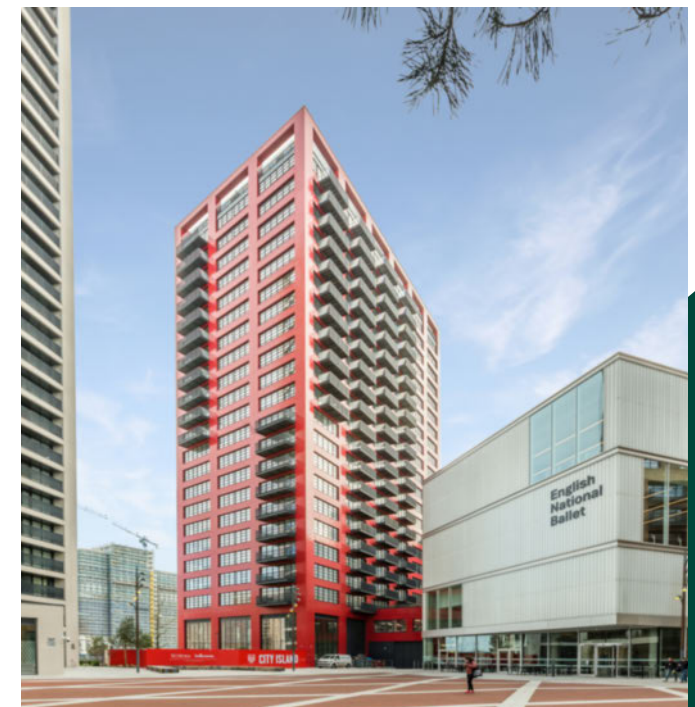
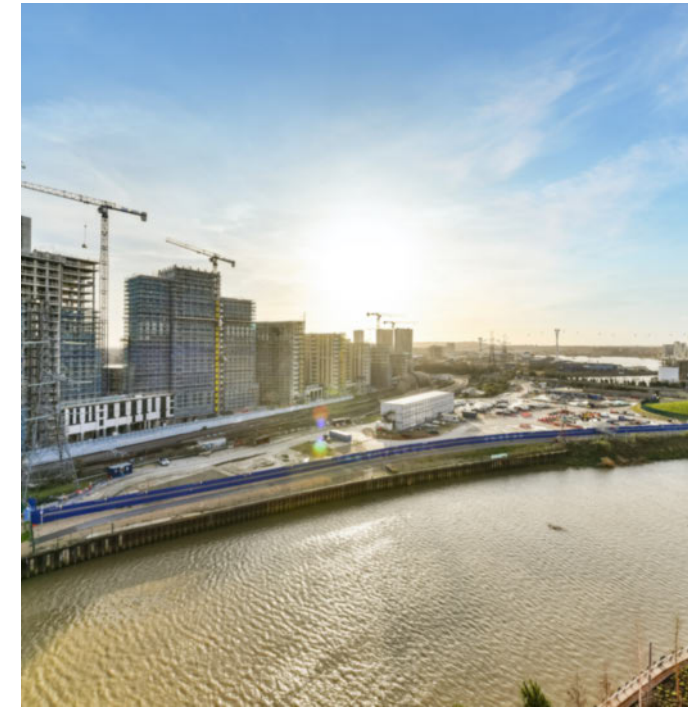
Local Authority: Newham London

Ground Rent: £400 p.a.

Council Tax Band: D

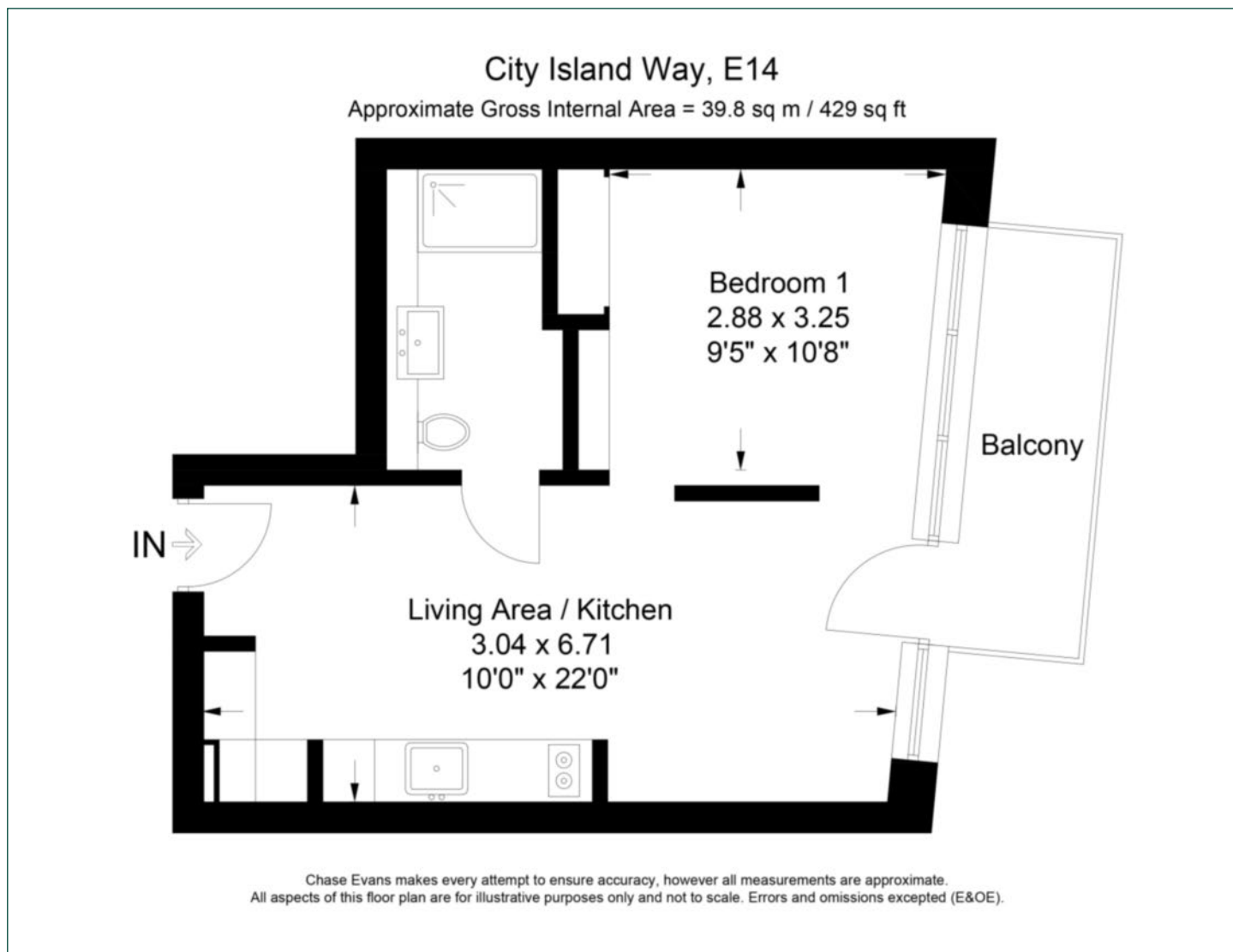
Service Charge: £3,200 p.a.

EPC: B



Floorplan

429 sq ft | 39.8 sq m



Docklands

St David's Square, 320 Westferry Road, London, E14 3QL

Sales

020 7510 8445 | docklands.sales@chaseevans.co.uk

We're here to help.

IMPORTANT NOTICE - These particulars have been prepared in good faith and they are not intended to constitute part of an offer or contract. We have not performed a structural survey on this property and the services, appliances and specific fittings have not been tested. All photographs, measurements, floor plans and distances referred to are given as a guide and should not be relied upon.

[chaseevans.com](https://www.chaseevans.com)