



St David's Square, Isle Of Dogs, London, E14

Asking price **£375,000** | Leasehold



St David's Square, Isle Of Dogs, London, E14



1 Bedroom



1 Bathroom



1 Reception



24-Hour Concierge



Leisure Facilities



Local Amenities

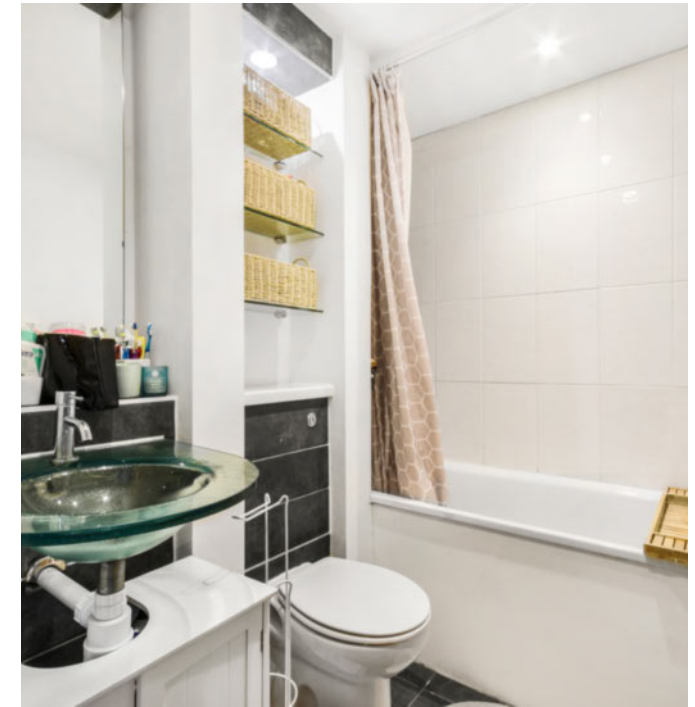


0.4 MI Island Gardens

Nestled in the sought-after riverside community of St David's Square on the Isle of Dogs, this one bedroom apartment boasts secure underground parking, a spacious private balcony, and a fully integrated galley kitchen. The bright living room and modern bathroom add to the appeal, while wood flooring and large double glazed windows create an inviting atmosphere.

Residents benefit from onsite amenities, including a gym and swimming pool. St David's Square is conveniently situated near a variety of local shops and services on Westferry Road, as well as the

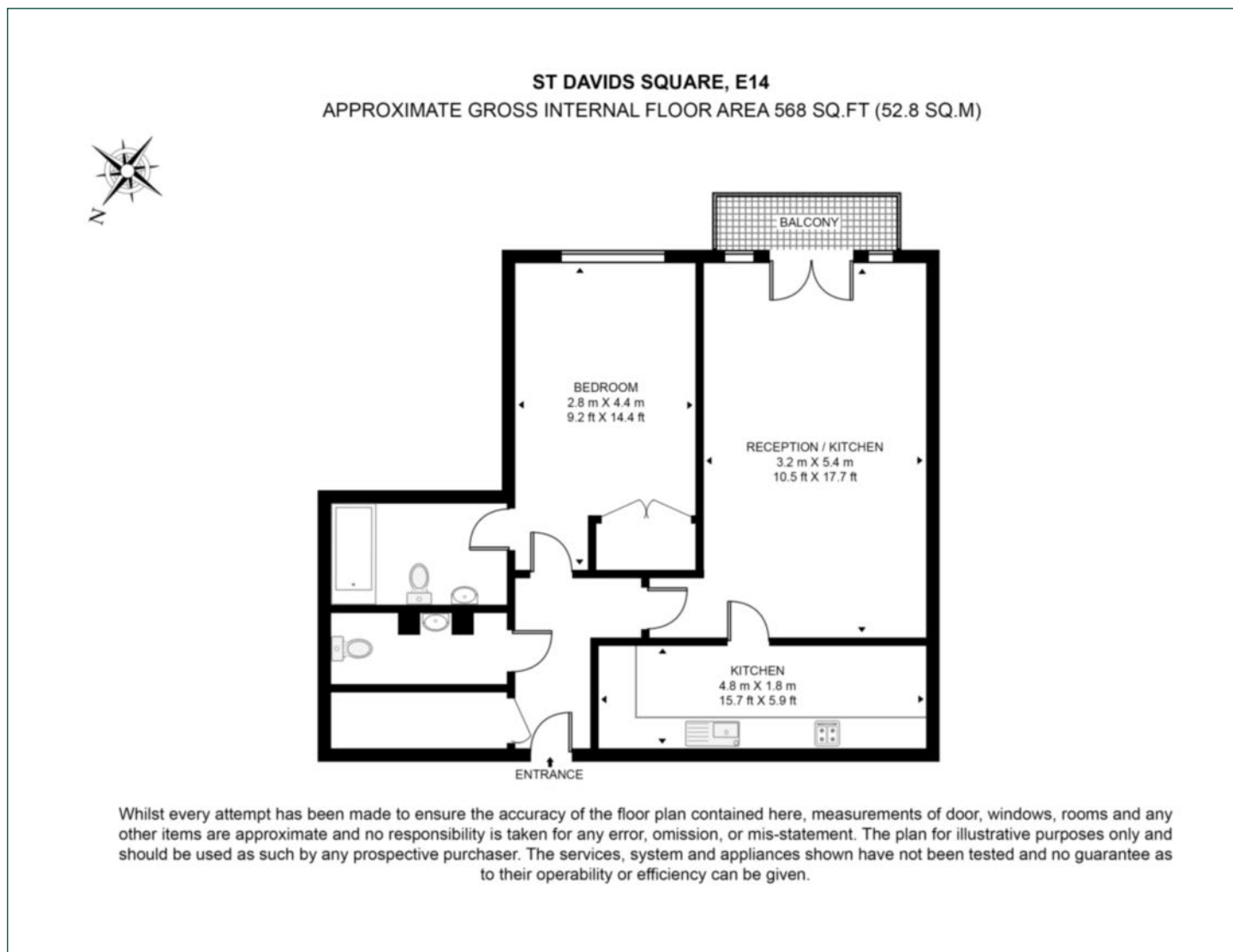
trendy Canary Wharf area and the River Thames. Additionally, transport links to the City and West End are easily accessible, with Island Gardens DLR station just 0.4 miles away.



Tenure:	Leasehold (974 years remaining)	Local Authority:	Tower Hamlets
Ground Rent:	£300 p.a.	Council Tax Band:	C
Service Charge:	£3,600 p.a.	EPC:	C

Floorplan

568 sq ft | 52.8 sq m



Docklands

St David's Square, 320 Westferry Road, London, E14 3QL

Sales

020 7510 8445 | docklands.sales@chaseevans.co.uk

We're here to help.

IMPORTANT NOTICE - These particulars have been prepared in good faith and they are not intended to constitute part of an offer or contract. We have not performed a structural survey on this property and the services, appliances and specific fittings have not been tested. All photographs, measurements, floor plans and distances referred to are given as a guide and should not be relied upon.

[chaseevans.com](https://www.chaseevans.com)

 Chase Evans