



## The Sphere, Hallsville Road, Canning Town, E16

Price **£410 per week** | Furnished



# The Sphere, Hallsville Road, Canning Town, E16



1 Bedroom



1 Bathroom



1 Reception



24-Hour Concierge



Lift Access



Local Amenities

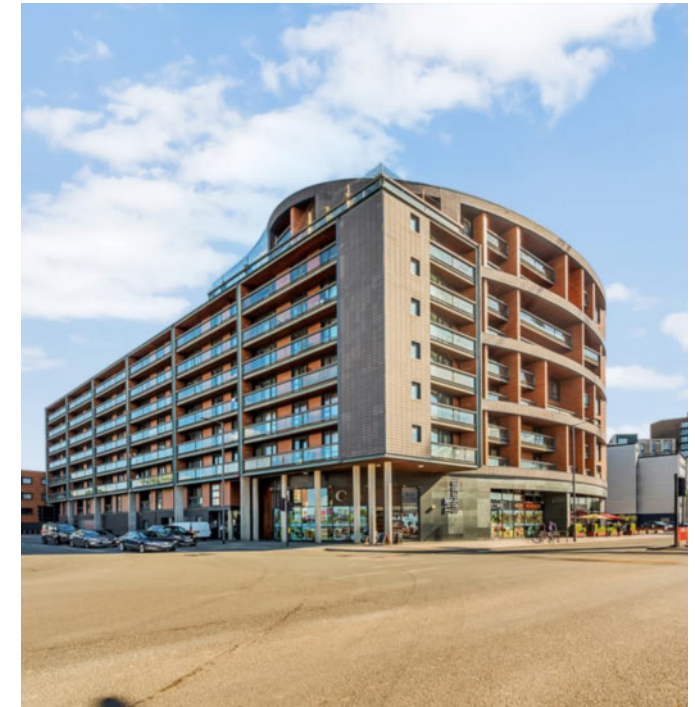


0.1 MI Canning Town

A one double bedroom high specification, furnished apartment situated within the intriguing The Sphere development. Offering east-facing views, a contemporary open-plan fitted and integrated galley kitchen, contemporary four piece bathroom suite, electric heating and floor-to-ceiling windows which maximise perceived space and natural light.

Residents benefit from in-house facilities including 24-hour security and internal lifts.

The development is just a short walk to Royal Docks and all its amenities including a selection of bars, shops and restaurants. Canning Town Underground and DLR stations are moments away for Jubilee line and DLR commutes across the capital, destinations such as Canary Wharf are just 12mins away, which opens up a number of options for further transport around the capital, particularly with access to the high-speed Elizabeth line at Canary Wharf Station.



**Local Authority:**

Newham London

**Council Tax Band:**

C

**EPC:**

C

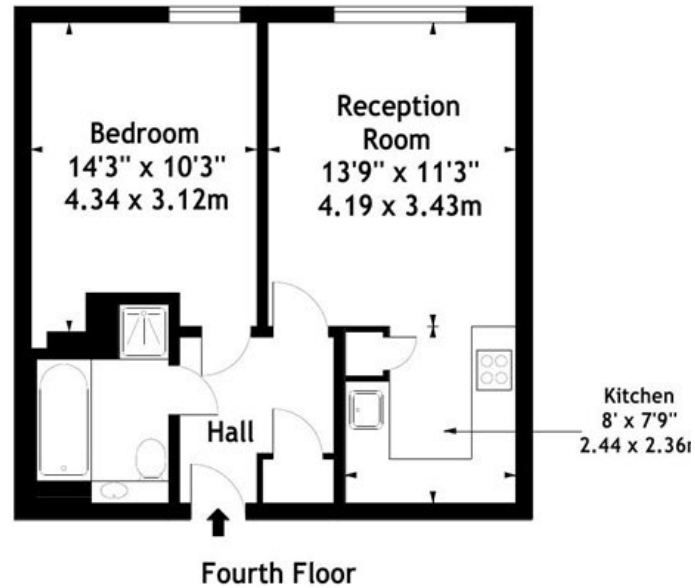
**Security deposit:**

equivalent to 5 weeks' rent

# Floorplan

477 sq ft | 44.31 sq m

The Sphere, E16  
Approx. Gross Internal Area  
477 Sq Ft - 44.31 Sq M



Measured in accordance with RICS guidelines. Every attempt is made to ensure accuracy, however all measurements are approximate. This floor plan is for illustrative purposes only and is not to scale.

© Datography Ltd 2015  
Photographs \* Floorplans \* Virtual Tours  
Tel: 0845 643 4401 www.datography.com

## Docklands

St David's Square, 320 Westferry Road, London, E14 3QL

## Lettings

020 7510 8444 | docklands.lettings@chaseevans.co.uk

## We're here to help.

IMPORTANT NOTICE - These particulars have been prepared in good faith and they are not intended to constitute part of an offer or contract. We have not performed a structural survey on this property and the services, appliances and specific fittings have not been tested. All photographs, measurements, floor plans and distances referred to are given as a guide and should not be relied upon.

[chaseevans.com](http://chaseevans.com)

 Chase Evans