



Cahir Street, Isle of Dogs, E14

Price **£510 per week** | Furnished



Cahir Street, Isle of Dogs, E14



2 Bedrooms



1 Bathroom



1 Reception



Garden



Nearby Green Spaces



Local Amenities



0.5 MI Mudchute

A great size two double bedroom Dockers Cottage offered unfurnished. This property contains some original features, wood flooring, separate kitchen and benefits from modern bathroom, large built in wardrobe to master bedroom and a good size rear garden.

Located within a short distance of Mudchute DLR and the Thames Clipper service. There are also local bus routes on the doorstep of the property as well as local shops and restaurants. Ideal for commuting to Canary Wharf by walking, DLR or by bus.

Local Authority: Tower Hamlets

Council Tax Band: D

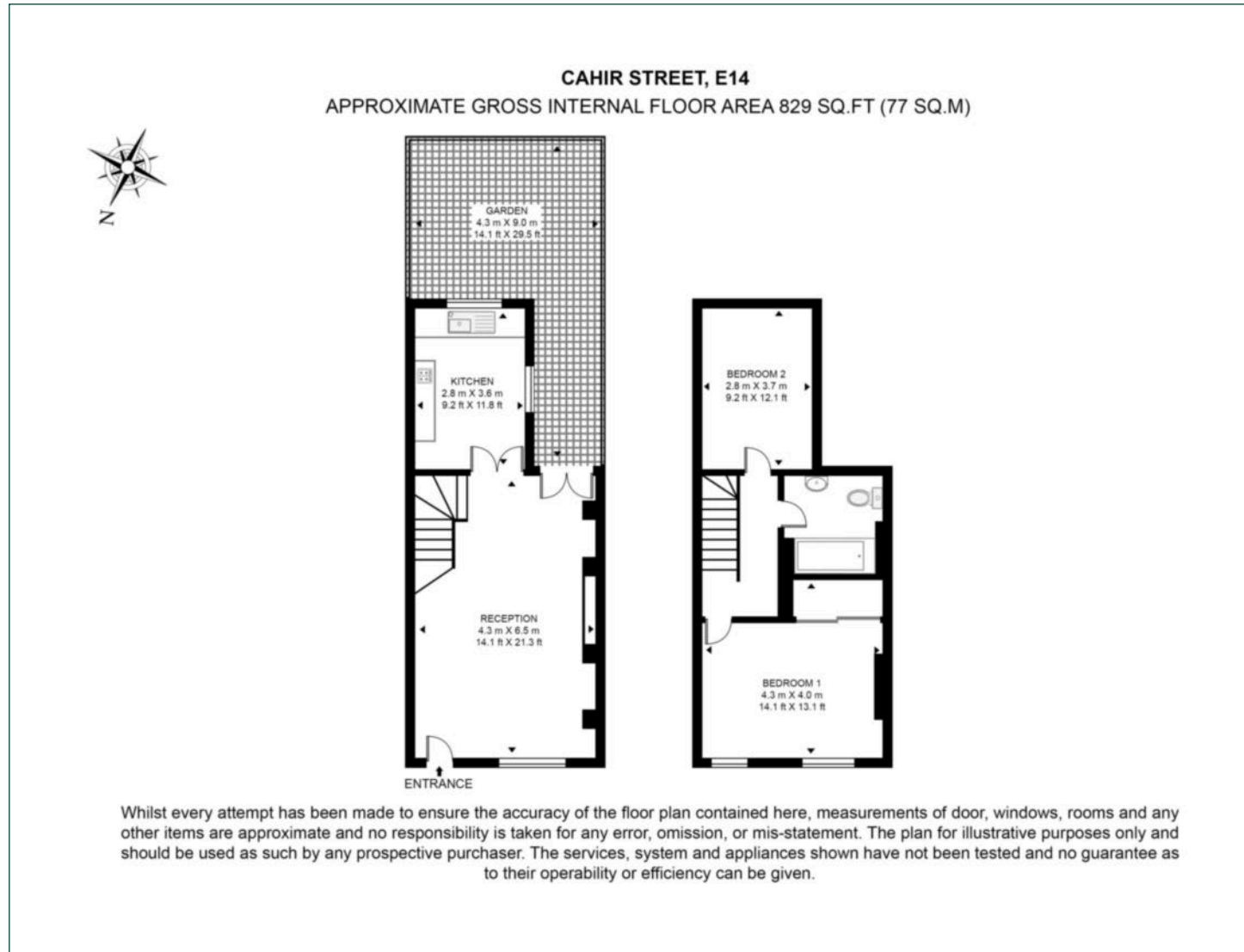
EPC: D

Security deposit: equivalent to 5 weeks' rent



Floorplan

829 sq ft | 77 sq m



Docklands

St David's Square, 320 Westferry Road, London, E14 3QL

Lettings

020 7510 8444 | docklands.lettings@chaseevans.co.uk

We're here to help.

IMPORTANT NOTICE - These particulars have been prepared in good faith and they are not intended to constitute part of an offer or contract. We have not performed a structural survey on this property and the services, appliances and specific fittings have not been tested. All photographs, measurements, floor plans and distances referred to are given as a guide and should not be relied upon.

chaseevans.com