



## Langbourne Place, Westferry Road, Isle of Dogs, E14

Price **£575 per week** | Furnished





# Langbourne Place, Westferry Road, Isle of Dogs, E14



2 Bedrooms



2 Bathrooms



1 Reception



Balcony



Riverside Development



Secure Parking



Concierge Service



0.3 MI Island Gardens

Stunning fully furnished two bedroom, two bathroom apartment with parking set on the ninth floor of Langbourne Place, a contemporary and secure, riverside development in Isle of Dogs E14.

The property enjoys direct views of the River Thames from a spacious dual-aspect living/dining area which opens onto a private balcony with river views, an open-plan kitchen with fully integrated appliances, a master bedroom with an en suite, a second double bedroom and a full size family bathroom. Plenty of storage throughout.

Residents benefit from being located in a secure gated development with secure parking and concierge service. Locally, there are an array of convenience shops, a supermarket, restaurants and bars.

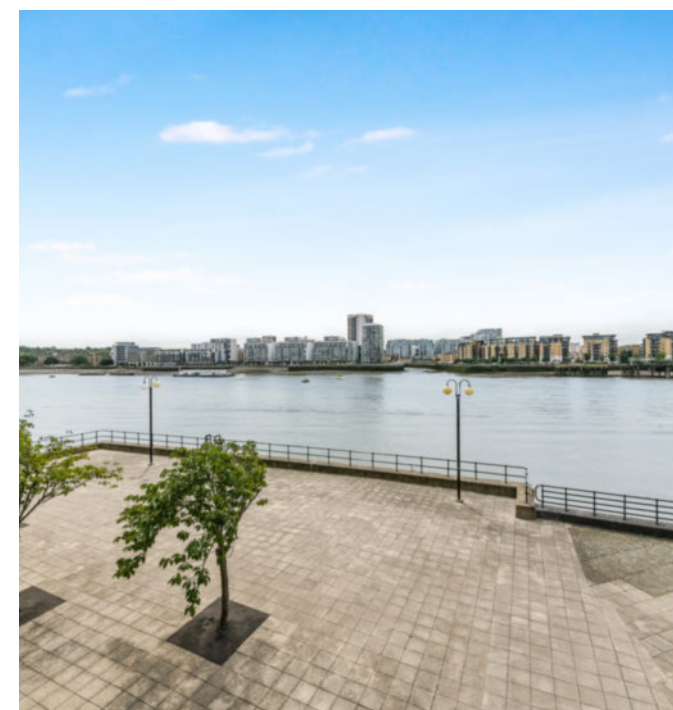
The development is only moments from Island Gardens and Mudchute DLR station which provides connection to the rest of London, as well as Masthouse Terrace Pier for Thames Clipper Services to Westminster and beyond. Via DLR services at Heron Quays, this property is only a short 13-min commute to Canary Wharf.

**Local Authority:** Tower Hamlets

**Council Tax Band:** E

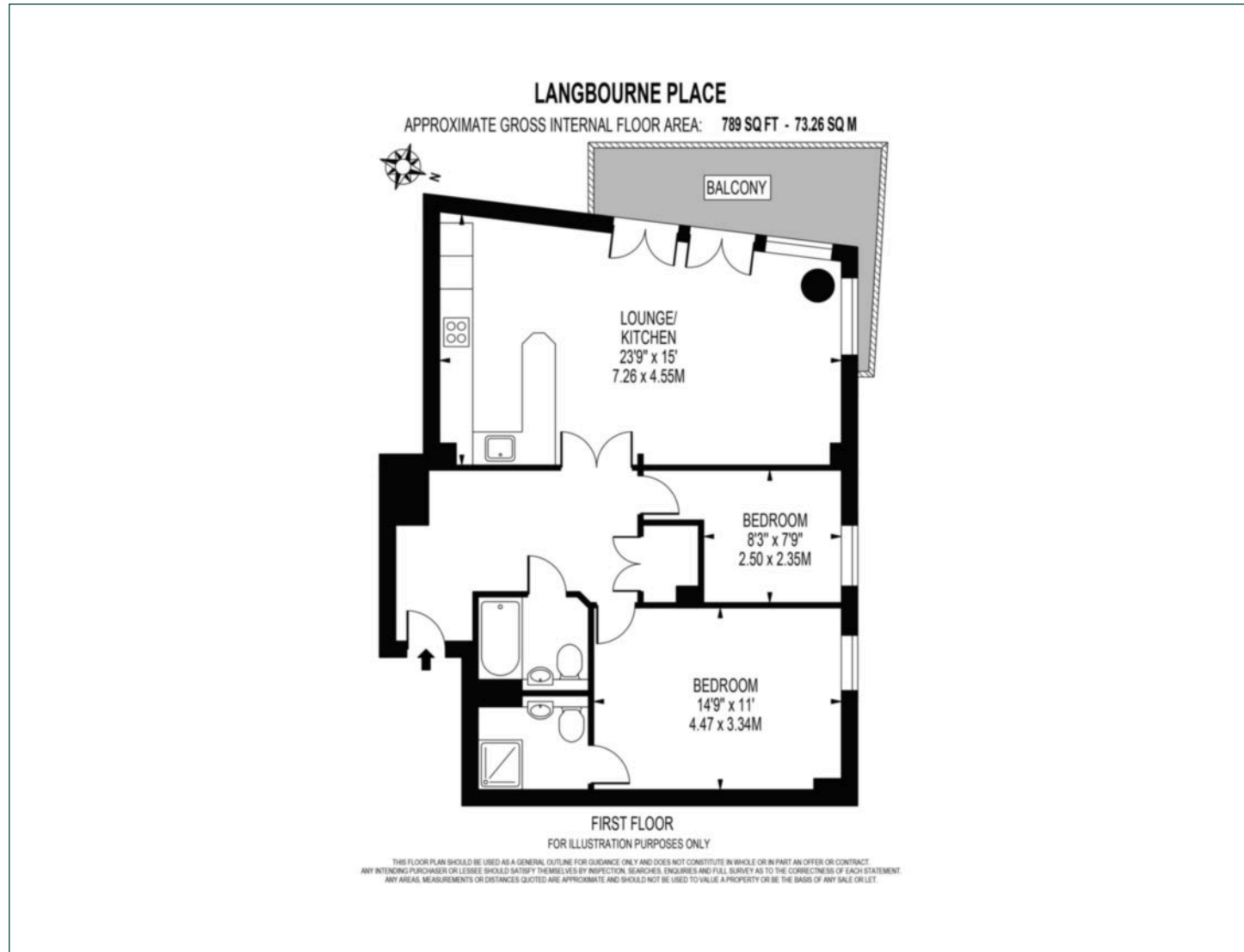
**EPC:** C

**Security deposit:** equivalent to 5 weeks' rent



# Floorplan

789 sq ft | 73.26 sq m



## Docklands

St David's Square, 320 Westferry Road, London, E14 3QL

## Lettings

020 7510 8444 | [docklands.lettings@chaseevans.co.uk](mailto:docklands.lettings@chaseevans.co.uk)

## We're here to help.

IMPORTANT NOTICE - These particulars have been prepared in good faith and they are not intended to constitute part of an offer or contract. We have not performed a structural survey on this property and the services, appliances and specific fittings have not been tested. All photographs, measurements, floor plans and distances referred to are given as a guide and should not be relied upon.

[chaseevans.com](https://www.chaseevans.com)