










## Hallywell Crescent, Beckton, E6

OIEO **£625,000** | Freehold





# Hallywell Crescent, Beckton, E6

-  6 Bedrooms
-  5 Bathrooms
-  1 Reception
-  Private Garden
-  Garage & Driveway
-  Close to City Airport
-  0.3 MI Beckton

A very spacious and bright six bedroom, four bathroom plus two guest cloakroom, mid-century terraced townhouse offering flexible living space with parking and a private garden in a quiet neighbourhood in Beckton E6.

An ideal investment, or upsizing property for a growing family. Set over four floors, it has a large kitchen/dining room and guest WC on the ground floor which opens onto the south facing garden. All bedrooms are arranged over upper floors including four full bathrooms and an additional W.C. The nearest station is Becton DLR, a stroll away. The

location is very convenient for accessing London City Airport, the ExCel exhibition centre and the North Circular Road.

**Tenure:** Freehold

**Local Authority:** Newham

**Ground Rent:** N/A

**Council Tax Band:** E

**Service Charge:** N/A

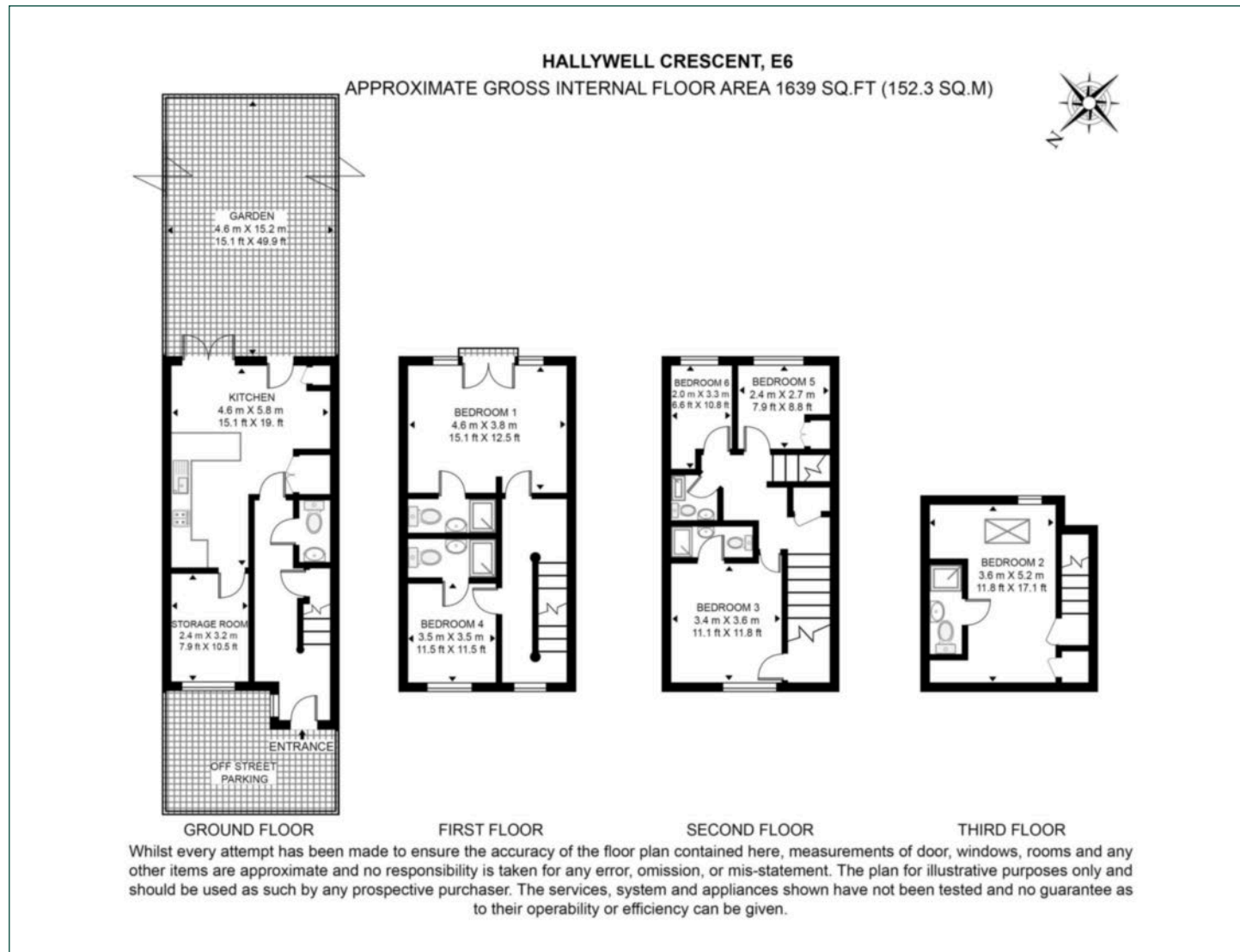
**EPC:** C





# Floorplan

1,634 sq ft | 151.8 sq m



## Docklands

St David's Square, 320 Westferry Road, London, E14 3QL

## Sales

020 7510 8445 | [docklands.sales@chaseevans.co.uk](mailto:docklands.sales@chaseevans.co.uk)

## We're here to help.

IMPORTANT NOTICE - These particulars have been prepared in good faith and they are not intended to constitute part of an offer or contract. We have not performed a structural survey on this property and the services, appliances and specific fittings have not been tested. All photographs, measurements, floor plans and distances referred to are given as a guide and should not be relied upon.

[chaseevans.com](http://chaseevans.com)