



St Davids Square, Isle of Dogs, E14

Price **£877 per week** | Furnished



St Davids Square, Isle of Dogs, E14



4 Bedrooms



2 Bathrooms



1 Reception



2 Terraces



2 Balcony



River Views



Gymnasium



24-Hour Concierge



0.4 MI Mudchute

A spacious four/five double bedroom, two bathroom, four storey townhouse situated in the popular riverside St Davids Square development. The property comes with a large terrace off the reception offering River Thames views, separate kitchen/diner, spacious reception room, guest cloakroom, four ample sized bedrooms, master with fitted wardrobes and en-suite, a second terrace and balcony accessed from one of the bedrooms.

Residents of the development are privileged with 24-hour concierge service, off street parking,

extensive leisure facilities including gymnasium and swimming pool and games room. Located only moments from local shops, parks and Island Gardens and Mudchute DLR station giving easy access into Canary Wharf and the city and the Greenwich foot tunnel.

Local Authority:

Tower Hamlets

Council Tax Band:

E

EPC:

C

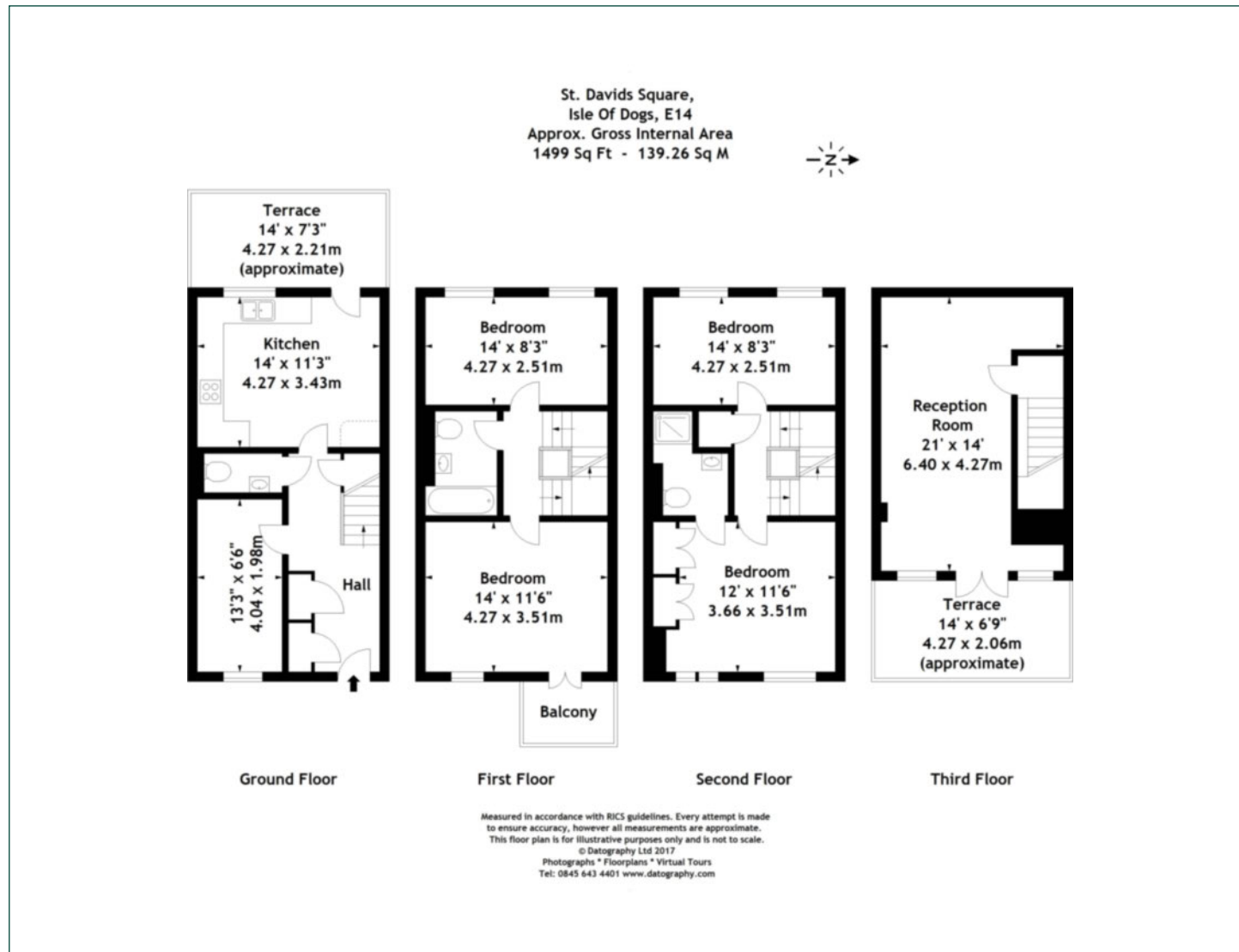
Security deposit:

equivalent to 5 weeks' rent



Floorplan

1,499 sq ft | 139.26 sq m



Docklands

St David's Square, 320 Westferry Road, London, E14 3QL

Lettings

020 7510 8444 | docklands.lettings@chaseevans.co.uk

We're here to help.

IMPORTANT NOTICE - These particulars have been prepared in good faith and they are not intended to constitute part of an offer or contract. We have not performed a structural survey on this property and the services, appliances and specific fittings have not been tested. All photographs, measurements, floor plans and distances referred to are given as a guide and should not be relied upon.

chaseevans.com

 Chase Evans