



## The Sphere, Hallsville Road, Canning Town, E16

Price **£410 per week** | Furnished



# The Sphere, Hallsville Road, Canning Town, E16



1 Bedroom



1 Bathroom



1 Reception



Balcony



Lift Access



Local Amenities



24-Hour Concierge

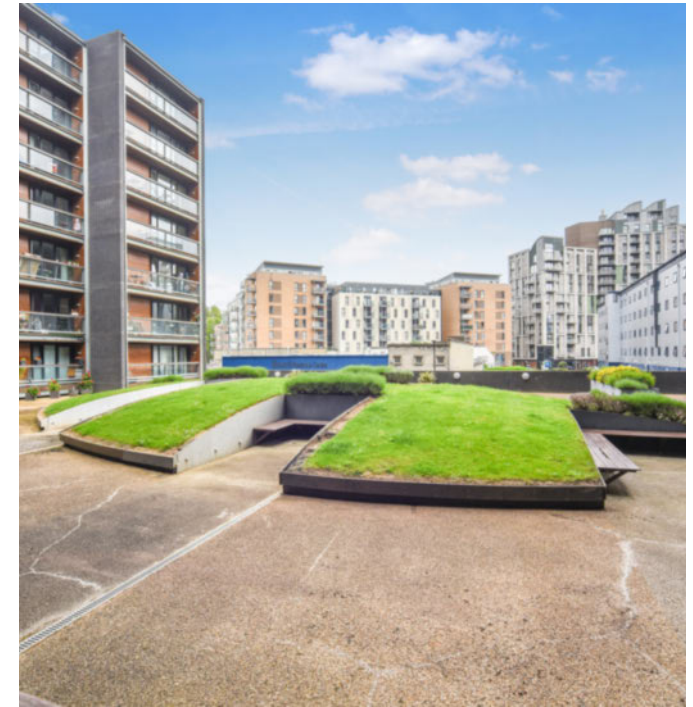


0.1 MI Canning Town

A nicely furnished one double bedroom apartment with balcony looking into a courtyard situated within the popular The Sphere development, Canning Town E16. The property benefits from fully integrated kitchen, bright living area, sizable bedroom, contemporary bathroom suite and a private balcony. links for commutes across the Capital.

The Sphere offers life a access and a 24-hour porter service. There are several amenities located nearby including restaurants and cafés. The development is located moments from Canning Town DLR and Underground stations, providing valuable transport

<b>Local Authority:</b>	Newham London
<b>Council Tax Band:</b>	C
<b>EPC:</b>	C
<b>Security deposit:</b>	equivalent to 5 weeks' rent

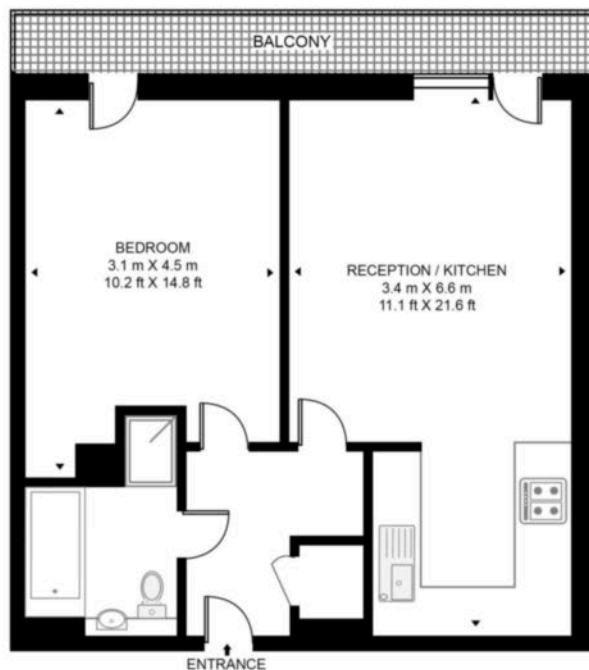


# Floorplan

476 sq ft | 44.2 sq m



**THE SPHERE, E16**  
APPROXIMATE GROSS INTERNAL FLOOR AREA 476 SQ.FT (44.2 SQ.M)



Whilst every attempt has been made to ensure the accuracy of the floor plan contained here, measurements of door, windows, rooms and any other items are approximate and no responsibility is taken for any error, omission, or mis-statement. The plan for illustrative purposes only and should be used as such by any prospective purchaser. The services, system and appliances shown have not been tested and no guarantee as to their operability or efficiency can be given.

## Docklands

St David's Square, 320 Westferry Road, London, E14 3QL

## Lettings

020 7510 8444 | [docklands.lettings@chaseevans.co.uk](mailto:docklands.lettings@chaseevans.co.uk)

## We're here to help.

IMPORTANT NOTICE - These particulars have been prepared in good faith and they are not intended to constitute part of an offer or contract. We have not performed a structural survey on this property and the services, appliances and specific fittings have not been tested. All photographs, measurements, floor plans and distances referred to are given as a guide and should not be relied upon.

[chaseevans.com](http://chaseevans.com)

 Chase Evans