



Kingfisher Heights, Bramwell Way, Royal Docks, E16

Price **£410 per week** | Furnished



Kingfisher Heights, Bramwell Way, Royal Docks, E16



1 Bedroom



1 Bathroom



1 Reception



Balcony



Gymnasium



Local Amenities



24-Hour Concierge



0.1 MI Pontoon Dock

A modern one bedroom apartment benefiting from an open-plan living room, fully integrated German kitchen, family bathroom, high quality furniture and private balcony overlooking the courtyard gardens. The property features full height glazing, wood flooring and recessed lighting throughout.

Situated close to the banks of the Thames and adjacent to the green Thames Barrier Park offering ideal spaces for quiet retreat or leisure activities. Waterside Park offers residents concierge, access to private gymnasium and excellent transport links

from Pontoon Dock DLR, with London City Airport just one stop away, while Canary Wharf, the City and central London are within easy reach.



Local Authority:

Newham London

Council Tax Band:

C

EPC:

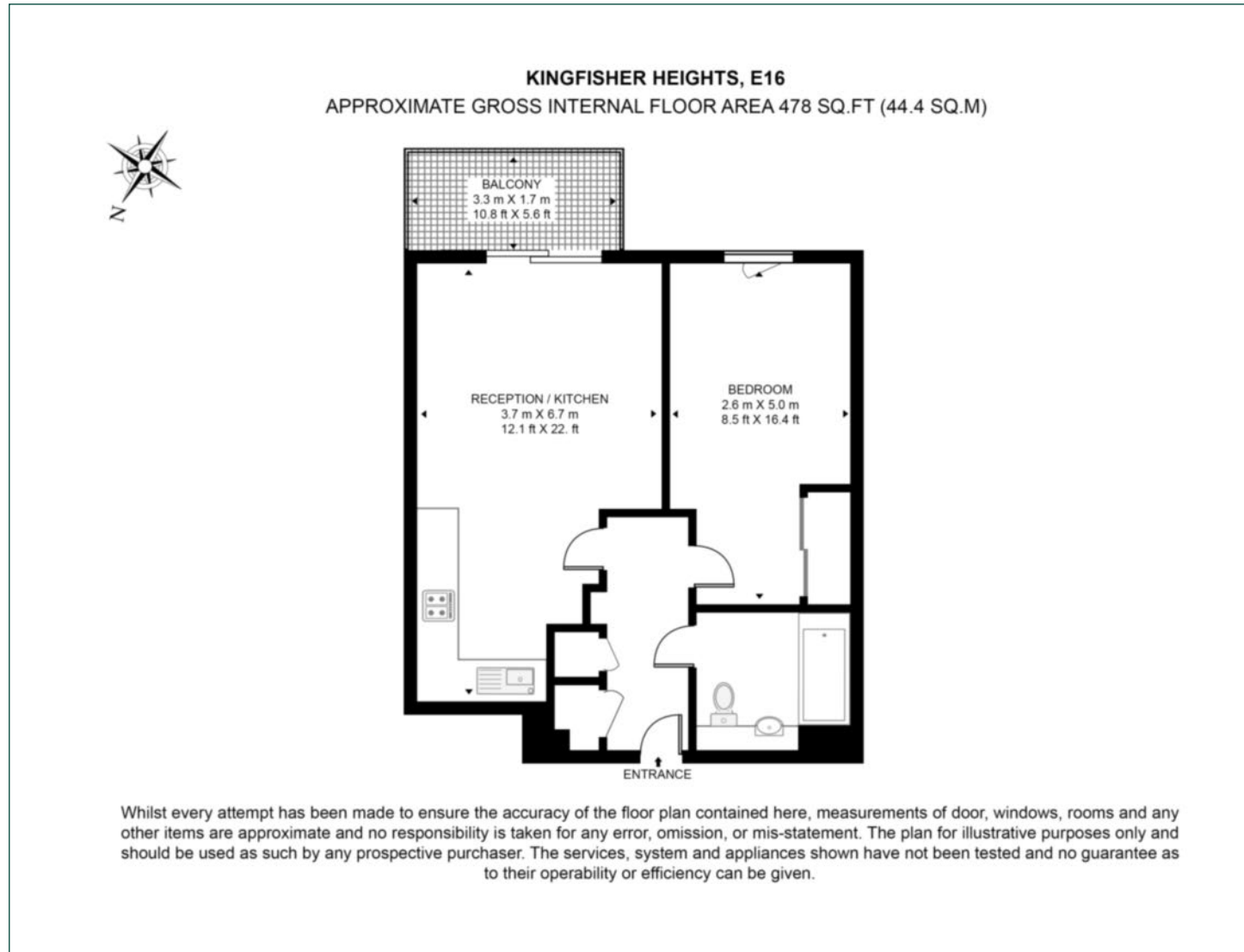
B

Security deposit:

equivalent to 5 weeks' rent

Floorplan

478 sq ft | 44.4 sq m



Docklands

St David's Square, 320 Westferry Road, London, E14 3QL

Lettings

020 7510 8445 | docklands.lettings@chaseevans.co.uk

We're here to help.

IMPORTANT NOTICE - These particulars have been prepared in good faith and they are not intended to constitute part of an offer or contract. We have not performed a structural survey on this property and the services, appliances and specific fittings have not been tested. All photographs, measurements, floor plans and distances referred to are given as a guide and should not be relied upon.

chaseevans.com