



## Clubhouse Apartments, Stainsby Road, Poplar, E14

Asking price **£375,000** | Leasehold



# Clubhouse Apartments, Stainsby Road, Poplar, E14



1 Bedroom



1 Bathroom



1 Reception



Balcony



Local Amenities



Nearby Parks



0.5 MI Westferry

A beautifully presented one bedroom, one bathroom apartment adjacent to Bartlett Park in Poplar. This light and bright apartment benefits from a private balcony with views towards the City and the Shard. Also featuring open plan living space with an immaculate fully fitted Smeg kitchen, wood flooring, floor to ceiling glazing leading to a balcony, modern bathroom and double bedroom with built-in wardrobes. Ample hallway storage.

Clubhouse Apartments is conveniently placed for the City and Canary Wharf, the property is situated

along the Limehouse Cut and close to the open space of Bartlett Park and is within easy reach of a number of amenities including shops, supermarkets and Canary Wharf, as well as DLR stations. Both Langdon Park and West ferry DLR stations are approximately 10 minutes away, which allows for quick access to Canary Wharf, Stratford City Airport and Bank.

**Tenure:** Leasehold (239 years remaining) **Local Authority:** Tower Hamlets

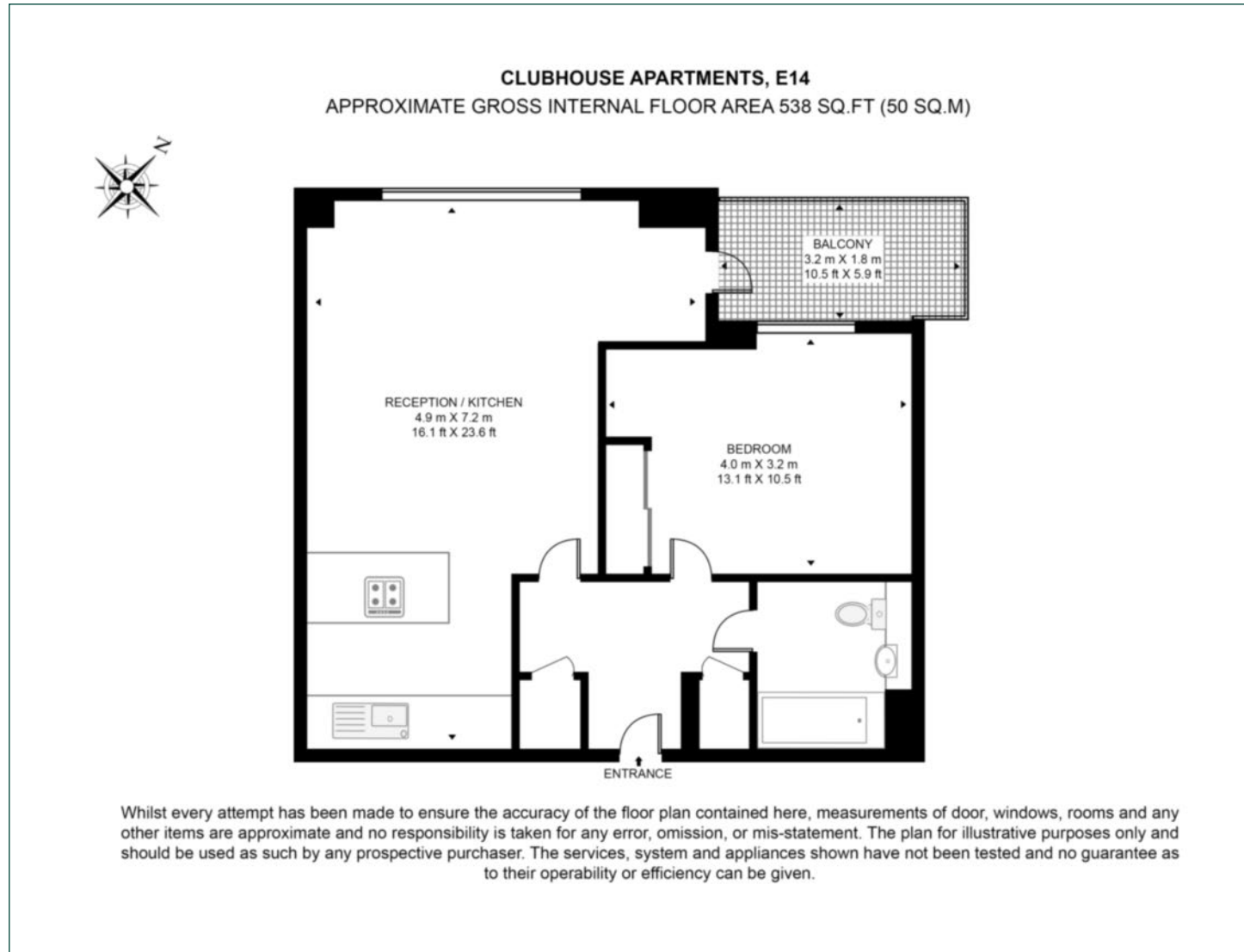
**Ground Rent:** £300 p.a. **Council Tax Band:** C

**Service Charge:** £2,690 p.a. **EPC:** B



# Floorplan

538 sq ft | 50 sq m



## Docklands

St David's Square, 320 Westferry Road, London, E14 3QL

## Sales

020 7510 8445 | [docklands.sales@chaseevans.co.uk](mailto:docklands.sales@chaseevans.co.uk)

## We're here to help.

IMPORTANT NOTICE - These particulars have been prepared in good faith and they are not intended to constitute part of an offer or contract. We have not performed a structural survey on this property and the services, appliances and specific fittings have not been tested. All photographs, measurements, floor plans and distances referred to are given as a guide and should not be relied upon.

[chaseevans.com](http://chaseevans.com)

 Chase Evans