

Boatyard Apartments, Ferry Street, Isle Of Dogs E14

Price **£575 per week** | Furnished



Boatyard Apartments, Ferry Street, Isle Of Dogs E14



2 Bedrooms



2 Bathrooms



1 Reception



Parking



Terrace



Local Amenities



0.2 MI Island Gardens

Spacious two bedroom, two bathroom riverside apartment with parking and terrace set on the 3rd floor of this secure gated development on Ferry Street within close proximity of Canary Wharf. This stunning property consists of an open plan living area, private terrace with river views, fitted kitchen with high-spec appliances, two sizable bedrooms with fitted wardrobes, master ensuite and second private rear balcony.

Residents benefit from secure private parking. The DLR connections of Island Gardens and Mudchute are nearby and the apartment is also within the

catchment area for Canary Wharf College. Ideally located close to the River Taxi and the Greenwich Foot Tunnel. Moments away from the green spaces of Mudchute Park and Farm.

Local Authority:

Tower Hamlets

Council Tax Band:

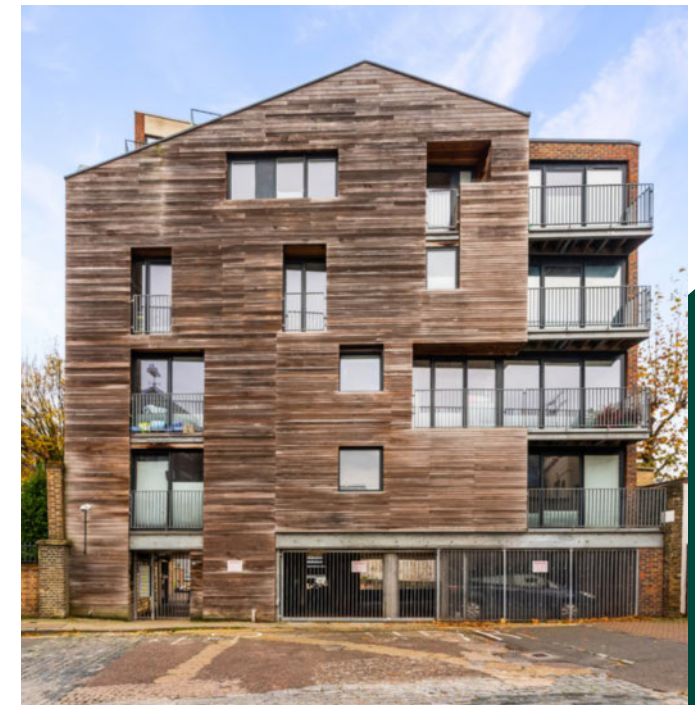
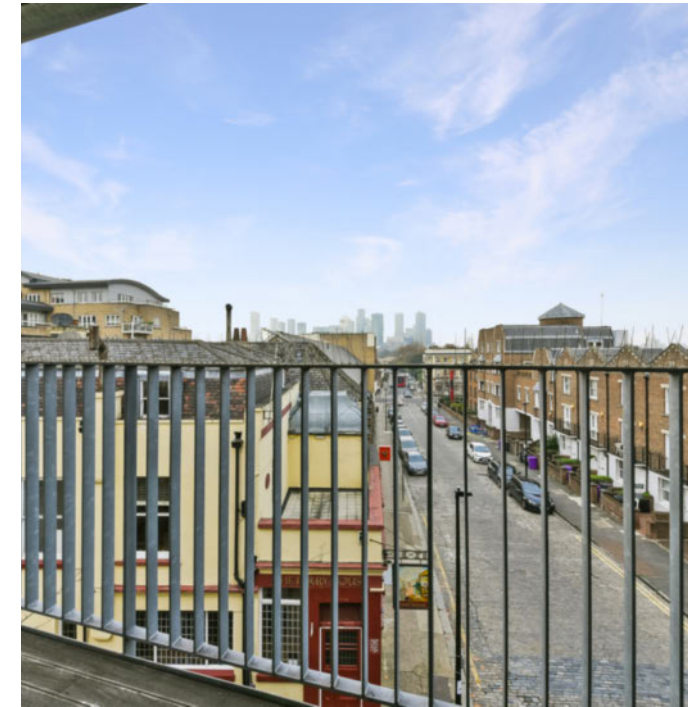
D

EPC:

B

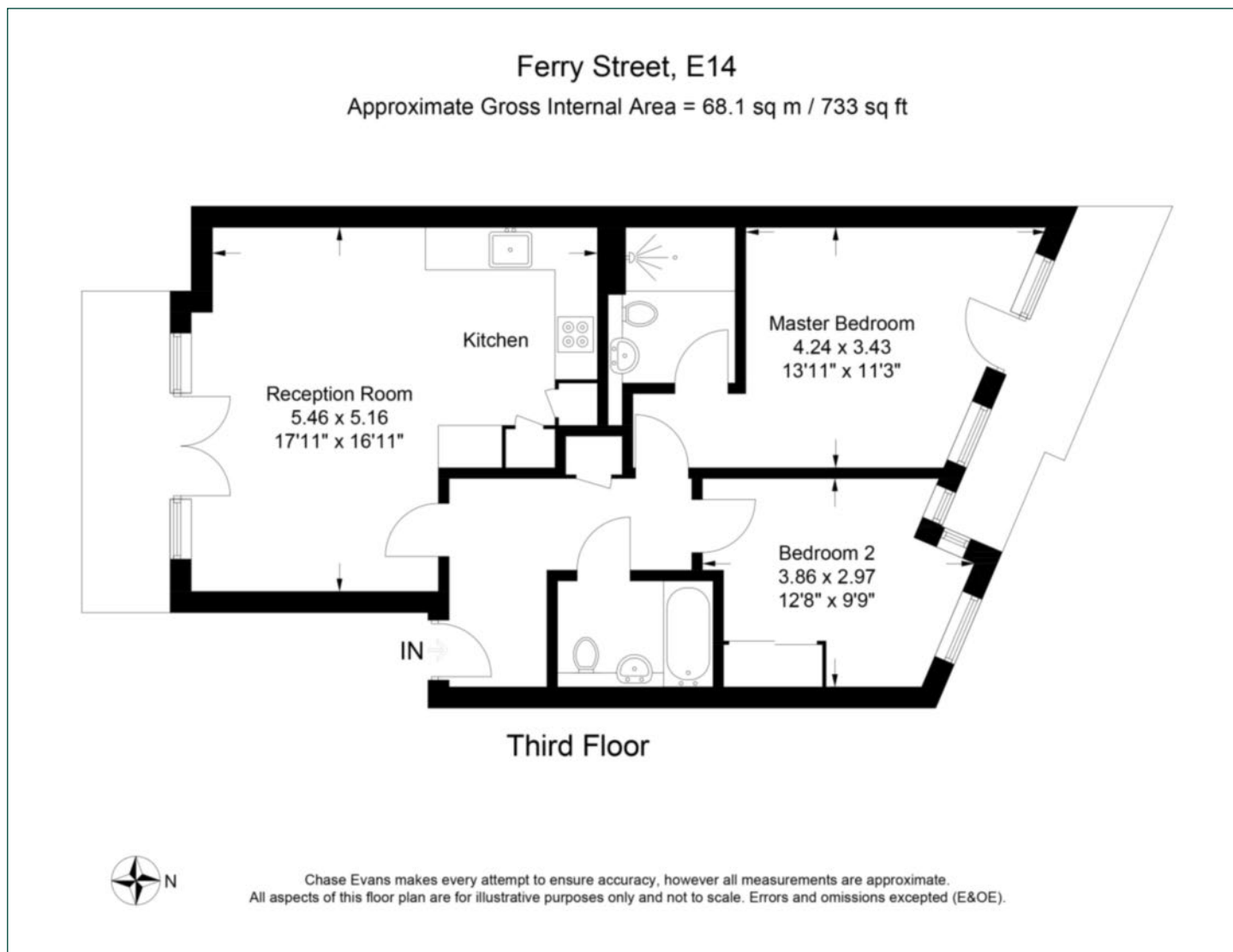
Security deposit:

equivalent to 5 weeks' rent



Floorplan

733 sq ft | 68.1 sq m



Docklands

St David's Square, 320 Westferry Road, London, E14 3QL

Lettings

020 7510 8444 | docklands.lettings@chaseevans.co.uk

We're here to help.

IMPORTANT NOTICE - These particulars have been prepared in good faith and they are not intended to constitute part of an offer or contract. We have not performed a structural survey on this property and the services, appliances and specific fittings have not been tested. All photographs, measurements, floor plans and distances referred to are given as a guide and should not be relied upon.

chaseevans.com

Chase Evans