



## St David's Square, Isle of Dogs, E14

Asking price **£750,000** | Leasehold



# St David's Square, Isle of Dogs, E14



3 Bedrooms



2 Bathrooms



2 Receptions



Balcony



Terrace



Gym



Pool



Parking



0.3 MI Island  
Gardens Station

A spacious three bedroom, two bathroom riverside apartment in this sought-after development St Davids Square, E14. Comprises a bright living room with direct views of the Thames, a separate, fully integrated galley kitchen, three double bedrooms served by a full size bathroom, large private terrace and a balcony. St David's Square is a gated development with an on site gym, swimming pool, landscaped gardens and 24-hour concierge services.

Nearby the development is the Greenwich Foot Tunnel linking the location with rich maritime heritage along the south bank of the Thames. The property is located only 0.3 miles from Island Gardens station with DLR connections between Canary Wharf and Greenwich.

**Tenure:** Leasehold (974 years remaining)

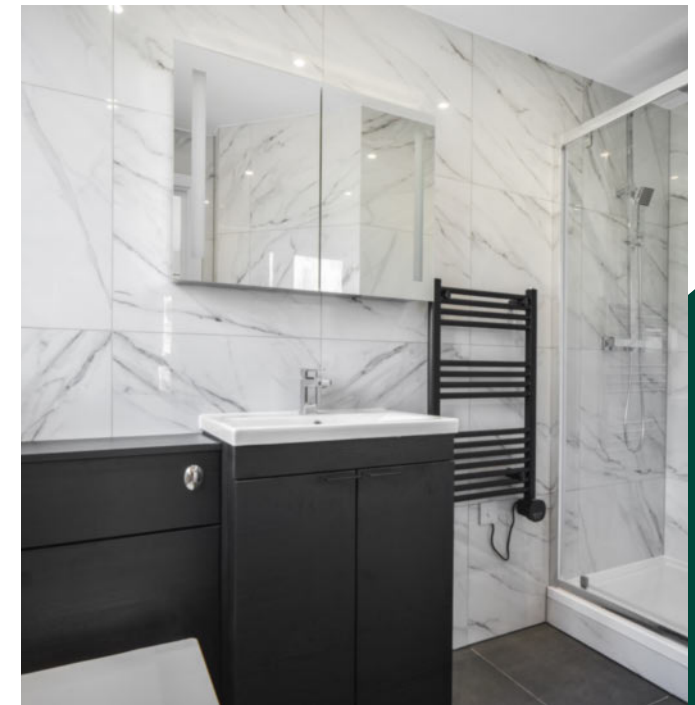
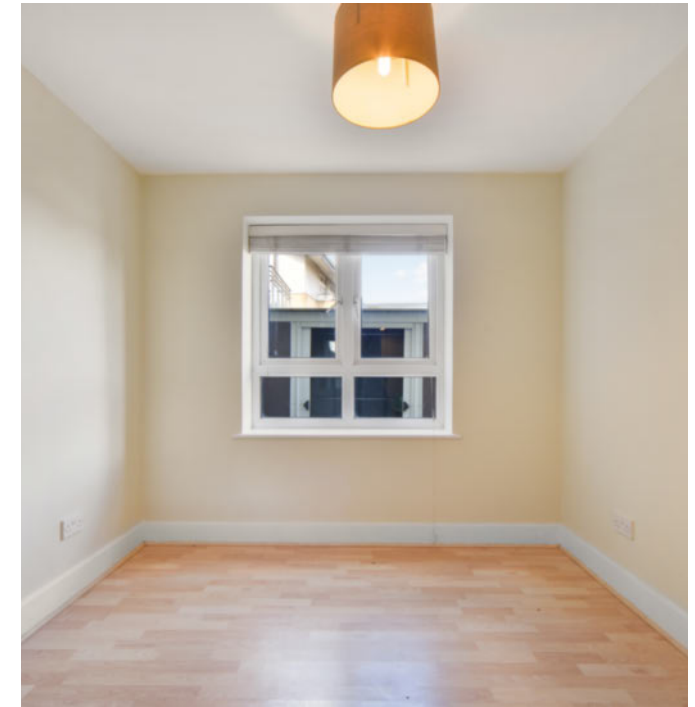
**Local Authority:** Tower Hamlets

**Ground Rent:** £400 p.a.

**Council Tax Band:** G

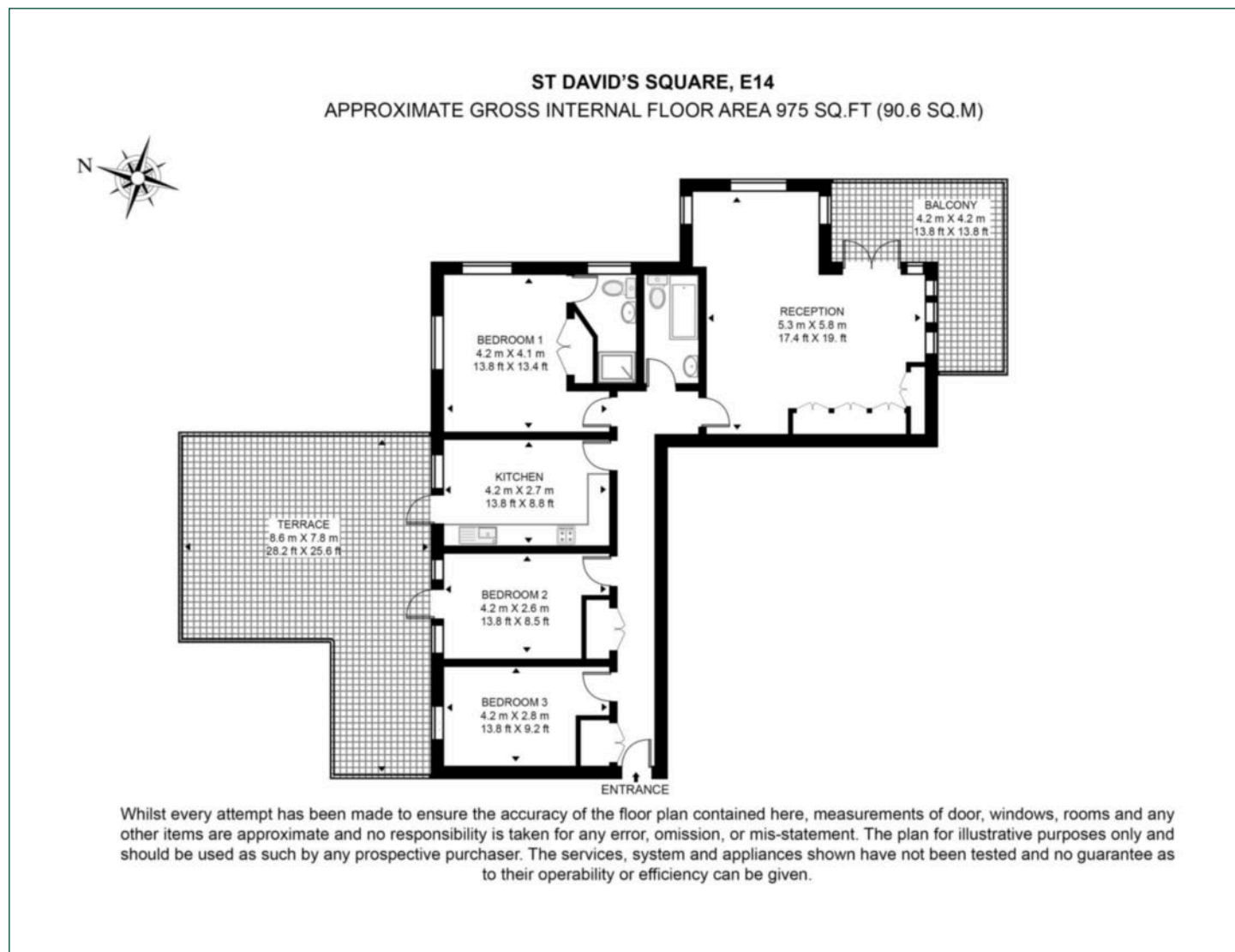
**Service Charge:** £6,100 p.a.

**EPC:** C



# Floorplan

975 sq ft | 90.6 sq m



## Docklands

St David's Square, 320 Westferry Road, London, E14 3QL

## Sales

020 7510 8445 | [docklands.sales@chaseevans.co.uk](mailto:docklands.sales@chaseevans.co.uk)

## We're here to help.

IMPORTANT NOTICE - These particulars have been prepared in good faith and they are not intended to constitute part of an offer or contract. We have not performed a structural survey on this property and the services, appliances and specific fittings have not been tested. All photographs, measurements, floor plans and distances referred to are given as a guide and should not be relied upon.

[chaseevans.com](http://chaseevans.com)

 Chase Evans