



## St Davids Square, Isle of Dogs E14

Price **£525 per week** | Furnished



# St Davids Square, Isle of Dogs E14



2 Bedrooms



1 Bathroom



1 Reception



Balcony



Parking



Gymnasium



Local Amenities



24-Hour Concierge



0.3 MI Mudchute

An immaculate contemporary, fully renovated two bedroom apartment set within the highly desirable St David's Square gated and secure riverside development. Situated in such a beautiful quiet location on the southern tip of the Isle of Dogs peninsula, on the Thames riverside, it is in close proximity to Canary Wharf and the city.

This property will be equally perfect for professionals or a young family. Well presented and planned, the apartment comprises an open-plan living room leading onto a private balcony, a modern and fully integrated kitchen, two bedrooms and a family bathroom with a walk-in shower.

The property features wood flooring throughout, contemporary tiling, and smart bathroom ware. There is

also recessed lighting and excellent wardrobe and storage space throughout.

St David's Square residents have access to 24-hour concierge service and health and leisure facilities including gym, swimming pool, jacuzzi, sauna and snooker/pool lounge. The Thames, Island Gardens and Mudchute DLR stations and the Greenwich Foot Tunnel are located within a short distance from the development, the area also has excellent schools.

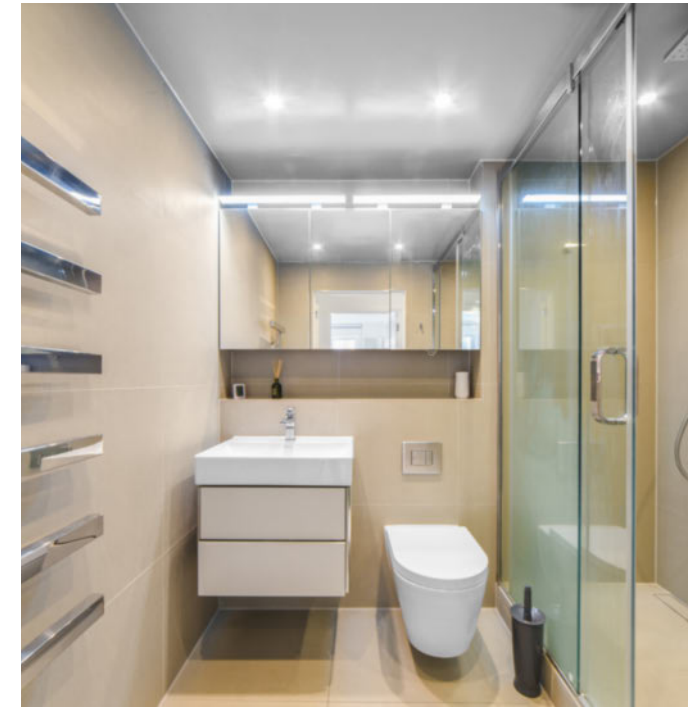
Local amenities are found along Westferry Road and Manchester Road. Canary Wharf and Crossrail Place are 5-6 DLR stops away.

**Local Authority:** Tower Hamlets

**Council Tax Band:** D

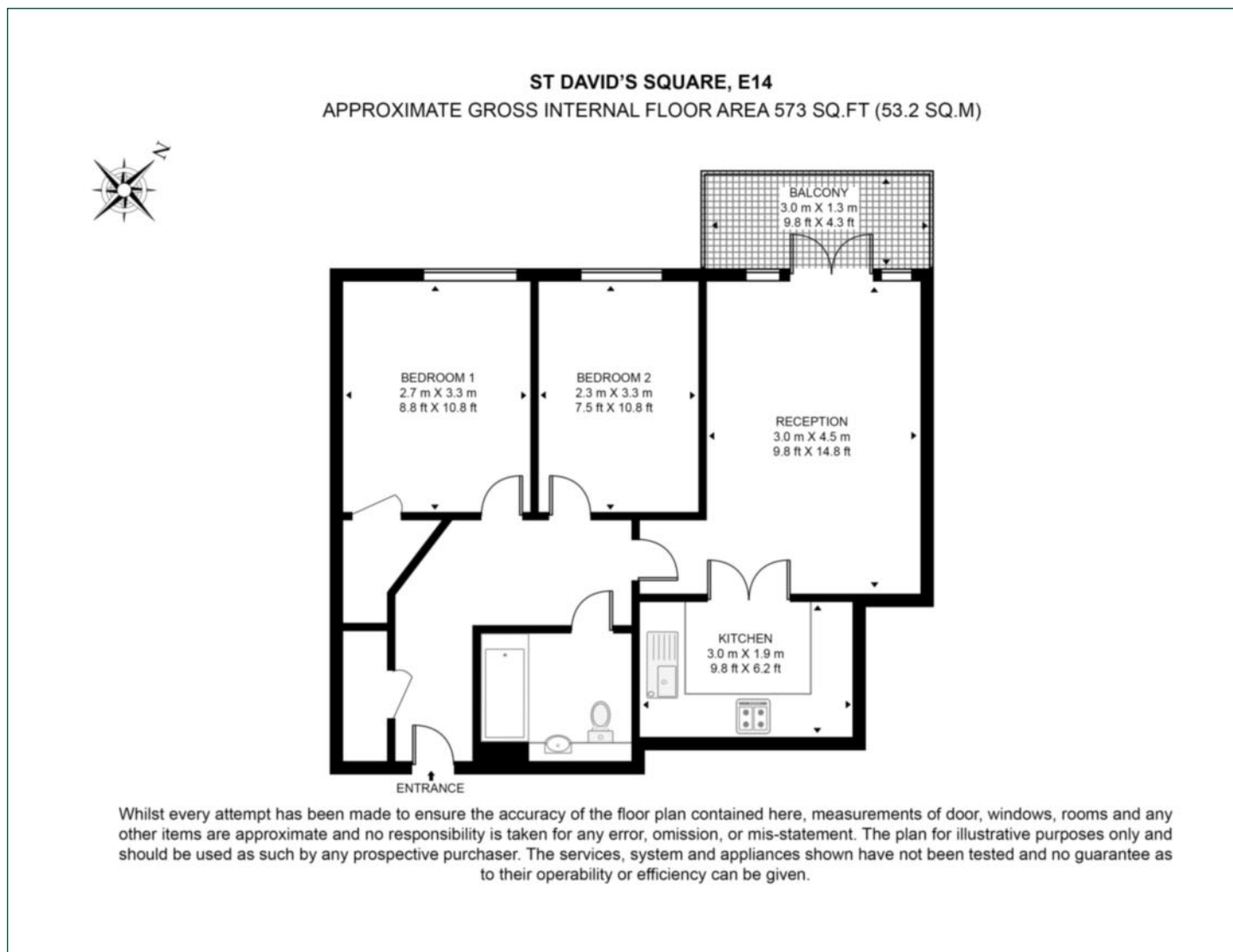
**EPC:** B

**Security deposit:** equivalent to 5 weeks' rent



# Floorplan

573 sq ft | 53.2 sq m



## Docklands

St David's Square, 320 Westferry Road, London, E14 3QL

## Lettings

020 7510 8445 | [docklands.lettings@chaseevans.co.uk](mailto:docklands.lettings@chaseevans.co.uk)

## We're here to help.

IMPORTANT NOTICE - These particulars have been prepared in good faith and they are not intended to constitute part of an offer or contract. We have not performed a structural survey on this property and the services, appliances and specific fittings have not been tested. All photographs, measurements, floor plans and distances referred to are given as a guide and should not be relied upon.

[chaseevans.com](http://chaseevans.com)

 Chase Evans