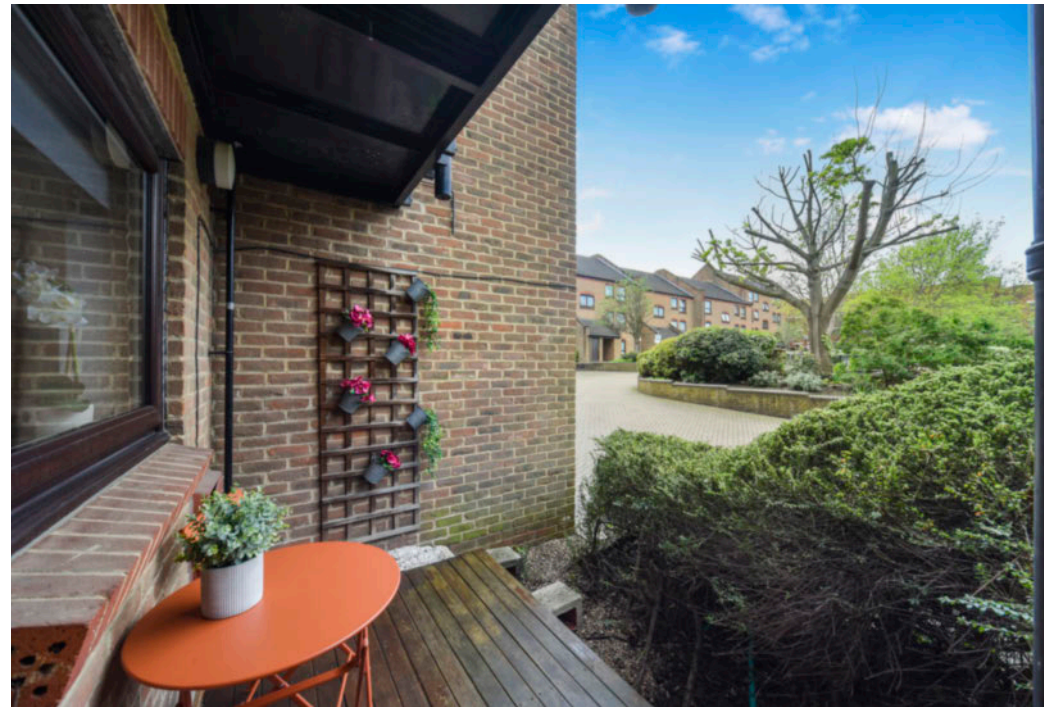


## Horseshoe Close, Ferry Street, Isle of Dogs, E14

Price **£438 per week** | Furnished



# Horseshoe Close, Ferry Street, Isle of Dogs, E14



2 Bedrooms



1 Bathroom



1 Reception



Patio



Local Amenities



Nearby Green Spaces



0.2 MI Island Gardens

Bright two bedroom apartment set within this gated development in E14. The property comprises spacious living area, separate kitchen with integrated appliances, a private terrace, two sizable bedrooms with fitted wardrobes and modern bathroom suite.

Located in a quiet enclave off Manchester Road, Horseshoe Close is near some of the Isle of Dogs' popular sites including the Island Gardens waterfront with the Greenwich Foot Tunnel, Thames Path and Millwall Park and Farm. Manchester Road offers a good range of daily

amenities including the Old Millwall Fire Station, home to a popular restaurant/cafe.

The nearest station is Island Gardens DLR, a short distance away. Frequent trains run to Canary Wharf (Jubilee Line, DLR and Elizabeth Line), Greenwich and Lewisham. The area is well served by buses 135 (to Canary Wharf, Old Street) and 277 (to Canary Wharf, Mile End, Hackney).

**Local Authority:**

Tower Hamlets

**Council Tax Band:**

D

**EPC:**

C

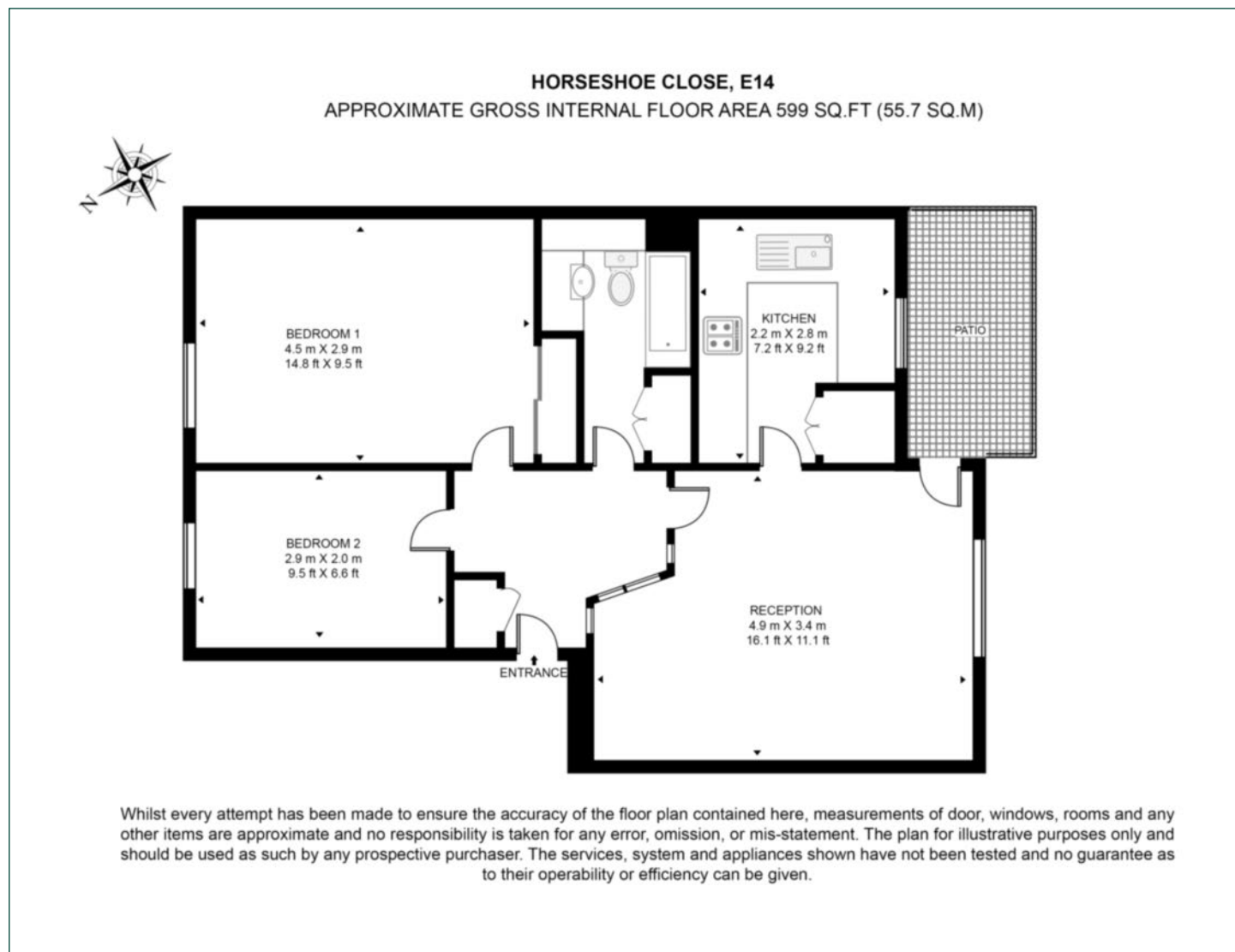
**Security deposit:**

equivalent to 5 weeks' rent



# Floorplan

599 sq ft | 55.7 sq m



## Docklands

St David's Square, 320 Westferry Road, London, E14 3QL

## Lettings

020 7510 8444 | [docklands.lettings@chaseevans.co.uk](mailto:docklands.lettings@chaseevans.co.uk)

## We're here to help.

IMPORTANT NOTICE - These particulars have been prepared in good faith and they are not intended to constitute part of an offer or contract. We have not performed a structural survey on this property and the services, appliances and specific fittings have not been tested. All photographs, measurements, floor plans and distances referred to are given as a guide and should not be relied upon.

[chaseevans.com](http://chaseevans.com)

 Chase Evans