



Da Gama Place, Maritime Quay, Isle Of Dogs, E14

Price **£900 per week** | Furnished



Da Gama Place, Maritime Quay, Isle Of Dogs, E14



4 Bedrooms



3 Bathrooms



1 Reception



Private Garden



Parking



0.5 MI Mudchute

A spacious, contemporary four bedroom, three bathroom terraced house arranged over three floors with private parking at the front and a patio garden at the rear, located in Isle of Dogs E14. On the ground floor, there are a spacious living room, open plan with a large modern kitchen/ dining room which extends out onto the patio, a bedroom and a bathroom with a shower. Two bedrooms and a family bathroom occupy the first floor, and the master bedroom with a large smart bathroom suite is configured on the second floor.

quiet side street, the property is close to the Thames as well as the Mudchute DLR station which is around a 10 minute walk with access from there to Canary Wharf and it's many amenities in under 10 minutes.

Located at the southern tip of the Isle of Dogs, on a

Local Authority: Tower Hamlets

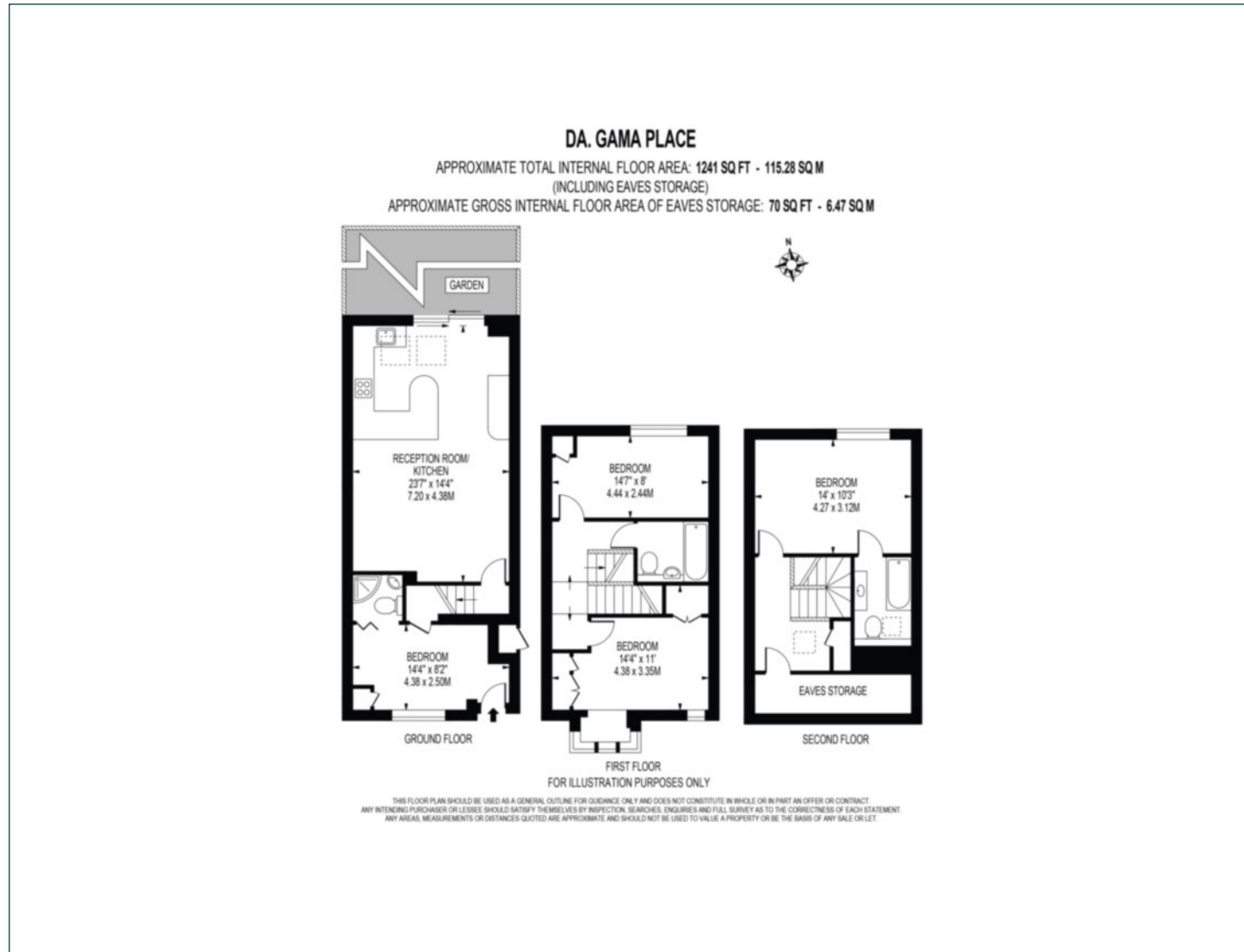
Council Tax Band: E

EPC: C

Security deposit: equivalent to 5 weeks' rent

Floorplan

1,241 sq ft | 115.28 sq m



Docklands

St David's Square, 320 Westferry Road, London, E14 3QL

Lettings

020 7510 8444 | docklands.lettings@chaseevans.co.uk

We're here to help.

IMPORTANT NOTICE - These particulars have been prepared in good faith and they are not intended to constitute part of an offer or contract. We have not performed a structural survey on this property and the services, appliances and specific fittings have not been tested. All photographs, measurements, floor plans and distances referred to are given as a guide and should not be relied upon.

[chaseevans.com](https://www.chaseevans.com)