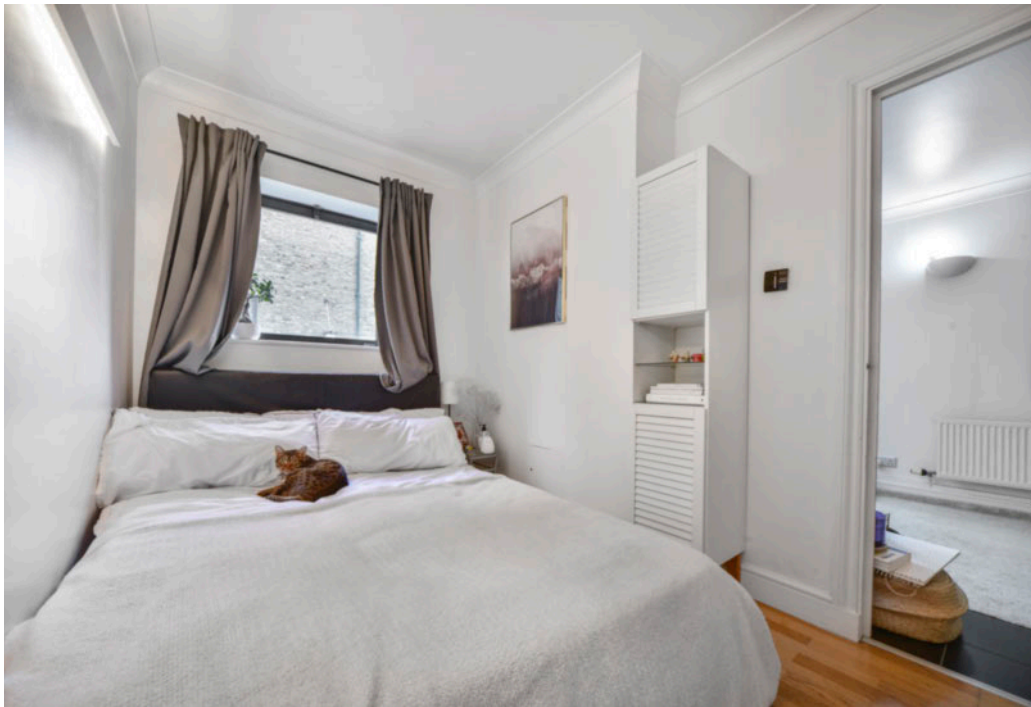




Wheel House, Burrells Wharf Square, Isle of Dogs, E14

OIEO **£300,000** | Share of Freehold



Wheel House, Burrells Wharf Square, Isle of Dogs, E14



1 Bedroom



1 Bathroom



1 Reception



Balcoy



Gymnasium



Local Amenities



24-Hour Concierge



0.3 MI Mudchute

This contemporary one bedroom property is situated in the sought-after Burrells Wharf riverside development on the Isle of Dogs E14. Accommodation spans 428 sq ft and boasts a welcoming living area, a well-equipped kitchen with integrated appliances, floor to ceiling glazing leading to a balcony, tiled flooring, built-in storage in the bedroom, a tiled bathroom.

Residents benefit from allocated parking. The development also provides access to a 24-hour concierge service, pool and gymnasium. There are amenities located nearby, including restaurants,

pubs and vast green space of Millwall Park. Burrells Wharf Square is located near Island Gardens DLR station, providing a valuable transport link for commutes towards Canary Wharf and the City.

Tenure: Share of Freehold

Local Authority: Tower Hamlets

Ground Rent: £50 p.a.

Council Tax Band: C

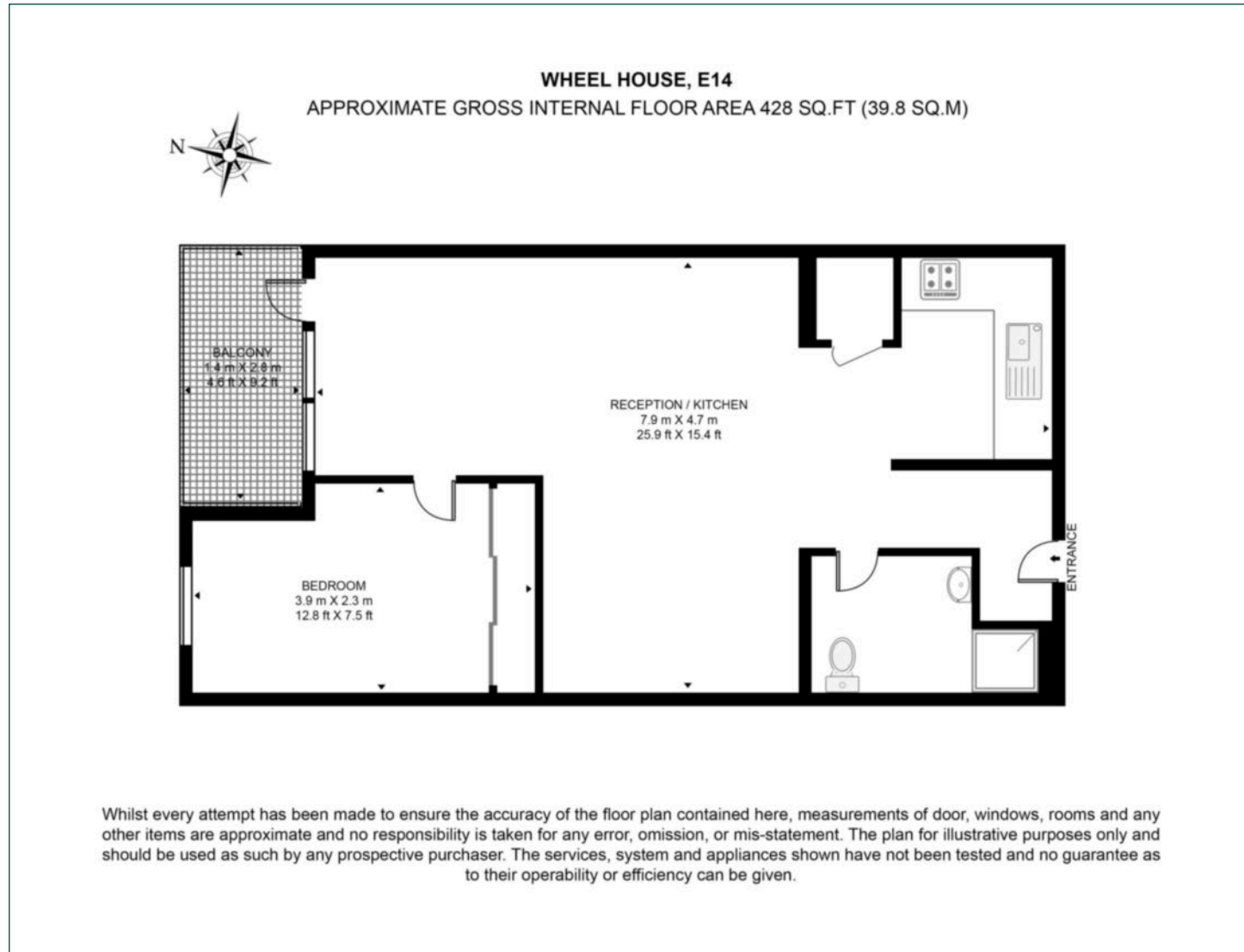
Service Charge: £4,500 p.a.

EPC: C



Floorplan

428 sq ft | 39.8 sq m



Docklands

St David's Square, 320 Westferry Road, London, E14 3QL

Sales

020 7510 8445 | docklands.sales@chaseevans.co.uk

We're here to help.

IMPORTANT NOTICE - These particulars have been prepared in good faith and they are not intended to constitute part of an offer or contract. We have not performed a structural survey on this property and the services, appliances and specific fittings have not been tested. All photographs, measurements, floor plans and distances referred to are given as a guide and should not be relied upon.

chaseevans.com