



## St Davids Square, Isle of Dogs, E14

Asking price **£435,000** | Leasehold



# St Davids Square, Isle of Dogs, E14



2 Bedrooms



1 Bathroom



1 Reception



Private Terrace



24-Hour Concierge



Gym



Pool



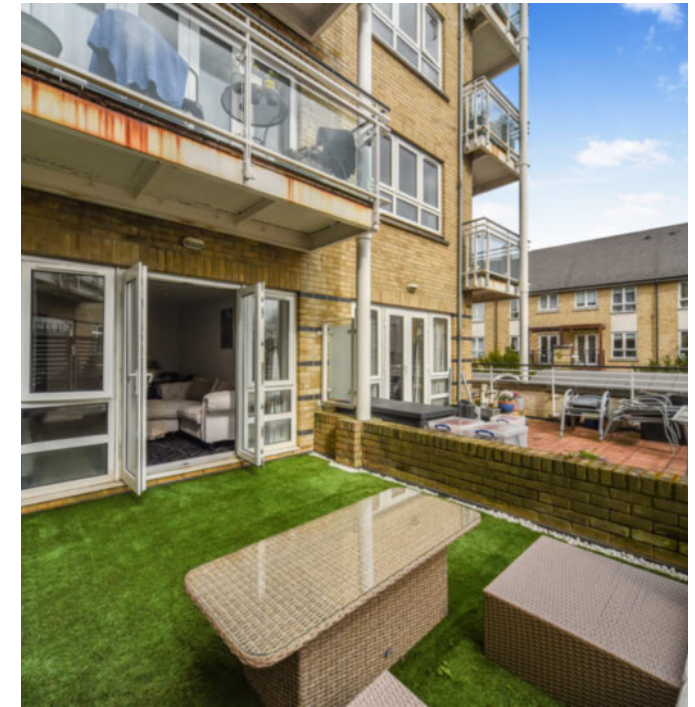
Underground Parking



0.1 MI Island Gardens

This wonderfully bright two bedroom property on the Isle of Dogs is positioned on the first floor of the popular riverside development - St David's Square. Well-presented and planned, the apartment comes with parking and a larger than usual private terrace. Access to all rooms is from the long entrance hall leading to the family bathroom, separate kitchen with integrated appliances, two bedrooms and the reception room which in turn opens out onto the terrace.

Residents have access to 24-hour concierge services and fitness facilities including a swimming pool, jacuzzi, sauna and gymnasium. An excellent range of local amenities including a restaurant and bars can be found at The Old Millwall Fire Station and further along Westferry Road. The apartment is moments from Millwall Park and Island Gardens DLR station (0.1 miles away). St David's Square is conveniently placed for Thames Clipper River bus services and for the Greenwich Foot Tunnel.



**Tenure:** Leasehold (974 years remaining)

**Local Authority:** Tower Hamlets

**Ground Rent:** £300 p.a.

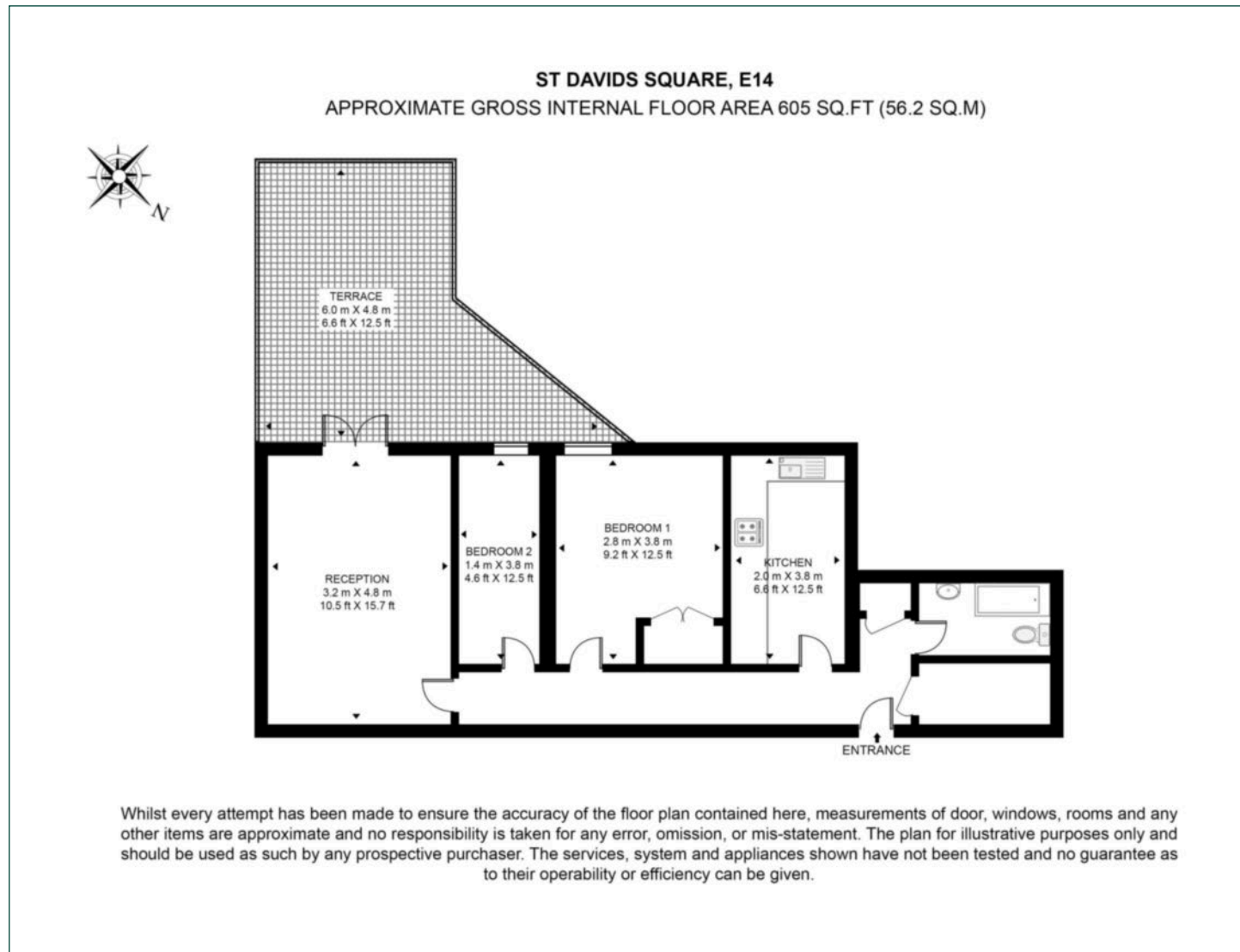
**Council Tax Band:** E

**Service Charge:** £3,900 p.a.

**EPC:**

# Floorplan

605 sq ft | 56.2 sq m



## Docklands

St David's Square, 320 Westferry Road, London, E14 3QL

## Sales

020 7510 8445 | [docklands.sales@chaseevans.co.uk](mailto:docklands.sales@chaseevans.co.uk)

## We're here to help.

IMPORTANT NOTICE - These particulars have been prepared in good faith and they are not intended to constitute part of an offer or contract. We have not performed a structural survey on this property and the services, appliances and specific fittings have not been tested. All photographs, measurements, floor plans and distances referred to are given as a guide and should not be relied upon.

[chaseevans.com](http://chaseevans.com)

 Chase Evans