

Brunel House, Burrells Wharf, Isle Of Dogs, E14

Asking price **£425,000** | Leasehold



Brunel House, Burrells Wharf, Isle Of Dogs, E14



2 Bedrooms



1 Bathroom



1 Reception



Balcony



24-Hour Concierge



Parking



Pool



Gym



0.4 MI Mudchute

A two double bedroom characterful property located in the ever-desirable and historic Burrells Wharf development, E14. Offered to the market in stunning condition, this lovely apartment comprises main entrance with entry phone system, a beautifully kept reception room with a separate modern kitchen, master bedroom, second double bedroom and a refurbished family bathroom. The property comes with allocated parking & is offered chain-free.

Burrell's Wharf Square offers residents excellent facilities which include: 24 hour porterage, gymnasium & swimming pool. Brunel House is located close to the local shops and amenities on Westferry Road as well as the fashionable area of Canary Wharf and the River Thames and proximally to the Mast House Terrace Pier for Thames Clipper services to Westminster & beyond. Only 0.4 miles from Mudchute DLR station.



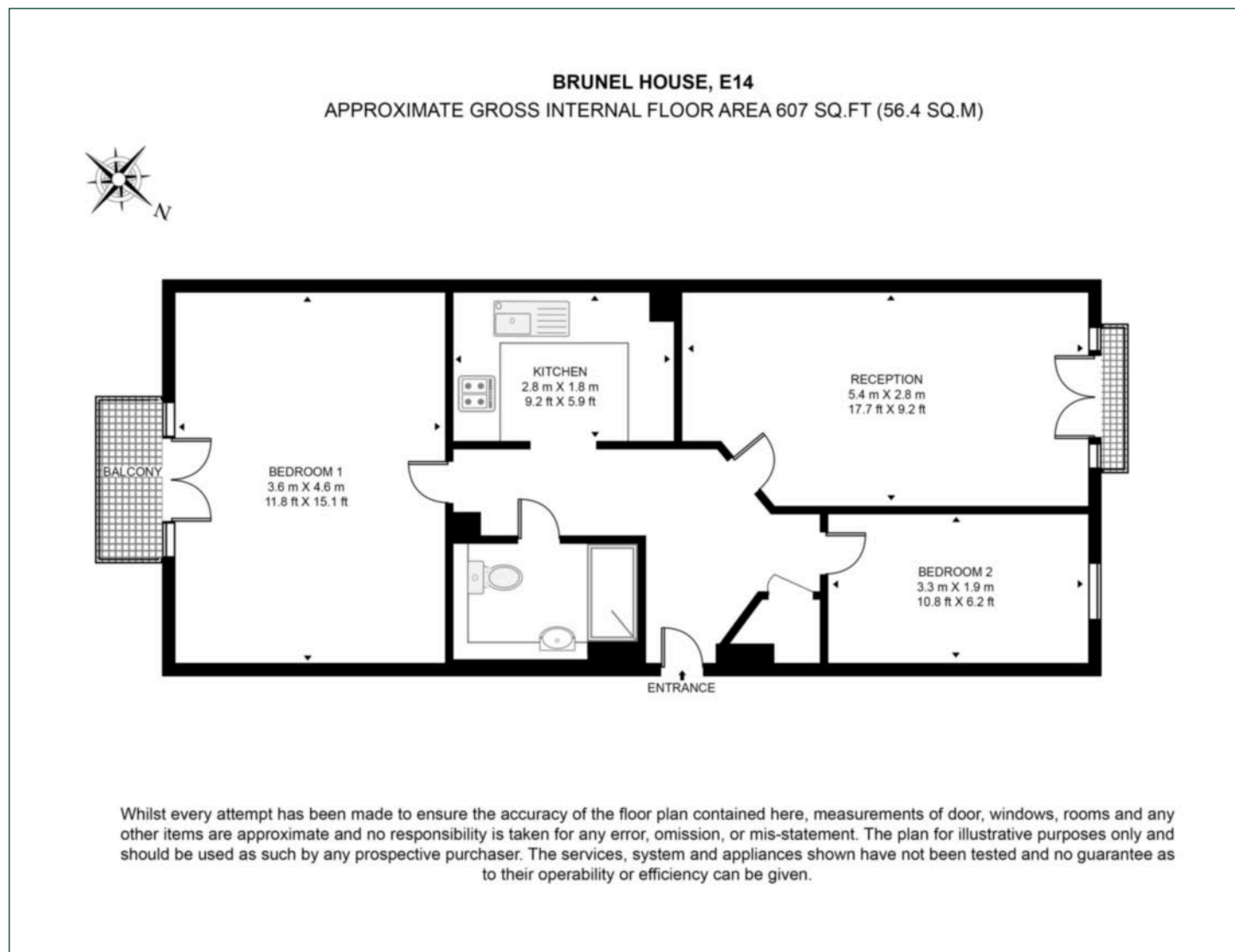
Tenure: Leasehold (89 years remaining) **Local Authority:** Tower Hamlets

Ground Rent: £50 p.a. **Council Tax Band:** E

Service Charge: £4,700 p.a. **EPC:** C

Floorplan

607 sq ft | 56.4 sq m



Docklands

St David's Square, 320 Westferry Road, London, E14 3QL

Sales

020 7510 8445 | docklands.sales@chaseevans.co.uk

We're here to help.

IMPORTANT NOTICE - These particulars have been prepared in good faith and they are not intended to constitute part of an offer or contract. We have not performed a structural survey on this property and the services, appliances and specific fittings have not been tested. All photographs, measurements, floor plans and distances referred to are given as a guide and should not be relied upon.

chaseevans.com

 Chase Evans