

Plate House, Burrells Wharf Square, Isle of Dogs, E14

OIEO **£350,000** | Share of Freehold



Plate House, Burrells Wharf Square, Isle of Dogs, E14



1 Bedroom



1 Bathroom



1 Reception



Allocated Parking Space



Gymnasium



Local Amenities



24-Hour Concierge



0.3 MI Mudchute

Bright and airy one bedroom property set within Plate house, located within the impressive Burrells Wharf development. Accommodation spans 766 sq ft and includes an open plan living room with floor to ceiling glazing proving an abundance of light, large fitted kitchen with integrated appliances, separate dining room, wood flooring, ample sized bedroom, hallway storage and tiled bathroom décor.

Residents benefit from allocated parking. The development also provides access to a 24-hour concierge service, pool and gymnasium. There are

amenities located nearby, including restaurants, pubs and vast green space of Millwall Park. Burrells Wharf Square is located near Island Gardens DLR station, providing a valuable transport link for commutes towards Canary Wharf and the City.

Tenure: Share of Freehold

Local Authority: Tower Hamlets

Ground Rent: £100 p.a.

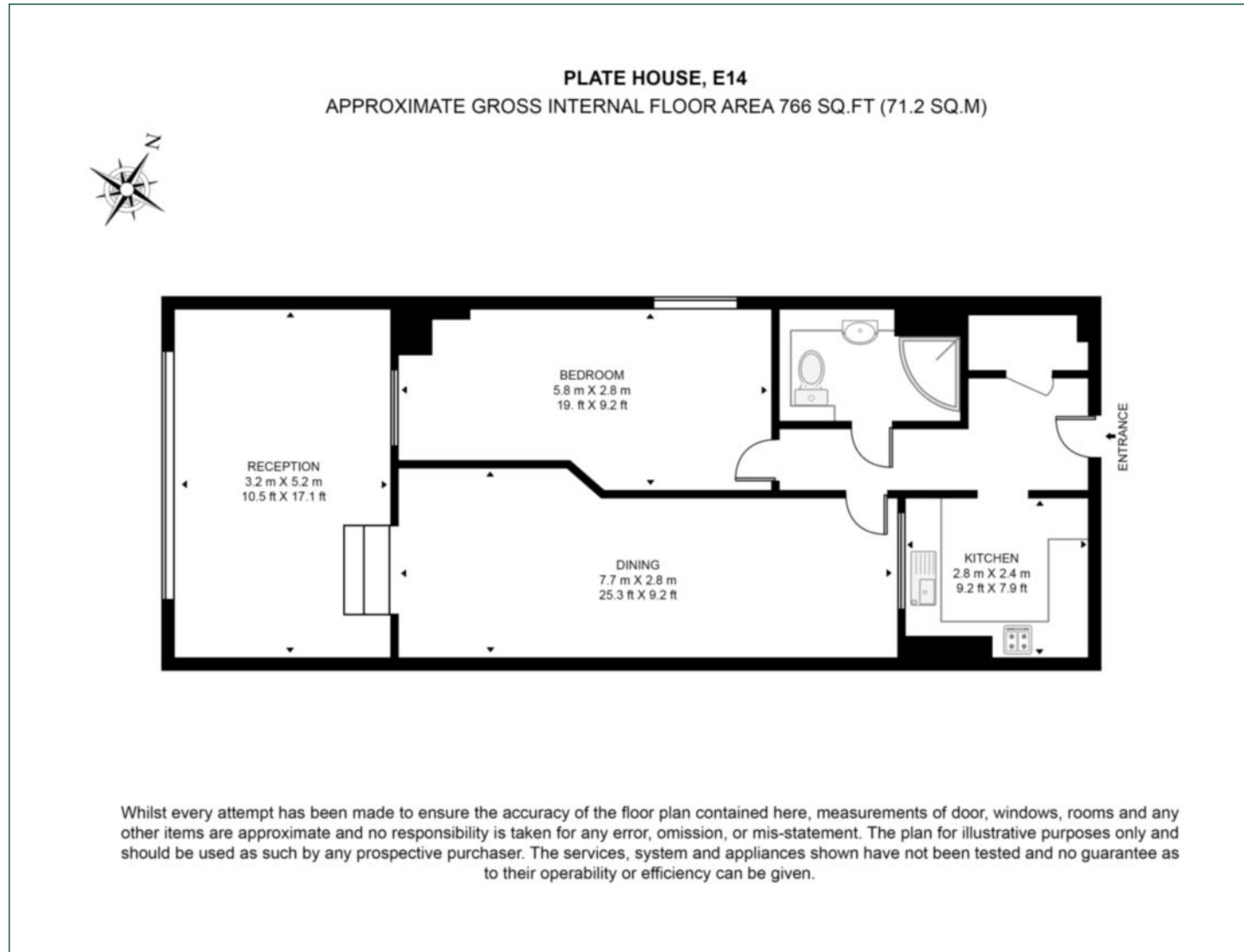
Council Tax Band: E

Service Charge: £6,000 p.a.

EPC: C

Floorplan

766 sq ft | 71.2 sq m



Docklands

St David's Square, 320 Westferry Road, London, E14 3QL

Sales

020 7510 8445 | docklands.sales@chaseevans.co.uk

We're here to help.

IMPORTANT NOTICE - These particulars have been prepared in good faith and they are not intended to constitute part of an offer or contract. We have not performed a structural survey on this property and the services, appliances and specific fittings have not been tested. All photographs, measurements, floor plans and distances referred to are given as a guide and should not be relied upon.

chaseevans.com

 Chase Evans