



St Davids Square, Isle of Dogs, E14

Asking price **£650,000** | Leasehold



St Davids Square, Isle of Dogs, E14



2 Bedrooms



2 Bathrooms



1 Reception



Balcony



Gymnasium



Local Amenities



24-Hour Concierge



0.1 MI Island Gardens

A bright and airy two double bedroom, two bathroom property arranged over two floors set in the ever popular St Davids Square riverside development. The property consists of a generous reception room, separate dining and kitchen, lounge room, floor to ceiling glazing, two double bedrooms including an en-suite to the master, modern family bathroom and a private balcony.

Residents have access to 24-hour concierge services and fitness facilities including a swimming pool, Jacuzzi, sauna and gymnasium. An excellent range of local amenities including a restaurant and

bars could be found at The Old Millwall Fire Station and further along Westferry Road.

The apartment is moments from Millwall Park and Island Gardens (5-min walk away). The nearest station is Island Gardens. St David's Square is conveniently placed for Thames Clipper River bus services and for the Greenwich Foot Tunnel.

Tenure: Leasehold (974 years remaining)

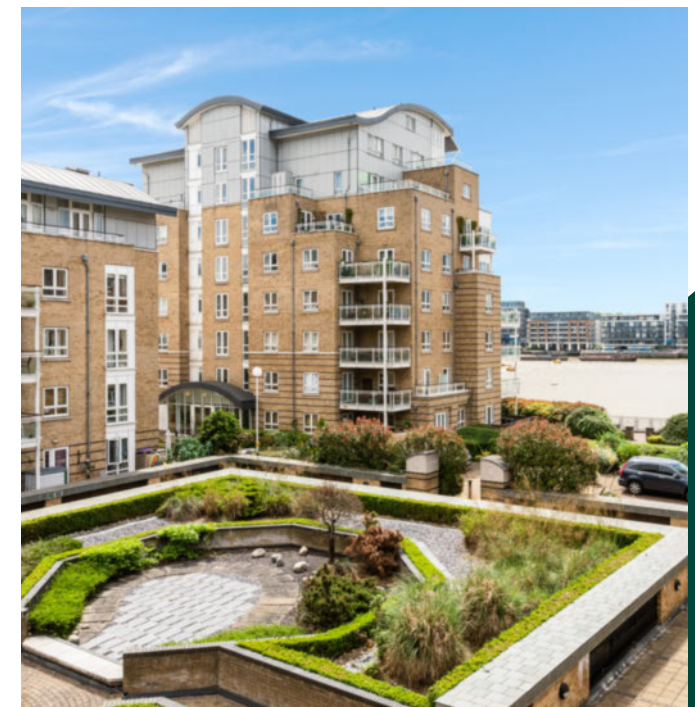
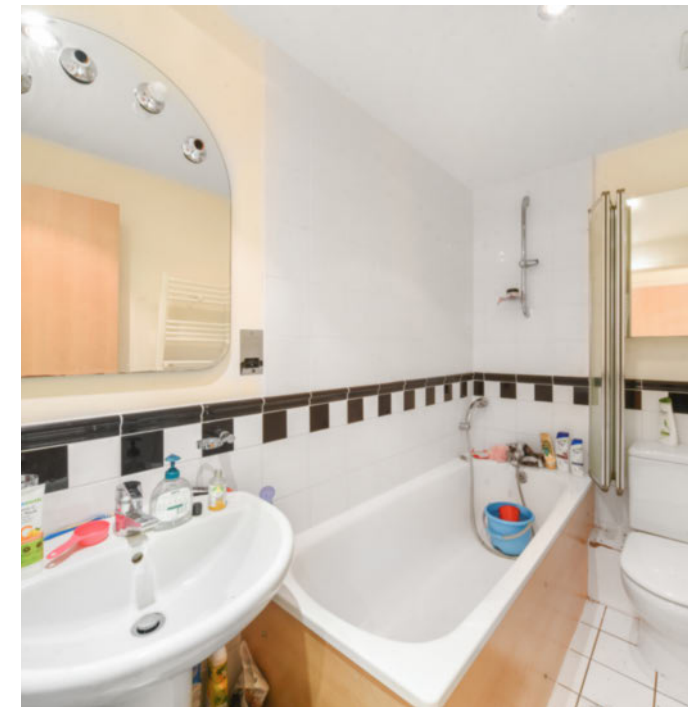
Local Authority: Tower Hamlets

Ground Rent: £150 p.a.

Council Tax Band: F

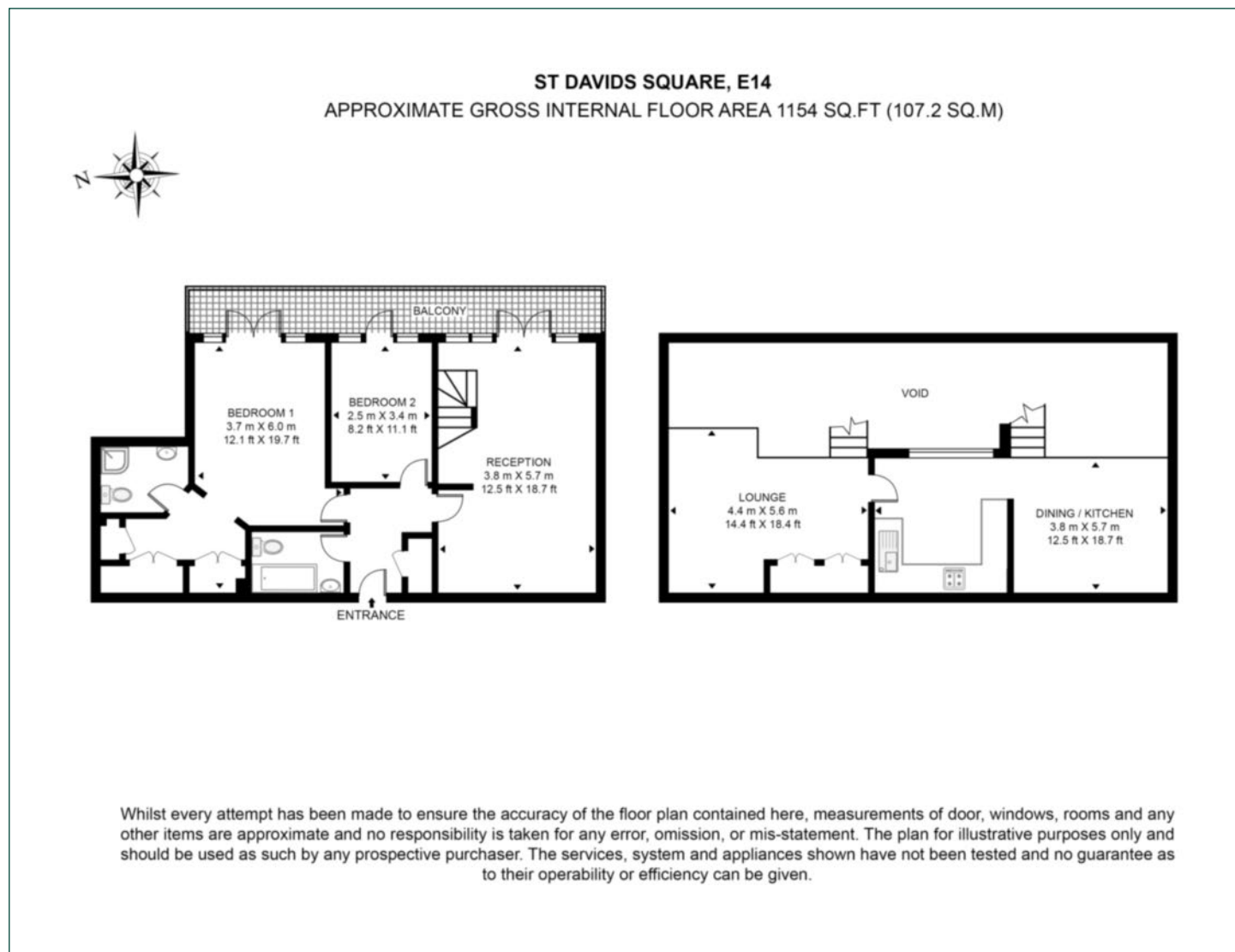
Service Charge: £3,600 p.a.

EPC: E



Floorplan

1,154 sq ft | 107.2 sq m



Docklands

St David's Square, 320 Westferry Road, London, E14 3QL

Sales

020 7510 8445 | docklands.sales@chaseevans.co.uk

We're here to help.

IMPORTANT NOTICE - These particulars have been prepared in good faith and they are not intended to constitute part of an offer or contract. We have not performed a structural survey on this property and the services, appliances and specific fittings have not been tested. All photographs, measurements, floor plans and distances referred to are given as a guide and should not be relied upon.

[chaseevans.com](https://www.chaseevans.com)

 Chase Evans