



## Chart House, Burrells Wharf, Isle Of Dogs, E14

OIEO **£575,000** | Leasehold



# Chart House, Burrells Wharf, Isle Of Dogs, E14



2 Bedrooms



2 Bathrooms



1 Reception



2 Balconies



Gymnasium



Swimming Pool



Local Amenities



24-Hour Concierge



0.3 MI Mudchute

Modern two bedroom, two bathroom apartment within the Burrells Wharf riverside development, Isle of Dogs E14. This apartment includes an inviting living area, fitted kitchen with integrated appliances, fitted bedroom storage, master ensuite, and a further modern bathroom.

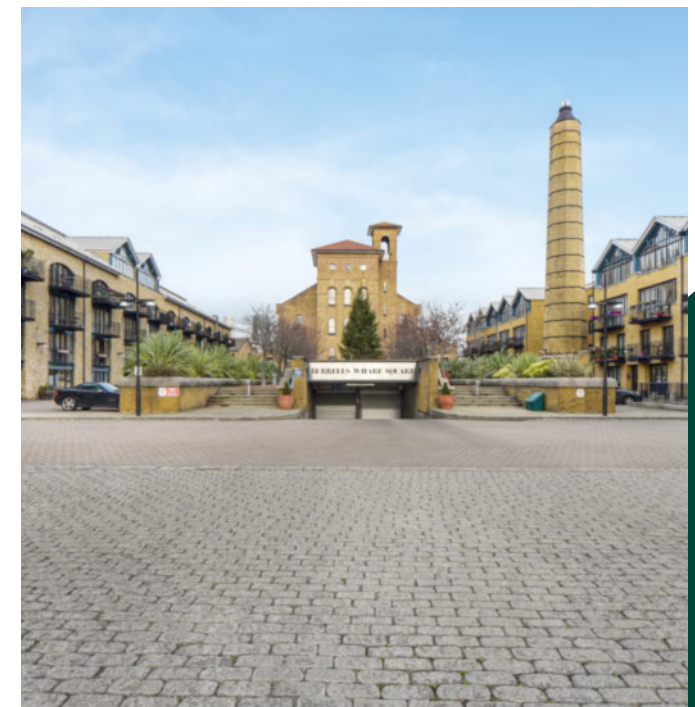
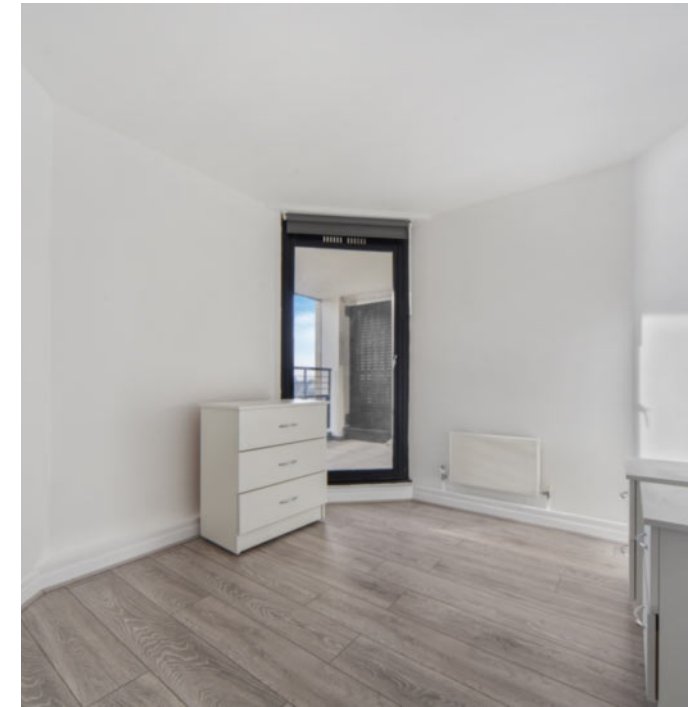
Residents benefit from allocated parking. The development also provides access to a 24-hour concierge service, pool and gymnasium. There are amenities located nearby, including restaurants, pubs and vast green space of Millwall Park. Burrells Wharf Square is located near Island Gardens DLR

station, providing a valuable transport link for commutes towards Canary Wharf and the City.

**Tenure:** Leasehold (964 years remaining) **Local Authority:** Tower Hamlets

**Ground Rent:** Approx. £10 p.a. **Council Tax Band:** F

**Service Charge:** Approx. £7,500 p.a. **EPC:** C

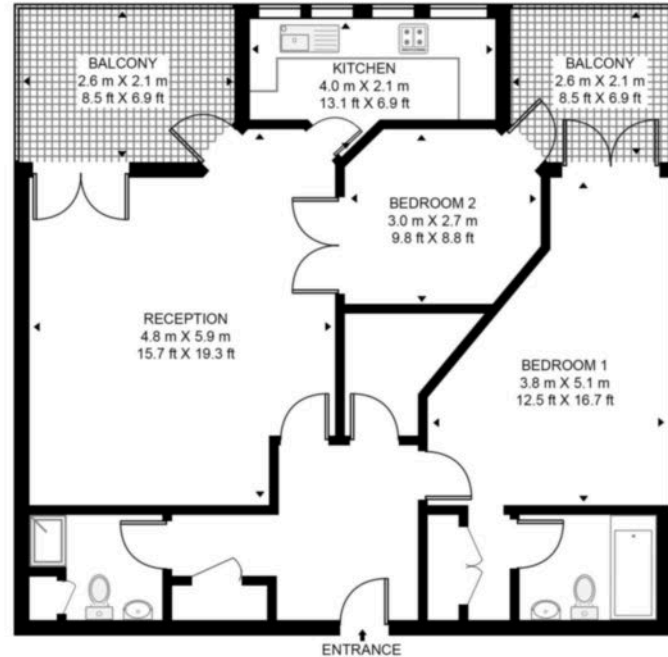


# Floorplan

868 sq ft | 80.70 sq m



**CHART HOUSE E14**  
APPROXIMATE GROSS INTERNAL FLOOR AREA 868 SQ.FT (80.7 SQ.M)



Whilst every attempt has been made to ensure the accuracy of the floor plan contained here, measurements of door, windows, rooms and any other items are approximate and no responsibility is taken for any error, omission, or mis-statement. The plan for illustrative purposes only and should be used as such by any prospective purchaser. The services, system and appliances shown have not been tested and no guarantee as to their operability or efficiency can be given.

## Docklands

St David's Square, 320 Westferry Road, London, E14 3QL

## Sales

020 7510 8445 | [docklands.sales@chaseevans.co.uk](mailto:docklands.sales@chaseevans.co.uk)

## We're here to help.

IMPORTANT NOTICE - These particulars have been prepared in good faith and they are not intended to constitute part of an offer or contract. We have not performed a structural survey on this property and the services, appliances and specific fittings have not been tested. All photographs, measurements, floor plans and distances referred to are given as a guide and should not be relied upon.

[chaseevans.com](http://chaseevans.com)