



Perry Court, Maritime Quay, Docklands, E14

Guide price **£425,000** | Leasehold



Perry Court, Maritime Quay, Docklands, E14



2 Bedrooms



2 Bathrooms



1 Reception



Balcony



River Views



Local Amenities



0.4 MI Mudchute

Bright and airy two bedroom, two bathroom property set within Perry Court, located within this sought after riverside development Maritime Quay.

Accommodation spans 735 sq ft and includes an large living room with full height windows providing abundant natural light leading to a generous private balcony with views over the river Thames, separate fitted kitchen with integrated appliances, high ceilings, two ample bedrooms, master with fitted bedroom space, en suite and access to the balcony, tiled bathroom décor.

Maritime Quay is adjacent to the River Thames and is within walking distance of Mudchute DLR, Mudchute Park, the Greenwich Foot Tunnel and the Napier Avenue river bus stop, Thames clipper, DLR stations and local amenities. Nearby Masthouse Pier provides fast river journeys to Greenwich, Canary Wharf and Westminster. Easy access to Canary Wharf amenities.

Tenure: Leasehold (100 years remaining) **Local Authority:** Tower Hamlets

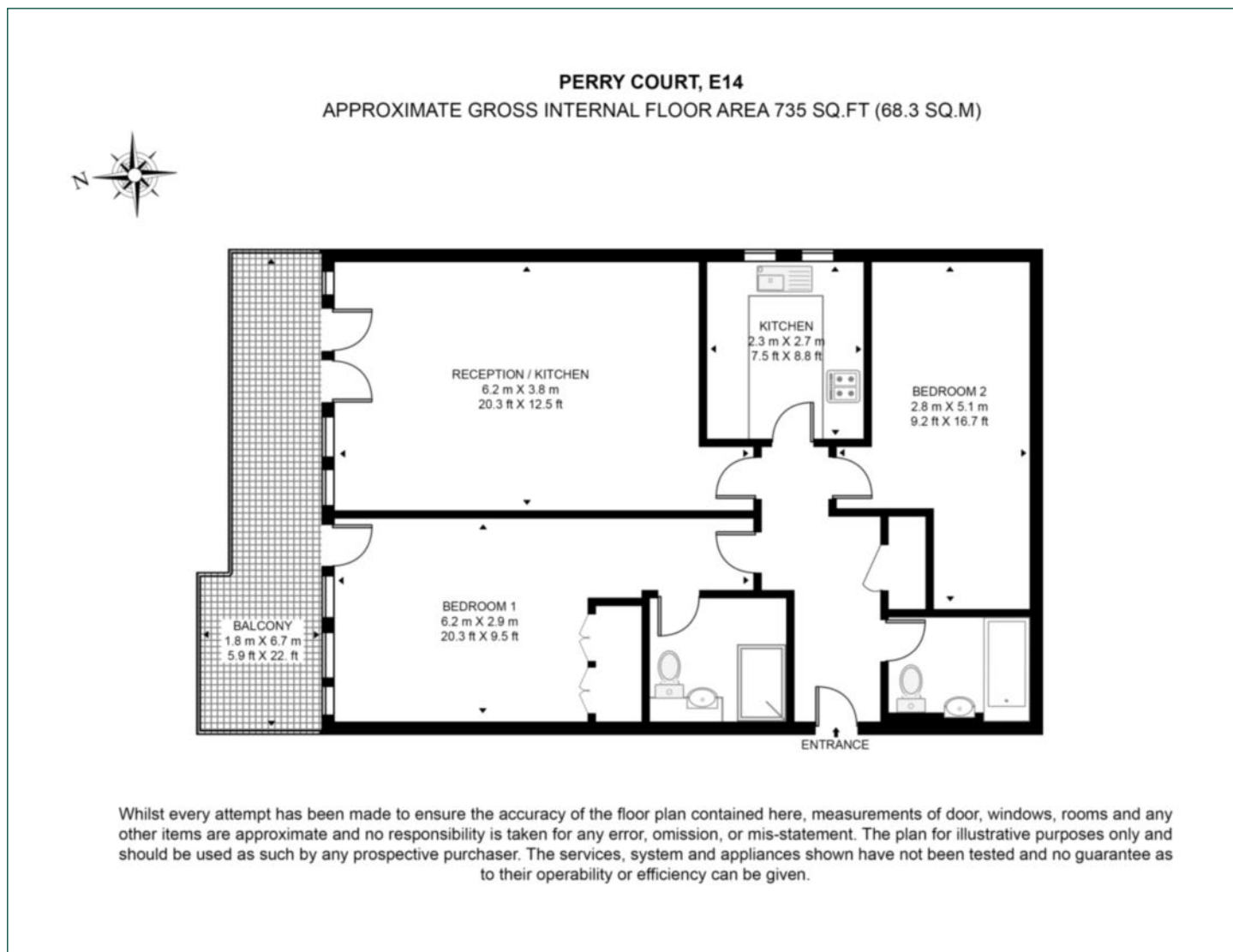
Ground Rent: £590 p.a. **Council Tax Band:** D

Service Charge: £3,754 p.a. **EPC:** C



Floorplan

735 sq ft | 68 sq m



Docklands

St David's Square, 320 Westferry Road, London, E14 3QL

Sales

020 7510 8445 | docklands.sales@chaseevans.co.uk

We're here to help.

IMPORTANT NOTICE - These particulars have been prepared in good faith and they are not intended to constitute part of an offer or contract. We have not performed a structural survey on this property and the services, appliances and specific fittings have not been tested. All photographs, measurements, floor plans and distances referred to are given as a guide and should not be relied upon.

chaseevans.com

 Chase Evans