



Mercury Court, Homer Drive, Isle of Dogs, E14

Asking price **£600,000** | Share of Freehold



Mercury Court, Homer Drive, Isle of Dogs, E14



2 Bedrooms



2 Bathrooms



1 Reception



Balcony



Gymnasium



Secure Allocated
Off-Street Parking



Local Amenities



24-Hour Concierge



0.5 MI Mudchute

Bright two double bedroom, two bathroom property located in the popular Cyclops Wharf development, Isle of Dogs. Features a spacious bay-fronted living area, separate fitted stylish kitchen with integrated appliances, recessed storage cupboard, phone entry system, recessed lighting and wood flooring, two generous bedrooms, one with entrance to the balcony, master bedroom with en-suite, family bathroom, balcony with views of the River Thames and secure allocated off-street parking.

Cyclops Wharf provides residents with lift access, 24-hour concierge service, gymnasium, swimming pool and Jacuzzi. Moments from the local amenities of Westferry Road, the shops, bars and restaurants of the exclusive Canary Wharf complex are also within easy reach.

Local transport links include Mudchute Station (DLR) and Canary Wharf Underground Station (Jubilee Line) and Masthouse Terrace Pier (River Bus).

Tenure: Share Of Freehold (996 years remaining)

Local Authority: Tower Hamlets

Ground Rent: N/A

Council Tax Band: E

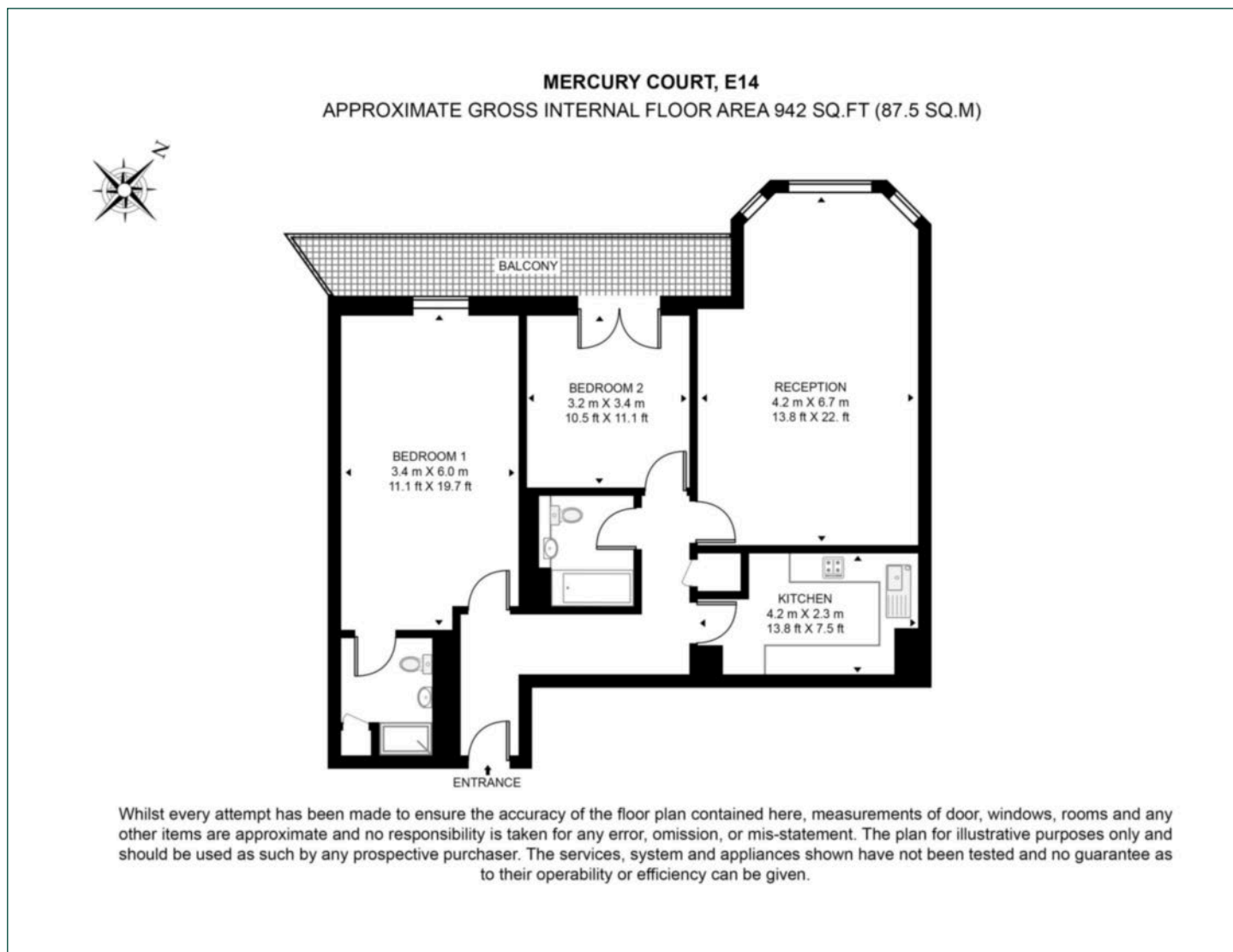
Service Charge: £6,600 p.a.

EPC: C



Floorplan

942 sq ft | 87.5 sq m



Docklands

St David's Square, 320 Westferry Road, London, E14 3QL

Sales

020 7510 8445 | docklands.sales@chaseevans.co.uk

We're here to help.

IMPORTANT NOTICE - These particulars have been prepared in good faith and they are not intended to constitute part of an offer or contract. We have not performed a structural survey on this property and the services, appliances and specific fittings have not been tested. All photographs, measurements, floor plans and distances referred to are given as a guide and should not be relied upon.

[chaseevans.com](https://www.chaseevans.com)

 Chase Evans