

Royal Dock West, Western Gateway, Docklands, E16

Asking price **£420,000** | Leasehold



Royal Dock West, Western Gateway, Docklands, E16



1 Bedroom



1 Bathroom



1 Reception



Balcony



Secure Cycle
Storage



Local Amenities



24-Hour Concierge



0.2 MI Royal Docks
0.2 MI Royal Victoria

Spacious one bedroom apartment in Western Gateway, Royal Dock West E16. Comprising a bright, spacious living area with a modern, fully fitted and integrated kitchen suite and access to a generous private balcony. Large double bedroom with fitted wardrobe. Additional fitted storage space and contemporary family bathroom suite in the hall.

Residents will benefit from secure cycle storage, communal gardens and a 24-hour concierge service. Royal Docks West is just steps from the water's edge; a place of leisure, with its many boutiques, cafes, restaurants and boutique

shopping. Linked to several bus routes and the DLR, Royal Docks West offers a simple and quick connection to so much of what London has to offer.

Tenure: Leasehold (178 years remaining) **Local Authority:** Newham London

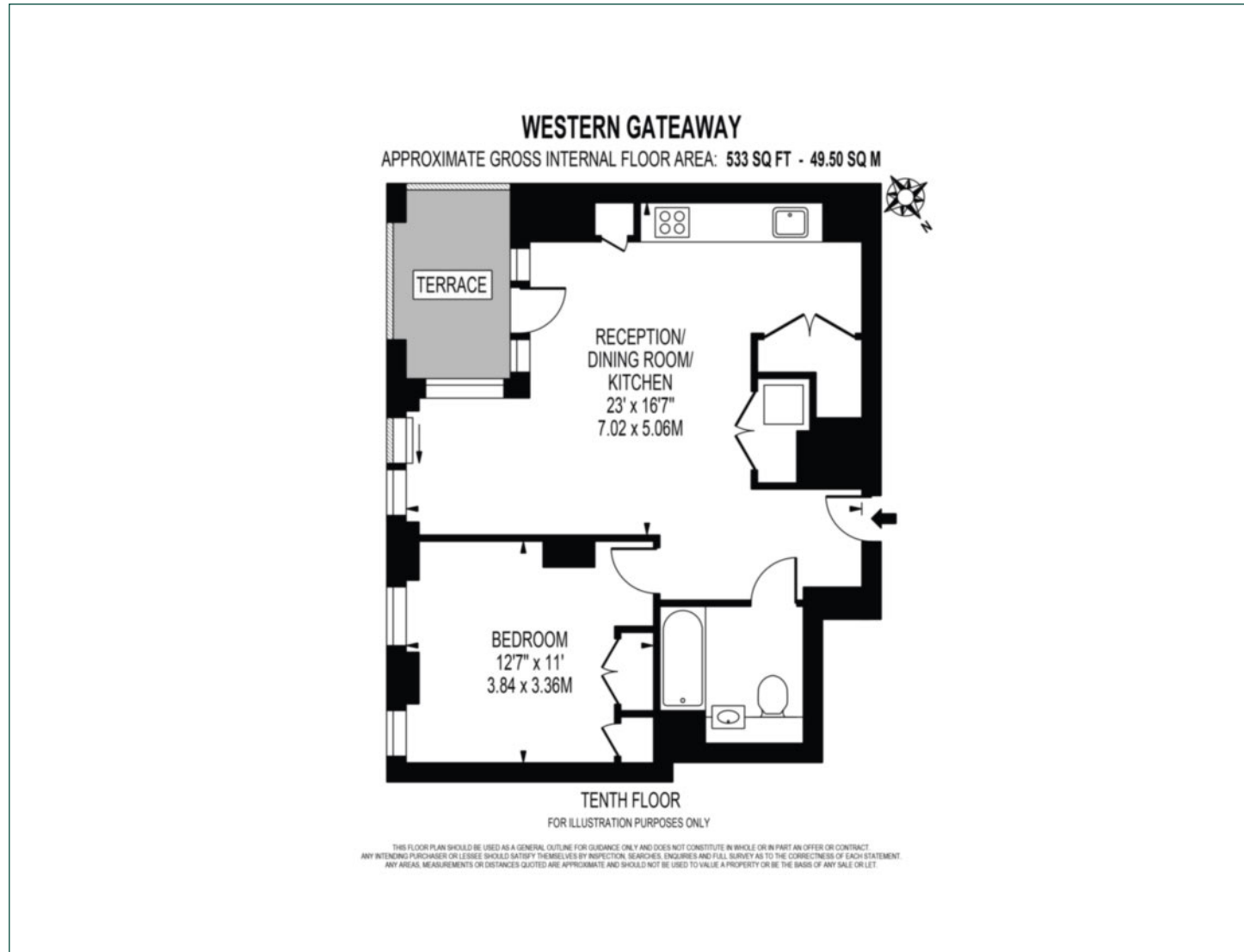
Ground Rent: £400 p.a. **Council Tax Band:** C

Service Charge: £2,900 p.a. **EPC:** B



Floorplan

533 sq ft | 49.50 sq m



Docklands

St David's Square, 320 Westferry Road, London, E14 3QL

Sales

020 7510 8444 | docklands.sales@chaseevans.co.uk

We're here to help.

IMPORTANT NOTICE - These particulars have been prepared in good faith and they are not intended to constitute part of an offer or contract. We have not performed a structural survey on this property and the services, appliances and specific fittings have not been tested. All photographs, measurements, floor plans and distances referred to are given as a guide and should not be relied upon.

chaseevans.com