



Earlsfield Road London SW18

We are delighted to offer this two bedroom split-level conversion flat, on the top floors of this handsome Victorian house on the corner of Earlsfield Road and Cargill Road. The flat offers well-proportioned rooms, high ceilings and a good layout. The large windows are double glazed sash style, with large Veluxes in the upper bedroom, bathroom and hallway. It is really nicely presented throughout in a neutral colour scheme with coordinating carpeting and flooring.

Earlsfield mainline station is within a few minutes' walk, with excellent services to Waterloo and only one stop to Wimbledon and the District Line tube. Major bus routes connect the area in all directions, offering a quick link to Clapham Junction. The immediate area has a wide choice of shops, bars and restaurants, with more extensive shopping and leisure facilities, including several gyms and a multiplex cinema, available in nearby Wandsworth Town, Wandsworth Common is also close by.

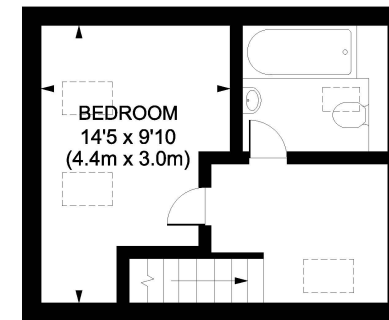
Tenure : Leasehold

Local Authority : Wandsworth

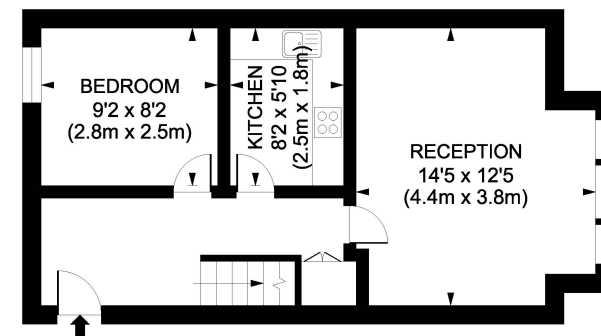
- Split level conversion
- Two bedrooms
- Reception room
- Kitchen
- Bathroom
- Neutral decor
- Nicely presented
- Close to station

cound
.co.uk

Wandsworth 020 8877 1166
Earlsfield 020 8871 3344
Southfields 020 8780 2121



SECOND FLOOR

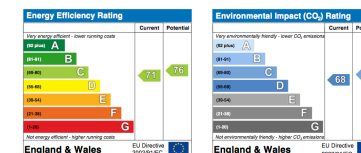


FIRST FLOOR

Earlsfield Road, SW18

Gross internal area 656 sq ft/61 sq metres

© photosandfloorplans.com





Earlsfield Road London SW18

cound
.co.uk