



St. Hildas Close, Didcot

Oxfordshire

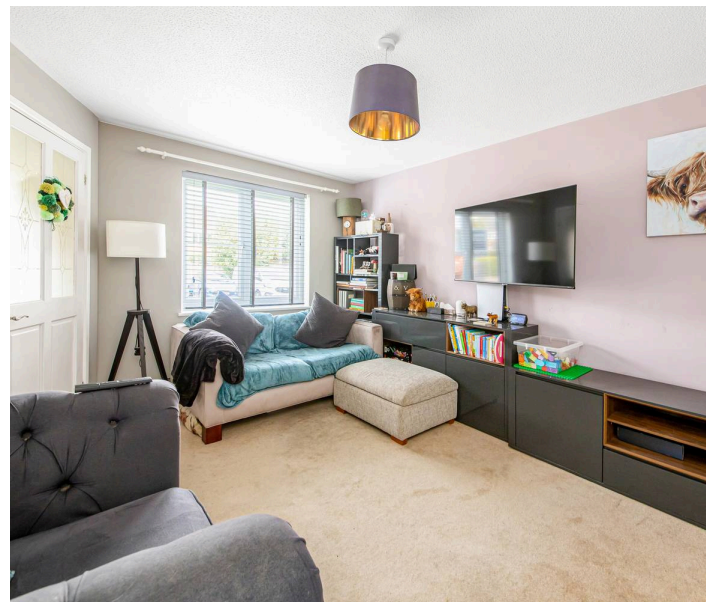
St. Hildas Close

Didcot

****Coming to the market with a closed chain****

Hodsons are delighted to present to the market this two bedroom mid terrace house situated in St Hilda's Close, Didcot. The property comprises a welcoming entrance space perfect coats and leading into the comfortable lounge. The kitchen/diner has space for a table and chairs and ample storage including the large understairs storage cupboard. There is an integrated oven, hob and fridge/freezer and space for a washing machine. The first floor offers the generous main bedroom with fitted wardrobes, a second double bedroom and the modern family bathroom. The garden to the rear of the property is mainly laid to lawn with a small patio area and gated access leading to the two allocated parking spaces. Viewing is highly recommended.

Situated within walking distance of the town centre with a wide selection of shops, restaurants, Cineworld Cinema, Cornerstone Arts Centre and Didcot Train station. There are excellent links to the A34 leading to the M4 in the South and the M40 in the North.





St. Hildas Close

Didcot

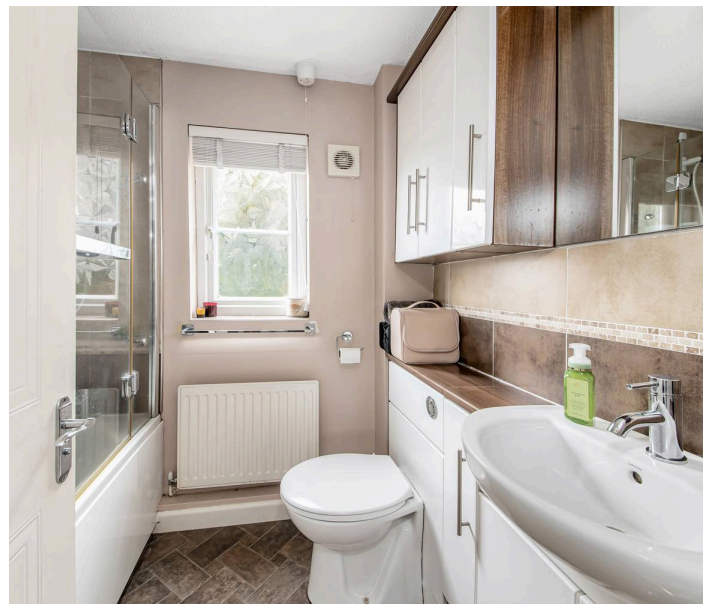
- Two bedroom mid terrace house situated on St Hilda's Close, Didcot
- Coming to market with a closed chain
- Comfortable lounge
- Kitchen/diner with space for table and chairs and ample storage including the large understairs cupboard
- Main bedroom is a generous double with fitted wardrobes
- Second double bedroom
- Modern family bathroom with shower over the bath
- Garden is mainly laid to lawn with a small patio area and gated access leading to the allocated parking spaces

Council Tax band: C

Tenure: Freehold

EPC Energy Efficiency Rating: C

EPC Environmental Impact Rating: C





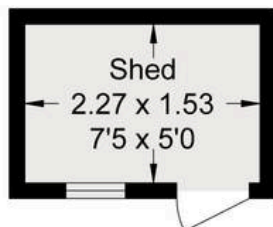
St. Hildas Close, OX11

Approximate Gross Internal Area = 55.80 sq m / 601 sq ft

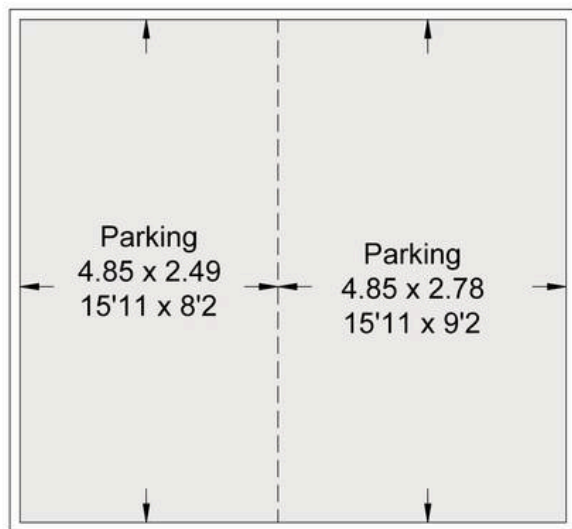
Shed = 3.50 sq m / 38 sq ft

Total = 59.30 sq m / 639 sq ft

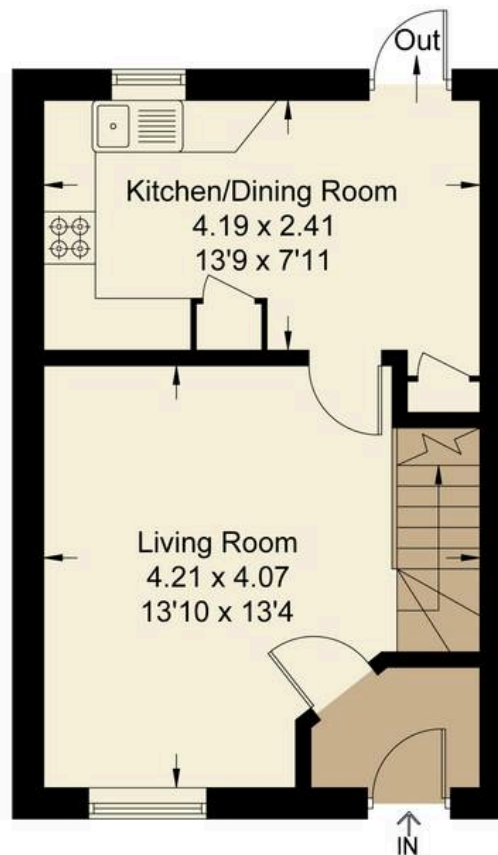
For identification only - Not to scale



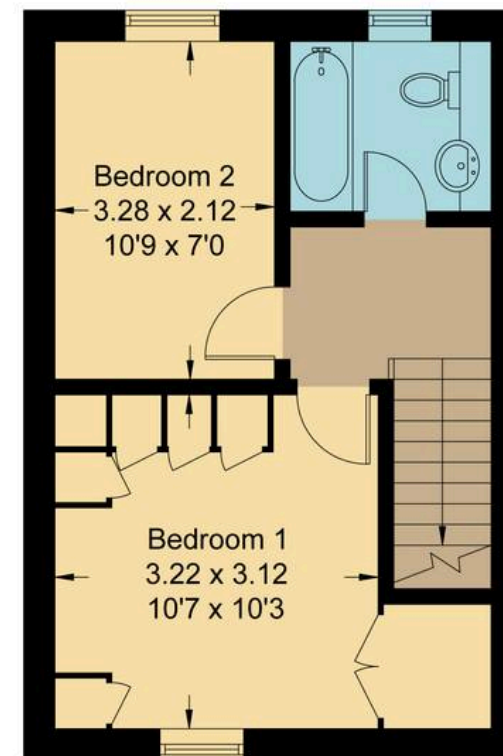
(Not Shown In Actual Location / Orientation)



(Not Shown In Actual Location / Orientation)



Ground Floor



First Floor

