



Cherry Tree Road, Harwell

Didcot





# Cherry Tree Road

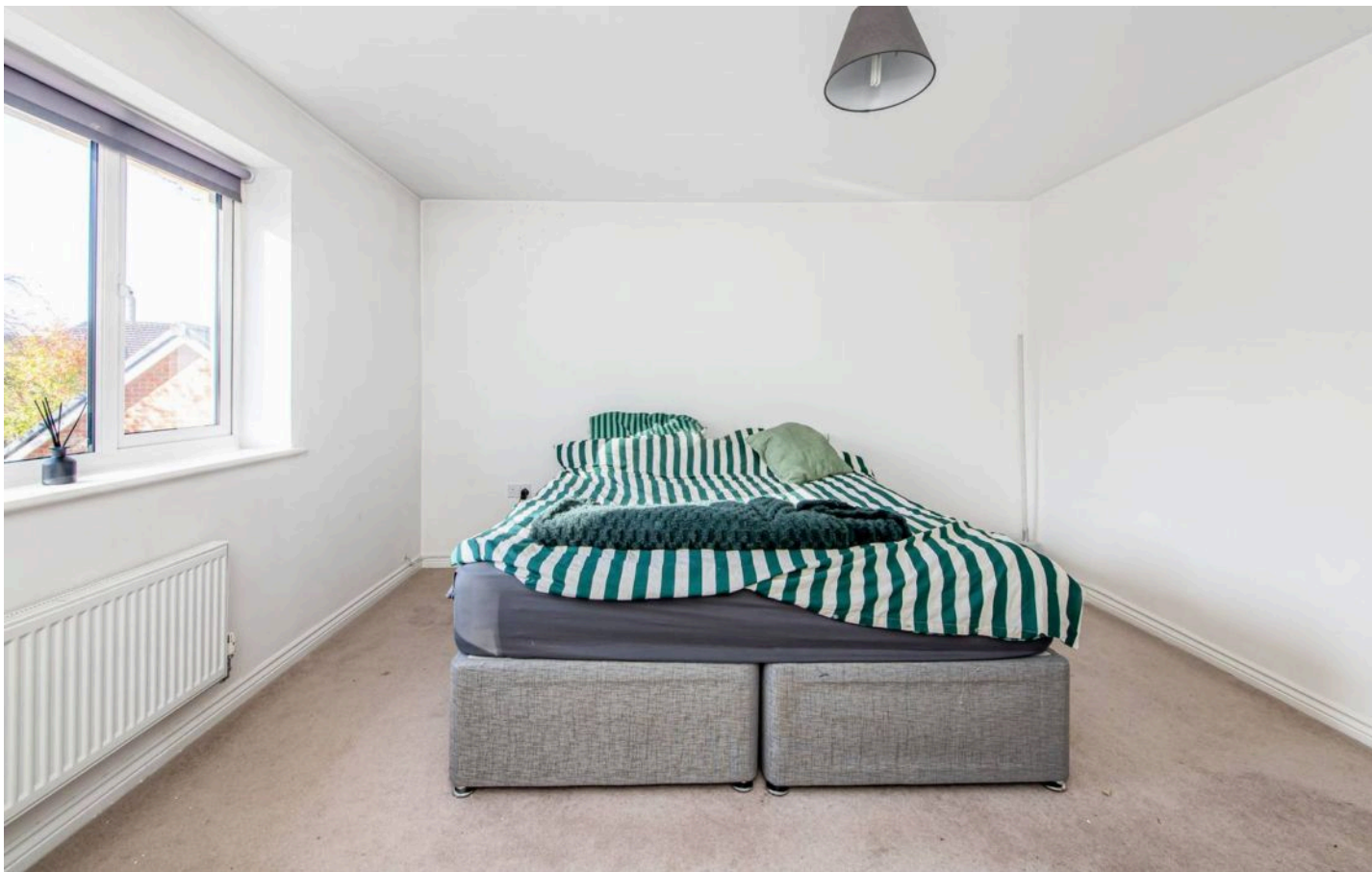
Harwell, Didcot

Coming to market with a closed chain, is the impressive three bedroom town house situated on Cherry Tree Road on the Great Western Park Development in Didcot.

With a welcoming entrance with useful storage cupboard and access to the cloakroom, the kitchen offers ample storage and integrated appliances. The comfortable lounge/diner has French doors leading out into the garden. The first floor offers a generous double and comfortable single bedroom and the modern family bathroom. The second floor offers the impressive main bedroom with fitted wardrobes and en-suite. The garden is mainly laid to lawn with a patio area and has gated access leading to the driveway parking which has space for 2 cars and access to the single garage. Viewing is highly recommended.

Situated on the Great Western Park development the property is within walking distance of Didcot Primary Academy, Aureus Secondary School and the other amenities on the development including Asda and the Station Garden Pub. There is a bus route with stops including Didcot Train Station and the town centre.





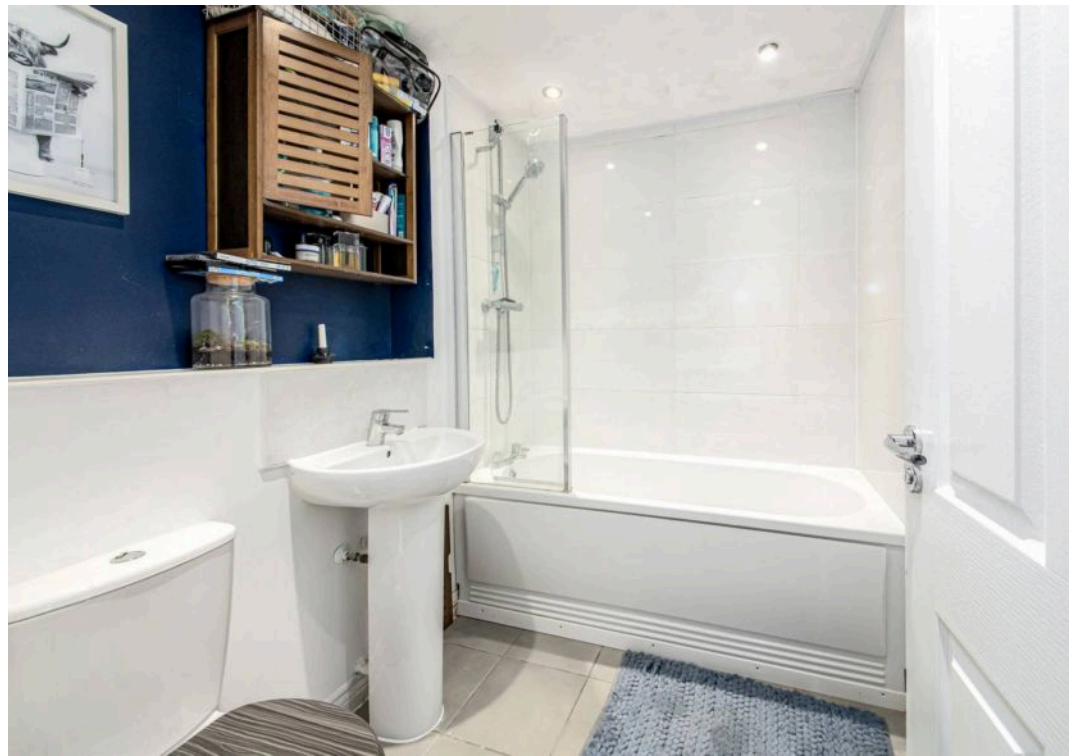
## Cherry Tree Road

Harwell, Didcot

- Three bedroom mid terrace townhouse situated on Cherry Tree Road on the Great Western Park Development
- Modern kitchen with generous storage and integrated appliances
- Comfortable lounge/diner with French doors leading out into the garden
- First floor offers a generous double and a comfortable single bedroom and the family bathroom
- Second floor offers the impressive main bedroom with fitted wardrobes and en-suite
- The garden is mainly laid to lawn with a patio area and has a gate giving access to the parking and garage
- Driveway parking for 2 cars and single garage
- Within walking distance of Didcot Primary Academy, Aureus Secondary School and local amenities



















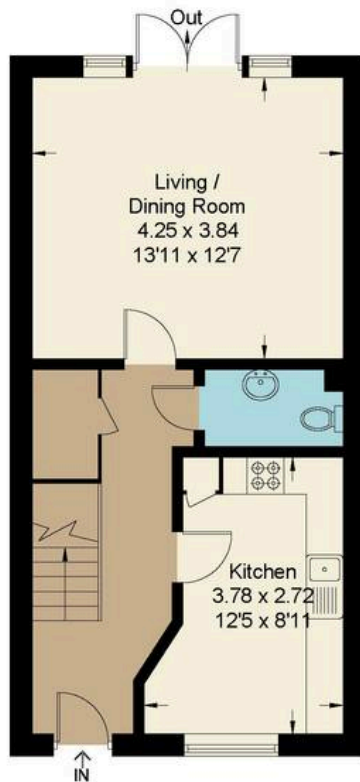
# Cherry Tree Road, OX11

Approximate Gross Internal Area = 102.40 sq m / 1102 sq ft

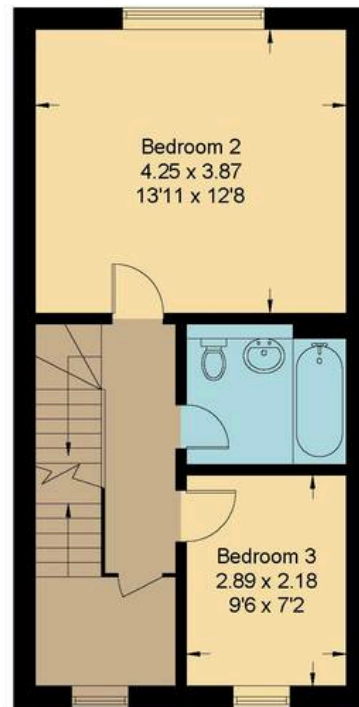
Garage = 19.50 sq m / 210 sq ft

Total = 121.90 sq m / 1312 sq ft

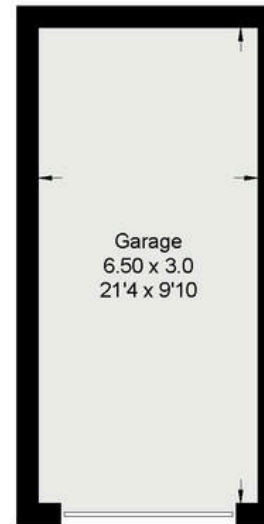
For identification only - Not to scale



Ground Floor



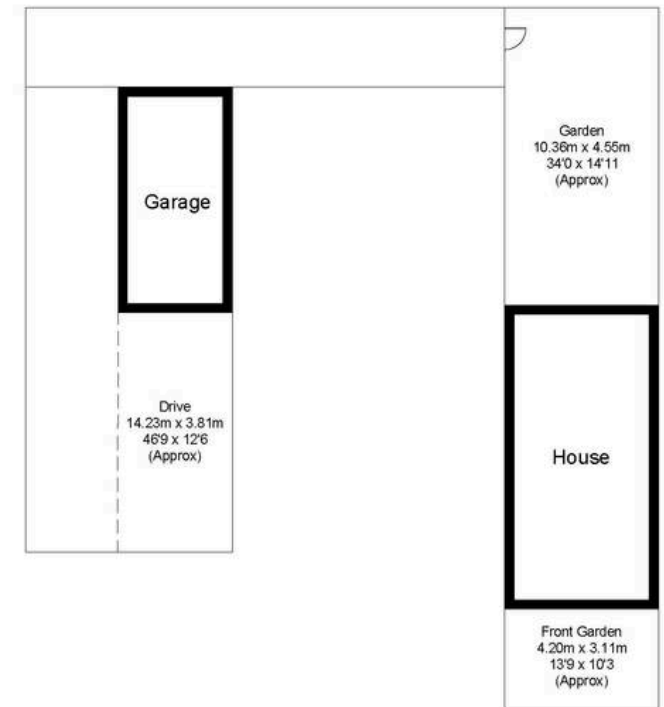
First Floor



(Not Shown In Actual  
Location / Orientation)



Second Floor



Not to scale, for illustration and layout purposes only.  
© Mortimer Photography. Produced for Hodsons.  
Unauthorised reproduction prohibited



**Hodsons**  
...your move, our passion  
Sales | Lettings

220 Broadway, Didcot  
Oxfordshire, OX11 8RS  
T: 01235 511406  
E: [didcot@hodsons.co.uk](mailto:didcot@hodsons.co.uk)  
[www.hodsons.co.uk](http://www.hodsons.co.uk)