



Rossendale Way, London



## Rossendale Way

A unique opportunity to purchase a 76% share of this shared ownership property, with no monthly rent payable on the 24%.

A stunning 2 bedroom terraced mews house located in a highly sought-after development in Camden, providing quick and easy access to transport links, shops, local amenities and just a 10 minute walk to Granary Square, in the heart of Kings Cross.

Boasting a stylish and modern interior for contemporary living, the property has had a brick built extension to the rear of the property providing a 2nd reception room with patio doors leading to a raised decked balcony overlooking a patio garden and out on to the canal.

In summary, this property is a true gem, offering a modern lifestyle in a prime location. With its stylish interior, integrated appliances in the modern kitchen and two reception rooms, modern bathroom and outside area overlooking the canal this property is not to be missed.

Viewings will take place at the property on 6th, 7th and 8th December and can be arranged via Hodsons on 01235 511406.

Please note that the vendor of the property is a family member of an employee of Hodsons.







## Rossendale Way

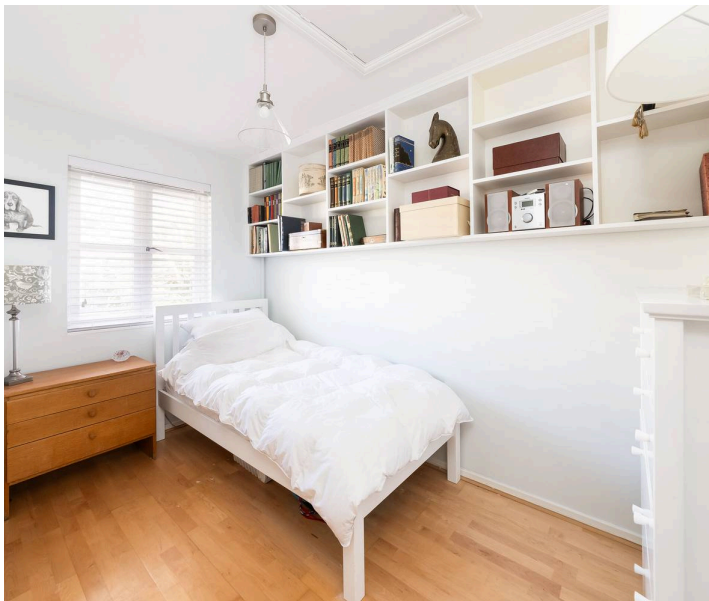
- 76% Shared Ownership - with no monthly rental payable on 24%
- Two bedroom end terrace mews house in a sought-after development in Camden
- A 10 minute walk to Granary Square, the heart of Kings Cross
- Modern kitchen with integrated appliances
- Comfortable lounge and second reception room
- Double and single bedroom
- Modern bathroom with white suite and shower over the bath
- Private garden area with decking and patio looking out over the canal

Council Tax band: D

Tenure: Leasehold

EPC Energy Efficiency Rating: C

EPC Environmental Impact Rating:

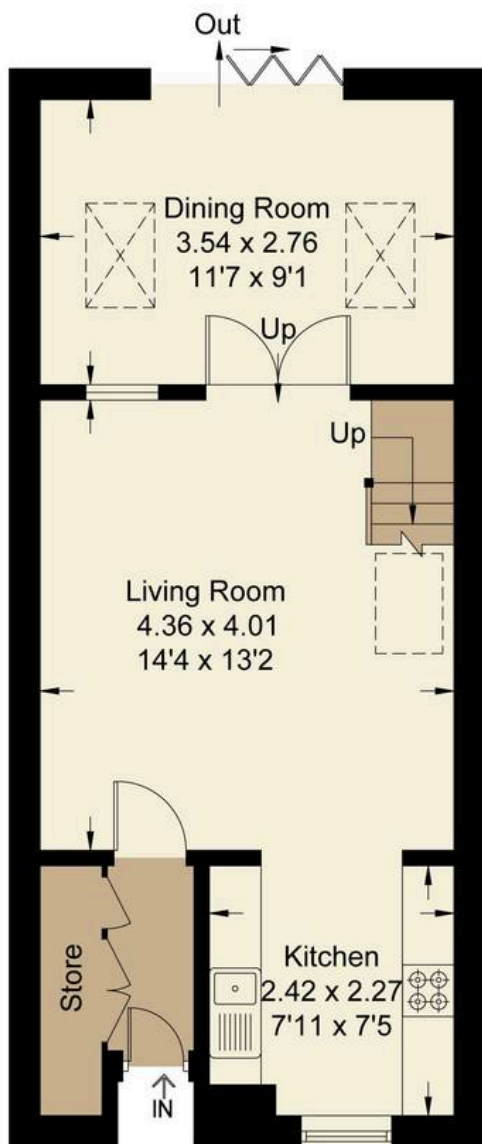




# Rossendale Way, NW1

Approximate Gross Internal Area = 66.60 sq m / 717 sq ft

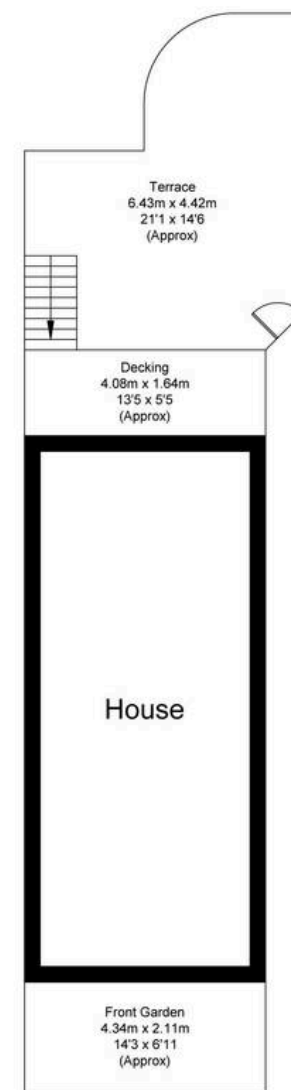
For identification only - Not to scale



Ground Floor



First Floor



Floor plan produced in accordance with RICS Property Measurement Standards.  
Not to scale, for illustration and layout purposes only.  
© Mortimer Photography. Produced for Hodsons.  
Unauthorised reproduction prohibited



**Hodsons**  
...your move, our passion  
Sales | Lettings

220 Broadway, Didcot  
Oxfordshire, OX11 8RS  
T: 01235 511406  
E: [didcot@hodsons.co.uk](mailto:didcot@hodsons.co.uk)  
[www.hodsons.co.uk](http://www.hodsons.co.uk)