



115 Bagley Close, Kennington OX1 5LU

115 Bagley Close

Spacious bay fronted three-bedroom semi-detached family home, well situated in a very pleasant cul-de-sac location close to the village's wide range of amenities complemented by detached garage and long southerly facing rear gardens offering excellent potential to extend the existing accommodation. The property requires modernisation and is sold with no ongoing chain.

Situated in an established location towards the heart of this popular village, the property offers easy access to many amenities including good schools, several shops, church and public houses. There is an excellent bus service from both Oxford city (circa. 2 miles) and nearby Abingdon town (circa. 5 miles) and the nearby A34 offers easy road links to many important destinations.

Bedrooms: 3

Bathrooms: 1

Reception Rooms: 2

Council Tax band: D

Tenure: Freehold

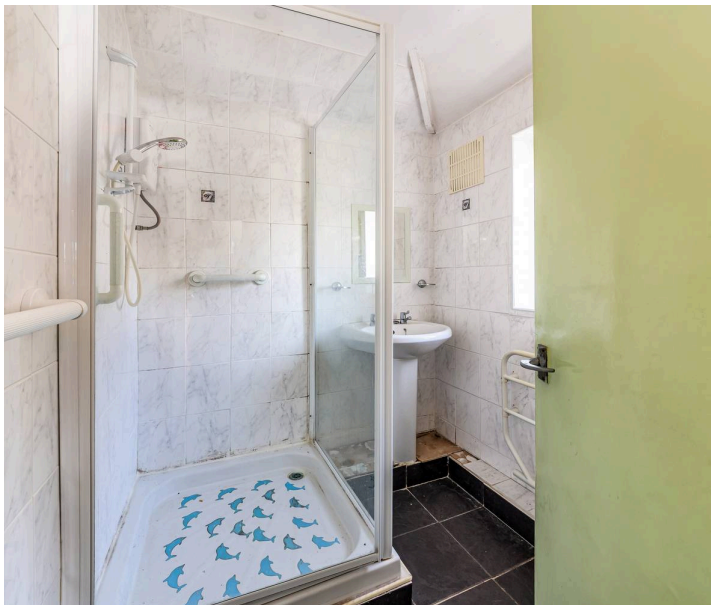
EPC Energy Efficiency Rating: E





Key Features

- Entrance hall leading to separate front living room
- Kitchen complemented by separate pantry and separate dining room overlooking the rear gardens
- Three first floor bedrooms (including two double bedrooms) complemented by shower room
- Double glazed windows and the property will be sold with no ongoing chain
- Front gardens providing parking facilities which in turn lead to detached garage
- Long southerly facing rear gardens offering excellent potential to extend the existing accommodation





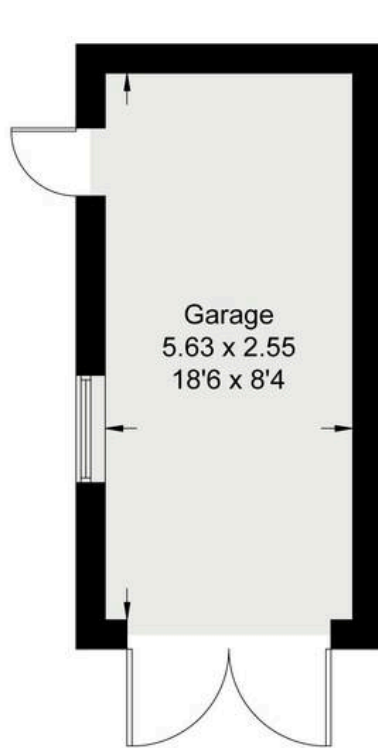
Bagley Close, OX1

Approximate Gross Internal Area = 76.10 sq m / 819 sq ft

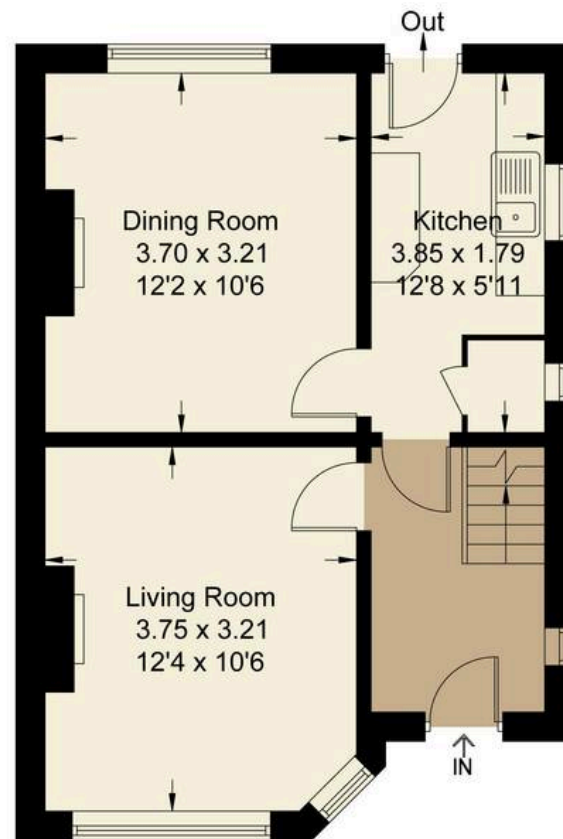
Garage = 14.40 sq m / 155 sq ft

Total = 90.50 sq m / 974 sq ft

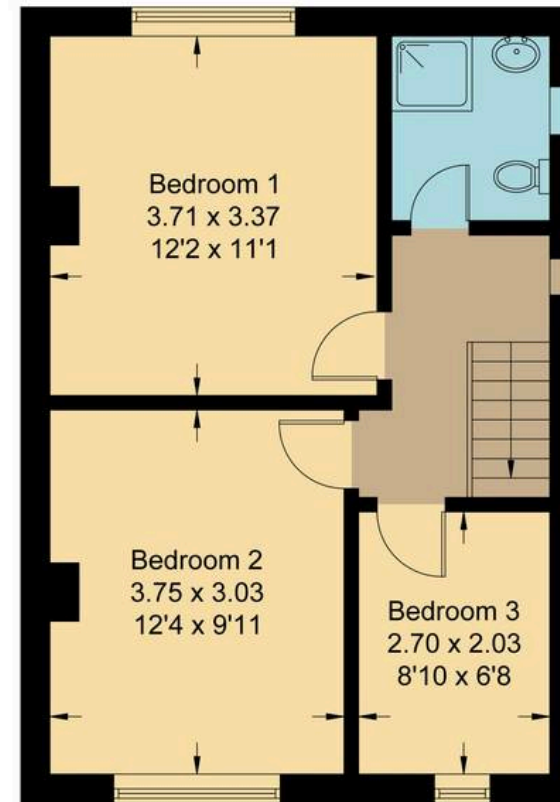
For identification only - Not to scale



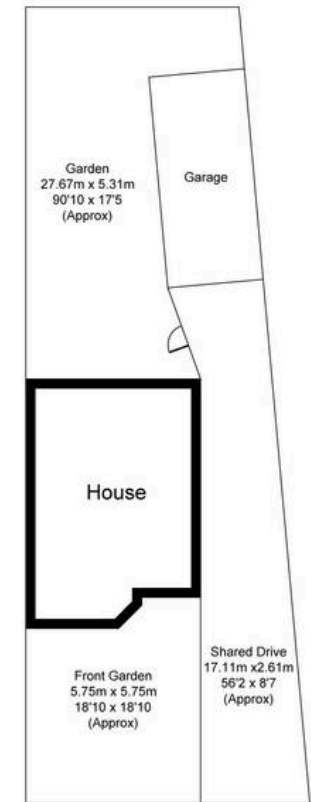
(Not Shown In Actual
Location / Orientation)



Ground Floor



First Floor



Not to scale, for illustration and layout purposes only.
© Mortimer Photography. Produced for Hodsons.
Unauthorised reproduction prohibited



Hodsons
...your move, our passion
Sales | Lettings

5 Ock Street, Abingdon,
Oxfordshire, OX14 5AL
T: 01235 553686
E: abingdon@hodsons.co.uk
www.hodsons.co.uk