



1 Little Howe Close, Radley OX14 3AJ



# 1 Little Howe Close

---

An extremely well located, extended, four bedroom detached family home on a generous corner plot with single garage. Well situated in this cul-de-sac location within Radley Village.

Little Howe Close is situated in a delightful end of cul-de-sac location within the heart of this sought after village which offers a good range of amenities including local shop, school and Radley railway station offering a commuter service to Oxford, Reading and London. Useful road distances include Abingdon town centre (circa. 2.5 miles) and Oxford city centre (circa. 5 miles).

Bedrooms: 4

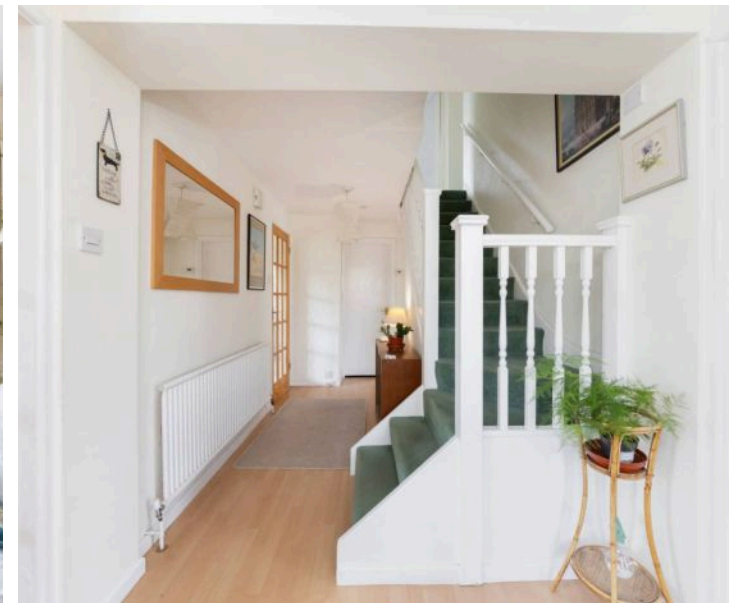
Reception Rooms: 3

Bathrooms: 1

Council Tax Band: E

Tenure: Freehold

EPC: C







## Key Features

- Generous entrance porch with double doors opening into a spacious inner hallway with stairs to the first floor and doors to all principal rooms
- Separate double aspect dining room with sliding doors opening out on to the private garden. The dining room flows through to the kitchen/breakfast room
- Re-fitted kitchen/breakfast room benefiting from a breakfast bar and separate utility room which in turn leads out to the side garden
- Sizable ground floor WC, large enough to convert into a ground floor shower room if so required
- Large double aspect living room with internal doors opening through to a highly versatile additional double aspect reception room ideal as a playroom, generous study or music room
- Four well proportioned bedrooms to the first floor all complemented by the family bathroom with white suite
- 20 fully owned solar panels
- Externally the property benefits from a single garage to the rear with driveway parking in front
- Beautiful mature gardens offering excellent degrees of privacy. Well planted and tended with a good size wrap around lawn, paved terrace and gated side access

















BRITISH  
PROPERTY  
AWARDS  
2024

GOLD WINNER

ESTATE AGENT  
IN ABINGDON

**Hodsons**  
...your move, our passion



**Introducing the Hodsons team...**  
*...trust in our experience!*





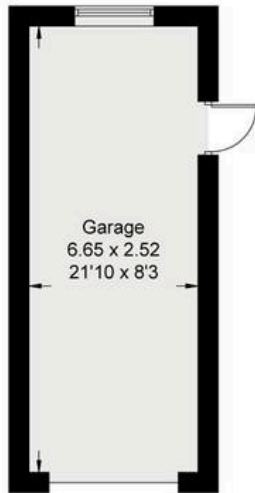
# Little Howe Close, OX14

Approximate Gross Internal Area = 121.50 sq m / 1308 sq ft

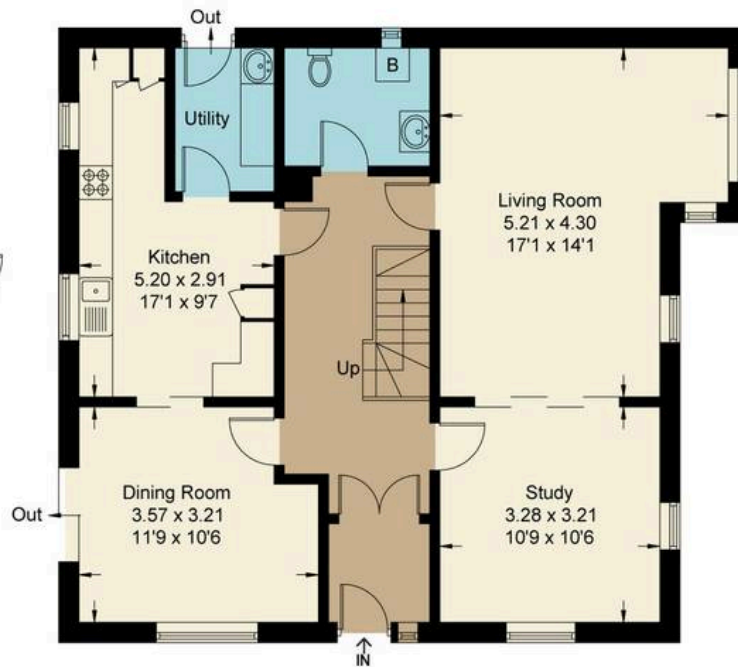
Garage = 16.80 sq m / 181 sq ft

Total = 138.3 sq m / 1489 sq ft

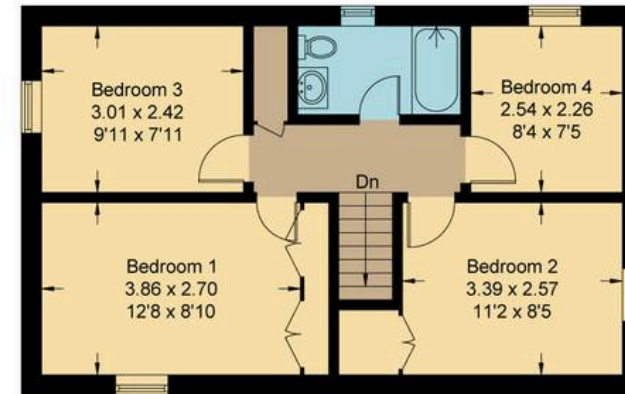
For identification only - Not to scale



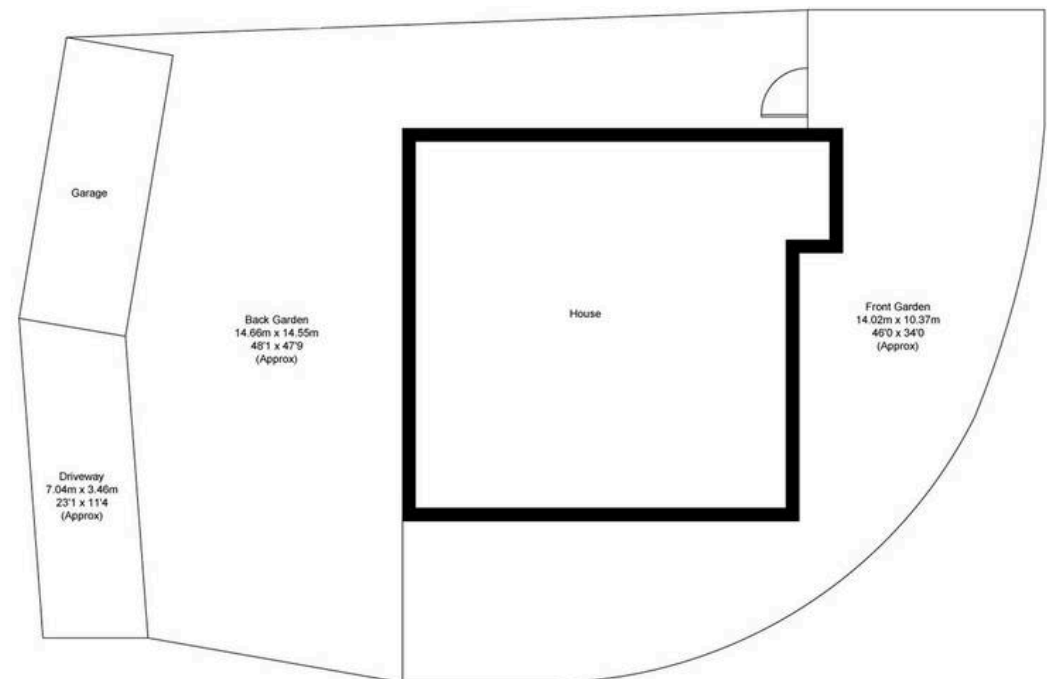
Garage



Ground Floor



First Floor



5 Ock Street, Abingdon,  
Oxfordshire, OX14 5AL  
T: 01235 553686  
E: abingdon@hodsons.co.uk  
www.hodsons.co.uk