



2 John Morris Road, Abingdon OX14 5HW

2 John Morris Road

Spacious older style three bedroom semi-detached family home, well situated in an established location close to nearby riverside walks, good schooling and the thriving town centre's many amenities, complemented by corner plot gardens offering excellent potential to either extend the existing accommodation or develop the plot subject to planning consents, sold with no ongoing chain.

John Morris Road is situated in an established position close to nearby delightful Thames-side walks, good schooling and the thriving town centre's many amenities. There is a quick route onto the A34 leading to many important destinations north and south including Didcot (circa. 7.9 miles) and Oxford city (circa. 9.7 miles).

Bedrooms: 3

Bathrooms: 2

Reception Rooms: 1

Council Tax band: C

Tenure: Freehold

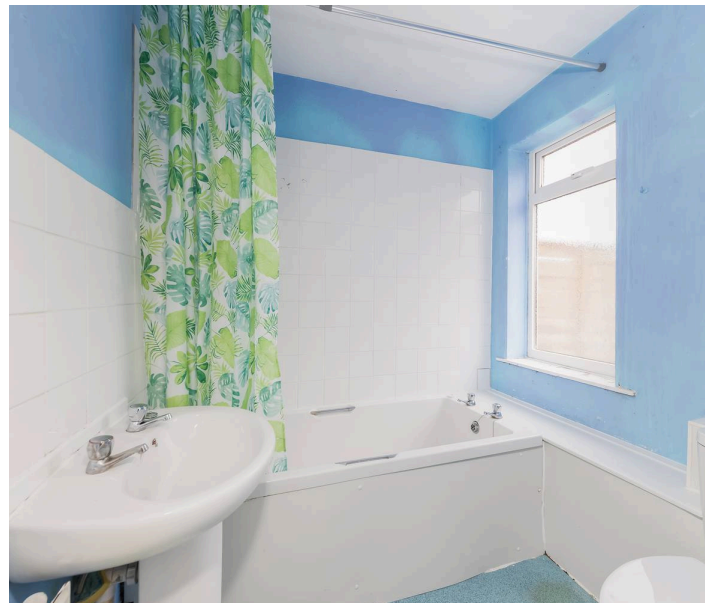
EPC: D





2 John Morris Road

- Enclosed entrance porch leading to entrance hall
- Spacious front facing living room/dining room through to recently refitted kitchen and rear porch leading to ground floor bathroom
- Principal bedroom with en-suite shower room complemented by two further good size bedrooms
- Large corner plot gardens offering excellent potential to substantially extend the existing accommodation or develop the plot - subject to planning consent
- Double glazed windows, mains gas radiator central heating and the property is sold with no ongoing chain



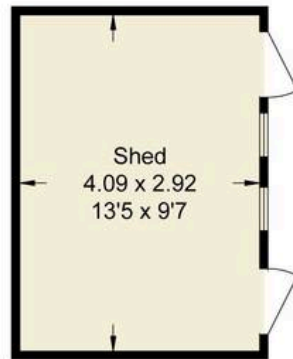
John Morris Road, OX14

Approximate Gross Internal Area = 85.60 sq m / 921 sq ft

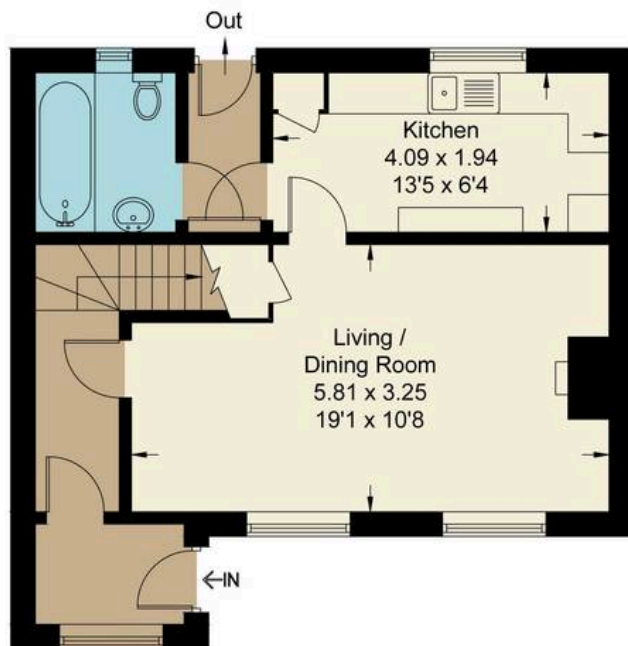
Shed = 11.90 sq m / 128 sq ft

Total = 97.50 sq m / 1049 sq ft

For identification only - Not to scale



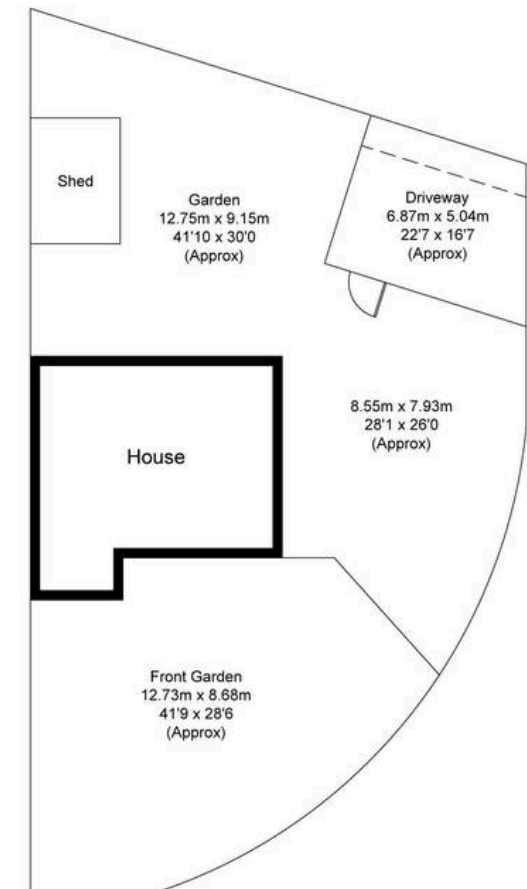
(Not Shown In Actual
Location / Orientation)



Ground Floor



First Floor



Floor plan produced in accordance with RICS Property Measurement Standards.
Not to scale, for illustration and layout purposes only.
© Mortimer Photography. Produced for Hodsons.
Unauthorised reproduction prohibited