



15 St. Helens Mews, Abingdon OX14 5SA

15 St. Helens Mews

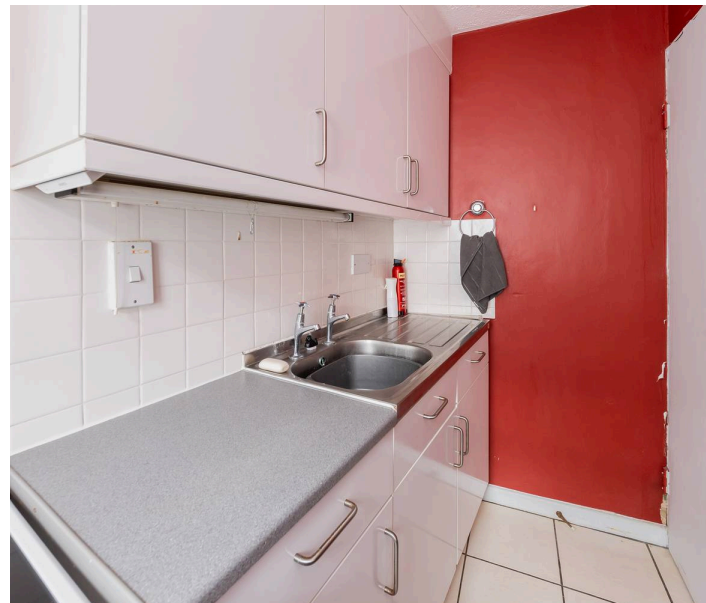
CASH BUYERS ONLY – Town centre studio apartment fronting the most attractive and historic East St Helens Street, offering well presented accommodation combined with a short walk to many nearby amenities.

15 St Helens Mews forms part of this small development, directly overlooking the historic East St. Helen Street, located within the heart of the thriving town centre and offers a short walk to a wide range of amenities, the historic market place/town hall and beautiful Thames-side walks. Useful distances include Didcot with its mainline railway station to London Padding (circa. 6.6 miles) and Oxford city centre (circa. 8.5 miles).

Council Tax band: A

Tenure: Leasehold

EPC Energy Efficiency Rating: E





Key Features

- Stairs rising to secure shared entrance with door leading to entrance hall and several useful tall storage/wardrobe cupboards
- Shower room
- Living room with panelled sash window
- Designated bedroom area
- Kitchen
- The property is leasehold with approximately 55 years left on the lease, service charge is £625.68 annually and the ground rent £75.00 annually
- Secure storage cupboard downstairs

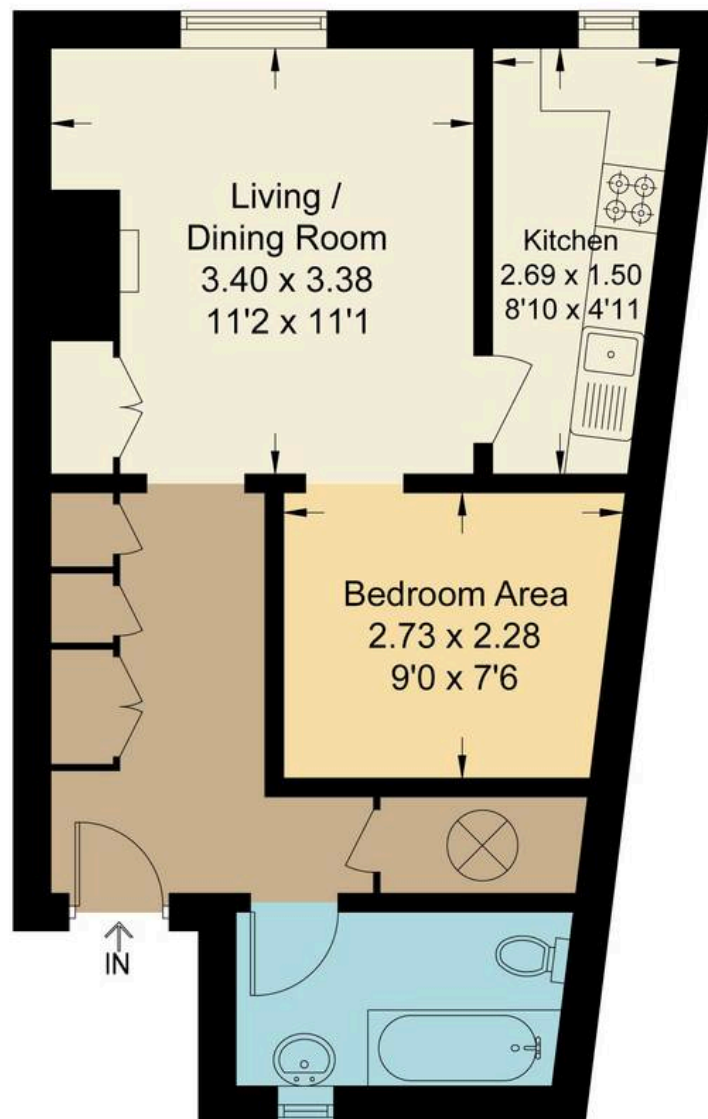




St Helens Mews, OX14

Approximate Gross Internal Area = 35.20 sq m / 379 sq ft

For identification only - Not to scale



First Floor

Floor plan produced in accordance with RICS Property Measurement Standards.
Not to scale, for illustration and layout purposes only.
© Mortimer Photography. Produced for Hodsons.
Unauthorised reproduction prohibited



Hodsons
...your move, our passion
Sales | Lettings

5 Ock Street, Abingdon,
Oxfordshire, OX14 5AL
T: 01235 553686
E: abingdon@hodsons.co.uk
www.hodsons.co.uk