



7 Landseer Walk, Abingdon OX14 5NA

7 Landseer Walk

Spacious three bedroom family home located in South Abingdon, offered to the market with a complete onward chain.

Landseer Walk is situated in an established no-through location and offers easy pedestrian access to nearby schooling and Abingdon town centre with its many facilities. There is a quick route onto the A34 leading to many important destinations north and south. Useful distances include Abingdon town centre (circa. 1.3 miles) and Oxford city centre (circa. 12.1 miles). Didcot mainline railway station is only 6 miles away with a quick route to London Paddington; ideal for commuters.

Bedrooms: 3

Bathrooms: 1

Reception Rooms: 2

Council Tax band: C

Tenure: Freehold

EPC Energy Efficiency Rating: C





Key Features

- Entrance porch through to generous entrance hall
- Good size sitting room to the front aspect which flows through to the separate dining room overlooking the garden
- Fitted kitchen to the rear aspect through to utility spaces and storage to the rear
- To the first floor are three generous bedrooms served by a refitted family bathroom with separate WC
- Externally the property benefits from a detached pre-fabricated garage, low maintenance rear gardens and gated rear access





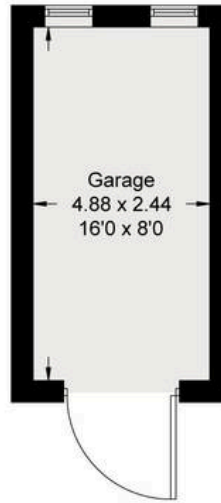
Landseer Walk, OX14

Approximate Gross Internal Area = 90.40 sq m / 973 sq ft

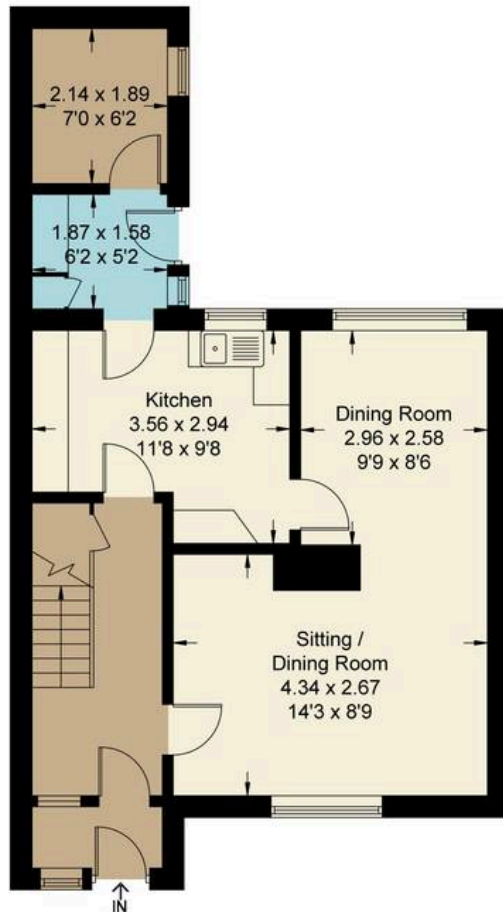
Garage = 11.90 sq m / 128 sq ft

Total = 102.30 sq m / 1101 sq ft

For identification only - Not to scale



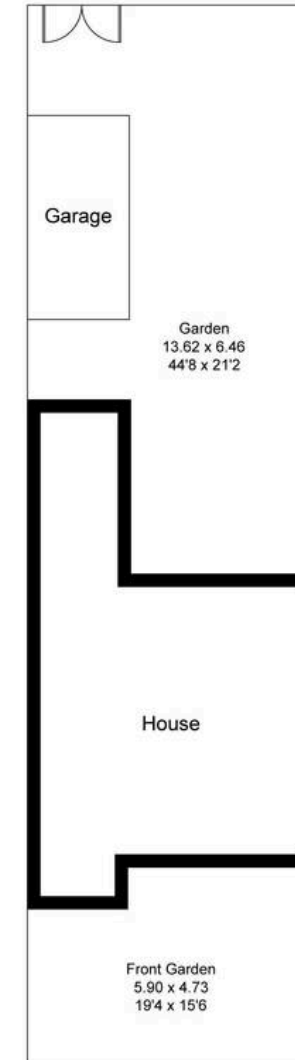
(Not Shown In Actual
Location / Orientation)



Ground Floor



First Floor



Floor plan produced in accordance with RICS Property Measurement Standards.

Not to scale, for illustration and layout purposes only.

© Mortimer Photography. Produced for Hodsons.

Unauthorised reproduction prohibited



Hodsons
...your move, our passion

Sales | Lettings

5 Ock Street, Abingdon,

Oxfordshire, OX14 5AL

T: 01235 553686

E: abingdon@hodsons.co.uk

www.hodsons.co.uk