



15 Anna Pavlova Close, Abingdon. OX14 1TF

Hodsons
...your move, our passion



15 Anna Pavlova Close

A superbly presented first floor apartment well situated within this desirable and conveniently located development. With spacious, light accommodation, two allocated parking spaces and a long lease, making this an ideal first time or investment purchase..

Location



Anna Pavlova Close is situated in a desirable cul-de-sac location within this small, select development, offering easy pedestrian access to many nearby amenities. There are several nearby bus stops and a quick vehicular route onto the A34 leading to many important destinations north and south including Oxford city (circa. 6 miles).

Directions what3words – flips.sharpness.amused

Leave Abingdon town centre using Ock Street and continue across the mini-roundabouts onto the Marcham Road. Turn right at the following large roundabout onto Colwell Drive. Turn right at the following mini-roundabout onto Willow Brook and keep left onto Anna Pavlova Close where No. 15 is found on the first floor within the first building on the left hand side, clearly indicated by the 'For Sale' board.



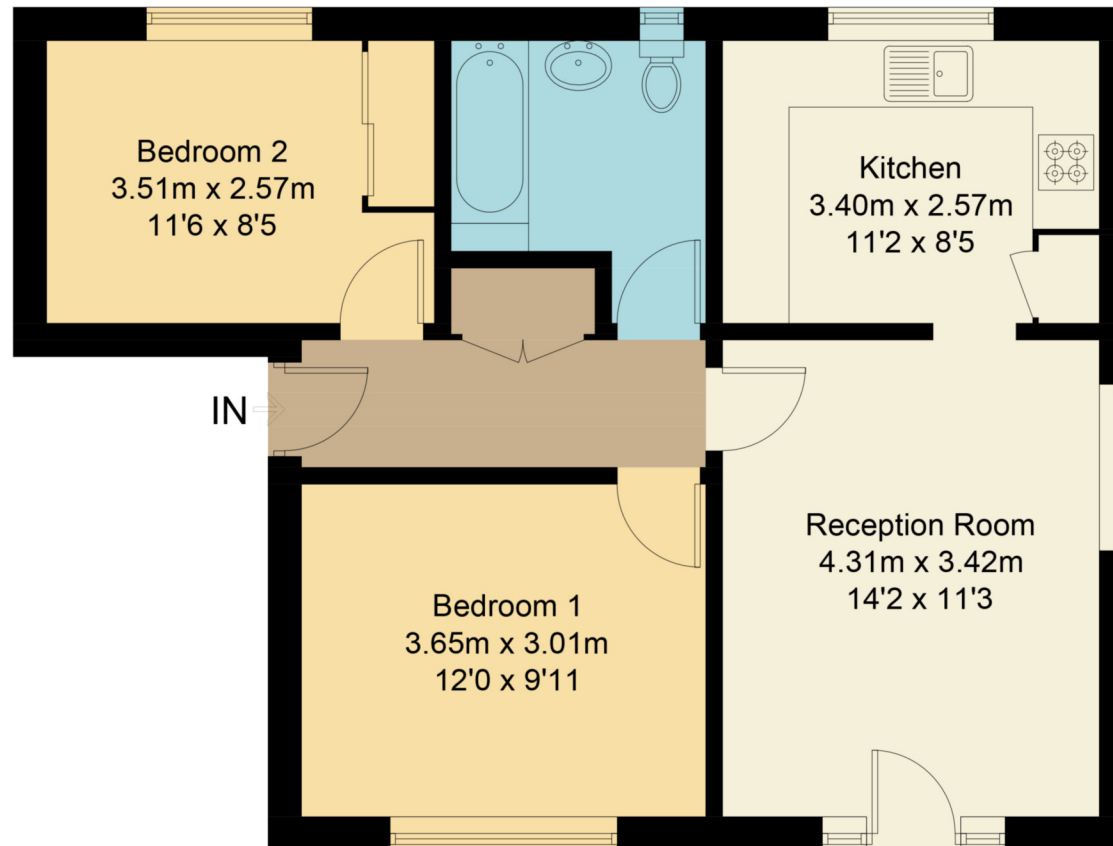
- Secure entrance from the ground floor level leading to the entrance hall with ample storage
- Two good size double bedrooms
- Refitted modern kitchen with integral appliances
- Wonderfully light double aspect living room with Juliette balcony
- Externally there are two allocated parking spaces, ample visitor parking and communal greenspace
- Excellent lease with 973 years remaining
- Service charge is £1,520.00 per annum

2		bedrooms	Council tax band	C
1		receptions	Tenure	Leasehold
1		bathrooms	EPC rating	C



Anna Pavlova Close, OX14

Approximate Gross Internal Area = 56.5 sq m / 608 sq ft



First Floor

Floor plan produced in accordance with RICS Property Measurement Standards.
© Mortimer Photography. Produced for Hodsons.
Unauthorised reproduction prohibited. (ID1072878)

