



Flat C, Abbey View House Abingdon OX14 3JF

Hodsons
...your move, our passion

Flat C

Stunning newly built two bedroom first floor apartment offering spacious and stylish accommodation boasting many features including Italian kitchen with integrated appliances, contemporary bathrooms and both bedrooms are complemented by large balconies, situated in the heart of Abingdon town centre.

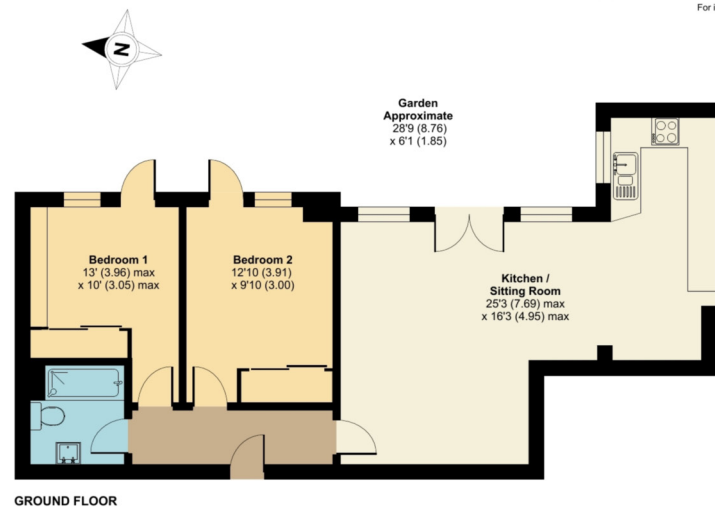
Abbey View House is a contemporary development of six, one and two bedroom apartments in the centre of historic Abingdon-on-Thames, England's oldest continuously occupied town, just a stone's throw from the River Thames. Abingdon's picturesque town centre is currently benefiting from extensive improvements to its shopping area and public buildings. The town has a good selection of eating places, plenty of leisure facilities and is 7 miles from beautiful Oxford.

Abbey View House is situated almost in the middle of Stert Street.



Stert Street, Abingdon, OX14

Approximate Area = 725 sq ft / 67.3 sq m
For identification only - Not to scale



RICS Certified Property Measurer Floor plan produced in accordance with RICS Property Measurement Standards incorporating International Property Measurement Standards (IPMS2 Residential). © rickhcom 2023. Produced for Hodsons. REF: 960643

2		bedrooms	Council tax band - C
1		receptions	Tenure - Leasehold
1		bathrooms	EPC rating - C

- Secure entrance with stairs rising to first floor floor entrance hall, large main double bedroom with fitted wardrobes
- Second double bedroom with built-in wardrobe cupboards, stylish bathroom with contemporary white suite
- Wonderful "lifestyle" room featuring well-equipped kitchen and open-plan to very flexible living/dining areas
- Spacious balcony providing delightful seating area