



# Loughborough Road, Leicester

Two-bedroom terraced house - Hutton  
available to buy through  
shared ownership

“

A home of your  
own at a price  
you can afford

”

 ncha

# Specifications

## Kitchen

- Fitted modern kitchen
- Integrated oven and hob
- Stainless steel extractor hood
- Contemporary mixer taps
- Vinyl flooring

## Bathroom

- White suite with chrome fittings
- Tiling to ceiling around the bath
- Shower over bath
- Glass shower screen
- Vinyl flooring

## Heating

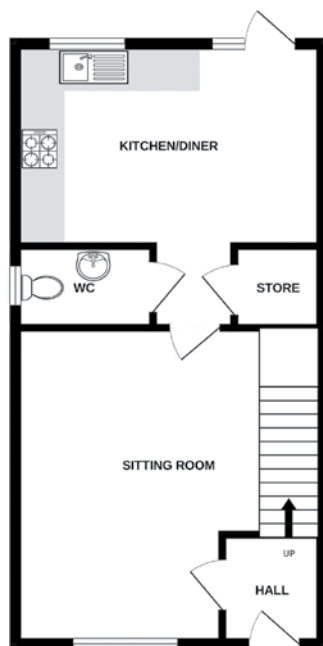
- Gas fired central heating
- Thermostatic radiator valves
- Double glazed windows

## External

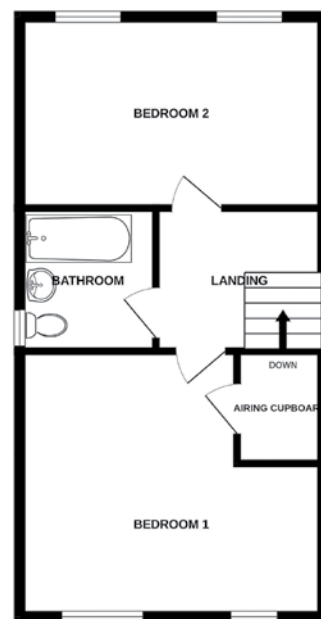
- EV charger
- Allocated off-street parking
- Enclosed rear garden

## Decoration

- White emulsion walls and ceilings
- White gloss painted woodwork



Ground floor



First floor

# Energy assessment

- Predicted energy assessment – B

# Key dimensions

Room	Dimensions
Living room	3.118m x 4.169m
Kitchen	4.115m x 3.078m
Bedroom 1	4.115m x 3.255m
Bedroom 2	4.115m x 2.917m

Any measurements quoted are approximate and must be checked on site and against the layout, which may vary due to unforeseen circumstances. Floor plans may be mirror handed. These details have been produced for illustrative purposes only and does not form any part of a contract or constitute an offer. Actual specification may vary from that shown in floor plan.

## How to find us

The development is located on Meadows Way, Leicester. If using a SatNav, the postcode is LE4 5PN.

## Buying more shares

The homes are sold on a standard shared ownership lease, so you can purchase more shares to 100% and acquire the freehold.