



CGI - Typical house type

Main Road, Long Bennington

Three-bedroom house available to buy through shared ownership

“

A home of your own at a price you can afford

”

 ncha

Specifications

Kitchen

- Fitted modern kitchen
- Integrated oven and hob
- Stainless steel extractor hood
- Vinyl flooring

Bathroom

- White suite with chrome fittings
- Tiling to ceiling around the bath
- Shower over bath
- Glass shower screen
- Vinyl flooring

Heating

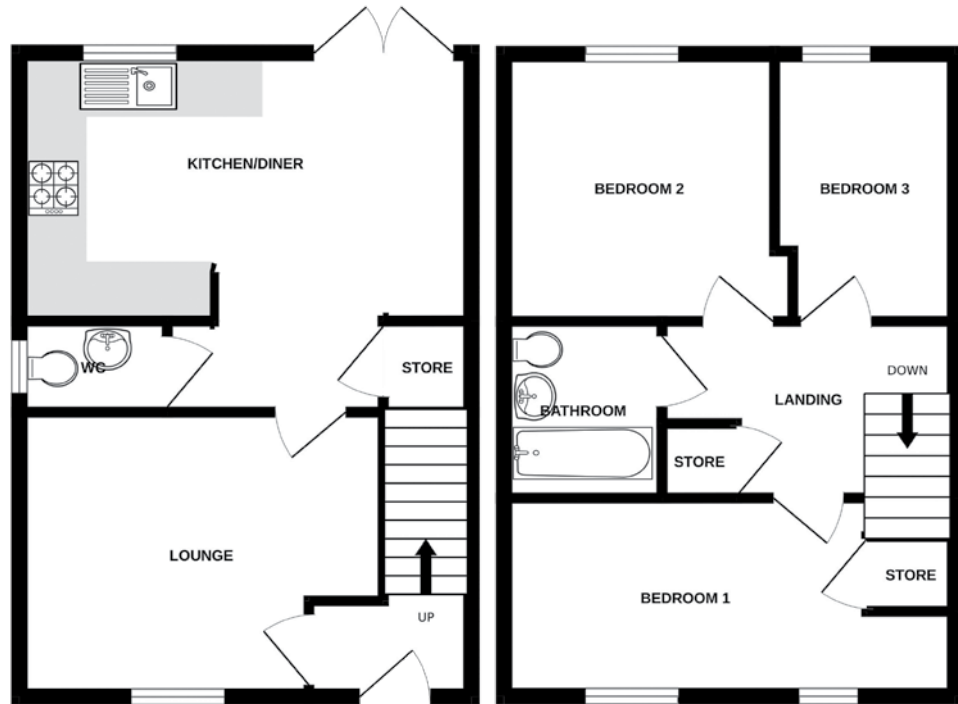
- Gas fired boiler
- Double glazed windows

External

- Allocated off-street parking
- Enclosed rear garden

Decoration

- White emulsion walls and ceilings
- White gloss painted woodwork



Ground floor

First floor

Energy assessment

- Predicted energy assessment – B

Key dimensions

Room	Dimensions
Lounge	3969mm x 4090mm
Kitchen	4998mm x 2890mm
Bedroom 1	4998mm x 2740mm
Bedroom 2	2967mm x 3198mm
Bedroom 3	1942mm x 3198mm

Any measurements quoted are approximate and must be checked on site and against the layout, which may vary due to unforeseen circumstances. Floor plans may be mirror handed. These details have been produced for illustrative purposes only and does not form any part of a contract or constitute an offer. Actual specification may vary from that shown in floor plan.

How to find us

The development is located on Main Road in Long Bennington. If using a SatNav, the postcode is NG23 5DJ.

Buying more shares

The homes are sold on a standard shared ownership lease, so you can purchase more shares to 100% and acquire the freehold.



0345 650 1204



nchasales@ncha.org.uk



www.ncha.org.uk



@NCHASalesTeam



@NCHASales