



CGI - Typical house type

# Lake Terrace, Melton Mowbray

Three-bedroom  
semi-detached house  
available to buy through  
shared ownership

“

A home of your  
own at a price  
you can afford

”

ncha

# Specifications

## Kitchen

- Fitted modern kitchen
- Integrated oven and hob
- Stainless steel extractor hood
- Contemporary mixer taps
- Vinyl flooring

## Bathroom

- White suite with chrome fittings
- Tiling to ceiling around the bath
- Shower over bath
- Glass shower screen
- Vinyl flooring

## Heating

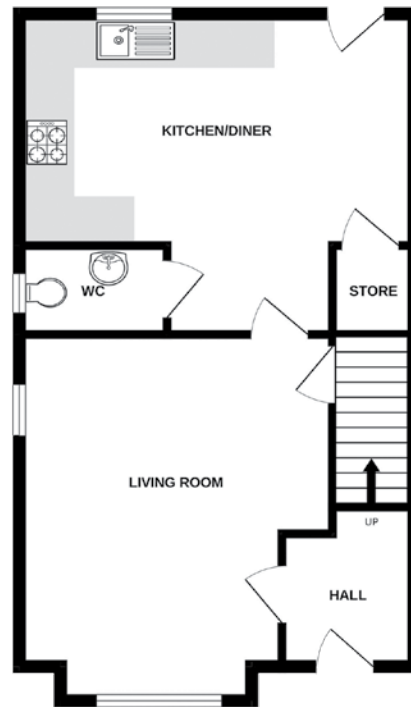
- Gas fired central heating
- Thermostatic radiator valves
- Double glazed windows

## External

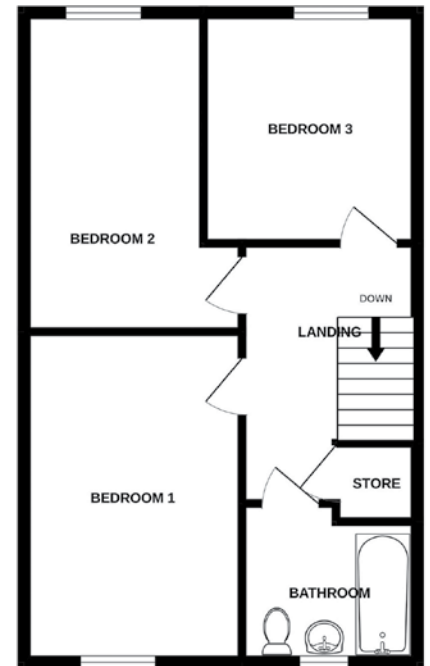
- Parking space for two cars
- Enclosed rear garden

## Decoration

- White emulsion walls and ceilings
- White gloss painted woodwork



Ground floor



First floor

# Energy assessment

- Predicted energy assessment – B

# Key dimensions

Room	Dimensions
Living room	4.246m x 3.082m
Kitchen	4.916m x 3.074m
Bedroom 1	4.051m x 2.748m
Bedroom 2	4.470m x 2.823m
Bedroom 3	2.978m x 2.425m

Any measurements quoted are approximate and must be checked on site and against the layout, which may vary due to unforeseen circumstances. Floor plans may be mirror handed. These details have been produced for illustrative purposes only and does not form any part of a contract or constitute an offer. Actual specification may vary from that shown in floor plan.

## How to find us

The development is located on Lake Terrace, Melton Mowbray. If using a SatNav, the postcode is LE13 0BZ.

## Buying more shares

The homes are sold on a standard shared ownership lease, so you can purchase more shares to 100% and acquire the freehold.



0345 650 1204  
nchasales@ncha.org.uk  
www.ncha.org.uk

@NCHASalesTeam  
@NCHASales