



CGI - Typical house type

# Goodsmoor Road, Derby

Three-bedroom terraced house  
available to buy through  
shared ownership

“

A home of your  
own at a price you  
can afford

”

 ncha

# Specifications

## Kitchen

- Fitted modern kitchen
- Integrated oven and hob
- Stainless steel extractor hood
- Vinyl flooring

## Bathroom

- White suite with chrome fittings
- Tiling to ceiling around the bath
- Shower over bath
- Glass shower screen
- Vinyl flooring

## Heating

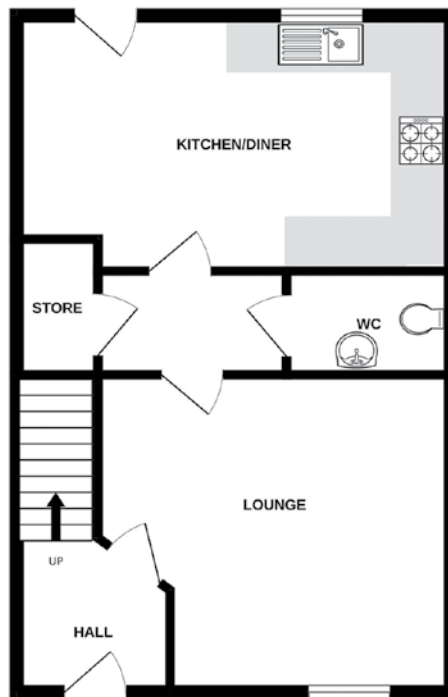
- Gas fired boiler
- Double glazed windows

## External

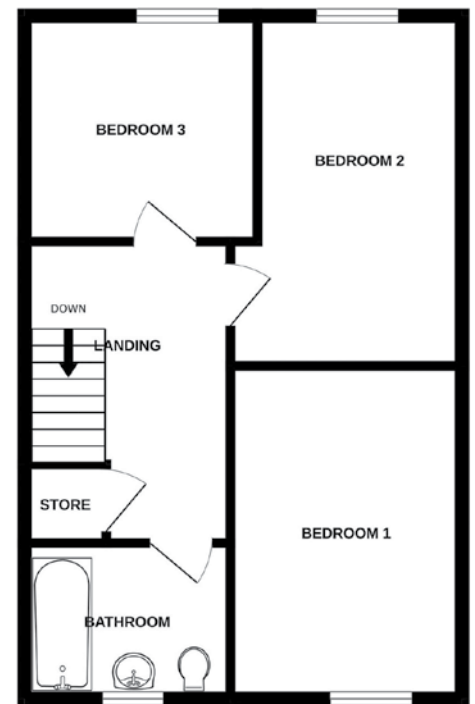
- Allocated off-street parking
- Enclosed rear garden

## Decoration

- White emulsion walls and ceilings
- White gloss painted woodwork



Ground floor



First floor

# Energy assessment

- Predicted energy assessment – B

# Key dimensions

Room	Dimensions
Lounge	4499mm x 4000mm
Kitchen/diner	5134mm x 3030mm
Bedroom 1	3823mm x 2992mm
Bedroom 2	4482mm x 2992mm
Bedroom 3	2320mm x 2625mm

Any measurements quoted are approximate and must be checked on site and against the layout, which may vary due to unforeseen circumstances. Floor plans may be mirror handed. These details have been produced for illustrative purposes only and does not form any part of a contract or constitute an offer. Actual specification may vary from that shown in floor plan.

## How to find us

The development is located on Goodsmoor Road in Derby. If using a SatNav, the postcode is DE24 9SD.

## Buying more shares

The homes are sold on a standard shared ownership lease, so you can purchase more shares to 100% and acquire the freehold.



0345 650 1204  
nchasales@ncha.org.uk  
www.ncha.org.uk

@NCHASalesTeam  
@NCHASales