



# Beech Avenue, Edwinstowe

Two-bedroom bungalow



ncha

# Specifications

## Kitchen

- Fitted modern kitchen
- Integrated oven and hob
- Extractor hood
- Vinyl flooring

## Bathroom

- White suite with chrome fittings
- Tiling to ceiling around the bath
- Shower over bath
- Glass shower screen
- Tiled flooring

## Heating

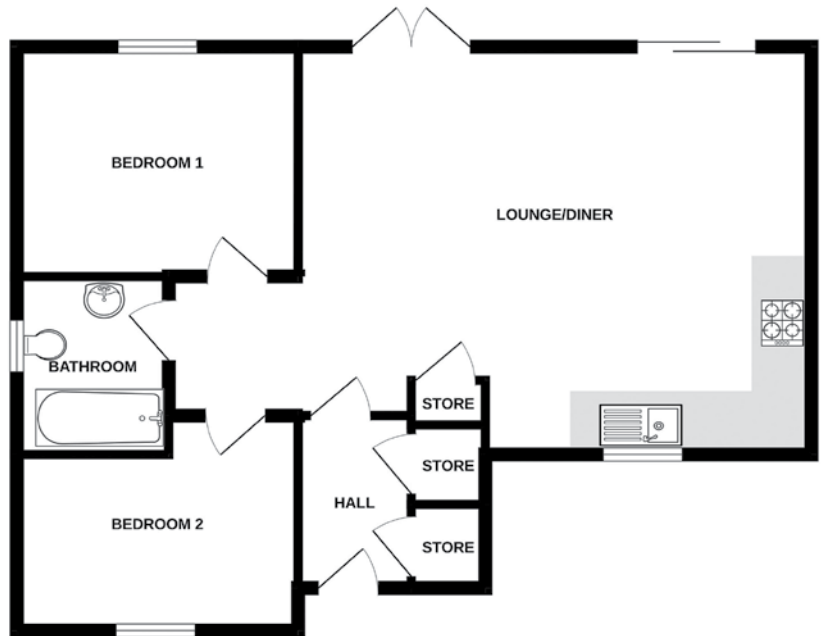
- Gas fired boiler
- Double glazed windows

## External

- Allocated off-street parking
- Enclosed rear garden

## Decoration

- White emulsion walls and ceilings
- White gloss painted woodwork



Floor plan

# Energy assessment

- Predicted energy assessment – B

# Key dimensions

Room	Dimensions
Kitchen / Living	6506m x 4494m
Bathroom	2256m x 1934m
Bedroom 1	3558m x 2925m
Bedroom 2	3546m x 2218m

Any measurements quoted are approximate and must be checked on site and against the layout, which may vary due to unforeseen circumstances. Floor plans may be mirror handed. These details have been produced for illustrative purposes only and does not form any part of a contract or constitute an offer. Actual specification may vary from that shown in floor plan.

## How to find us

The development is located on Beech Avenue in Edwinstowe. If using a SatNav, the postcode is NG21 9GR.



0345 650 1204



nchasales@ncha.org.uk



www.ncha.org.uk



@NCHASalesTeam



@NCHASales