



Mayfield Road, Ashbourne

Two-bedroom terraced
house
available to buy through
shared ownership

“

A home of your
own at a price you
can afford

”

ncha

Specifications

Kitchen

- Fitted modern kitchen
- Integrated oven and hob
- Stainless steel extractor hood
- Vinyl flooring

Bathroom

- White bath suite with chrome fittings
- Tiling to ceiling around the bath
- Shower over bath
- Glass shower screen
- Vinyl flooring

Heating

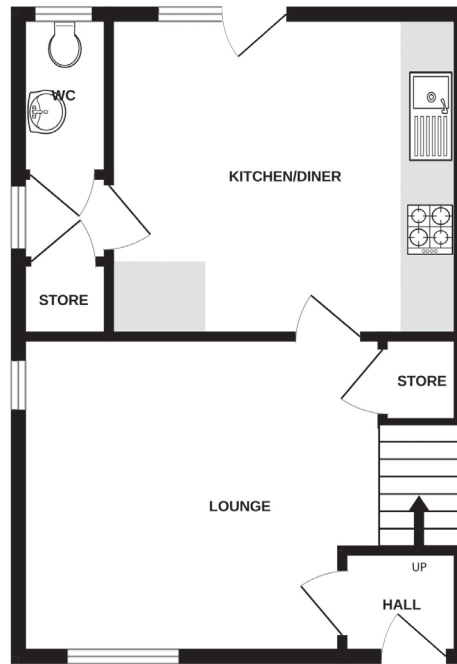
- Air source heat pumps
- Underfloor heating
- Double glazed windows

External

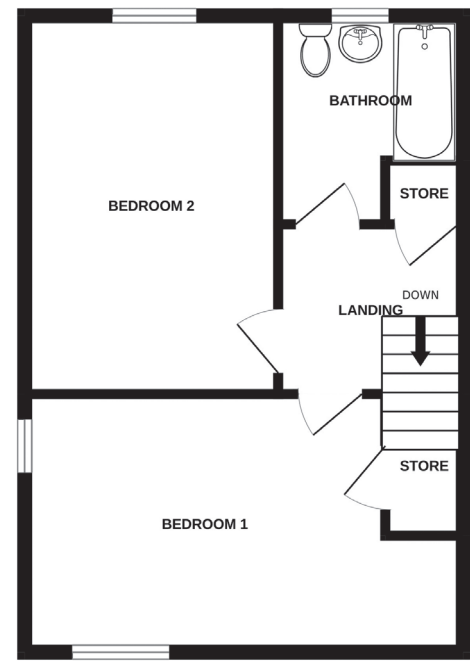
- Allocated off-street parking
- Enclosed rear garden
- Solar panels

Decoration

- White emulsion walls and ceilings
- White gloss painted woodwork



Ground floor



First floor

Energy assessment

- Predicted energy assessment – A

Key dimensions

Room	Dimensions
Lounge	3700mm x 3750mm
Kitchen	3470mm x 3920mm
Bedroom 1	4720mm x 2760mm
Bedroom 2	2600mm x 4720mm

Any measurements quoted are approximate and must be checked on site and against the layout which may vary due to unforeseen circumstances. Floor plans may be mirror handed. These details have been produced for illustrative purposes only and does not form any part of a contract or constitute an offer. Actual specification may vary from that shown in floor plan.

How to find us

These new homes are located on Mayfield Road in Ashbourne, Derbyshire. If using a SatNav, the postcode is DE6 1AR

Buying more shares

The homes are sold on a standard 990 year shared ownership lease, so you can purchase more shares to 100% and acquire the freehold.



0345 650 1204
nchasales@ncha.org.uk
www.ncha.org.uk

@NCHASalesTeam
@NCHASales