

FOR SALE



Bisset Crescent, Leamington Spa

2 Bedroom, 1 Bathroom, Semi-Detached House

£290,000

MARTIN&CO



- Two double bedrooms
- Spacious living room
- Converted garage
- Garden room
- Private rear garden
- Substantial off road parking
- Cul-de-sac location
- No chain

A well presented two bedroom semi-detached house situated in a quiet location on the outskirts of Leamington. On the ground floor there is a generous living room with bay window, conservatory overlooking the garden which connects to the kitchen, converted garage with the option to use as a reception room, bedroom or home office. On the first floor, the home accommodates two spacious double bedrooms along with a sleek bathroom furnished with a modern white suite. The property benefits from double glazing throughout, a private rear garden on two levels with sunroom and storage shed and at the front there is substantial off road parking. This would make an ideal family home or first time buy.

Score	Energy rating	Current	Potential
92+	A		
81-91	B		
69-80	C		76 C
55-68	D	65 D	
39-54	E		
21-38	F		
1-20	G		



LIVING ROOM

21' 11" x 8' 3" (6.68m x 2.51m)

OFFICE

16' 1" x 7' 6" (4.9m x 2.29m)

KITCHEN

9' 8" x 6' 10" (2.95m x 2.08m)

CONSERVATORY

13' 8" x 7' 4" (4.17m x 2.24m)

BEDROOM

12' 5" x 9' 2" (3.78m x 2.79m)

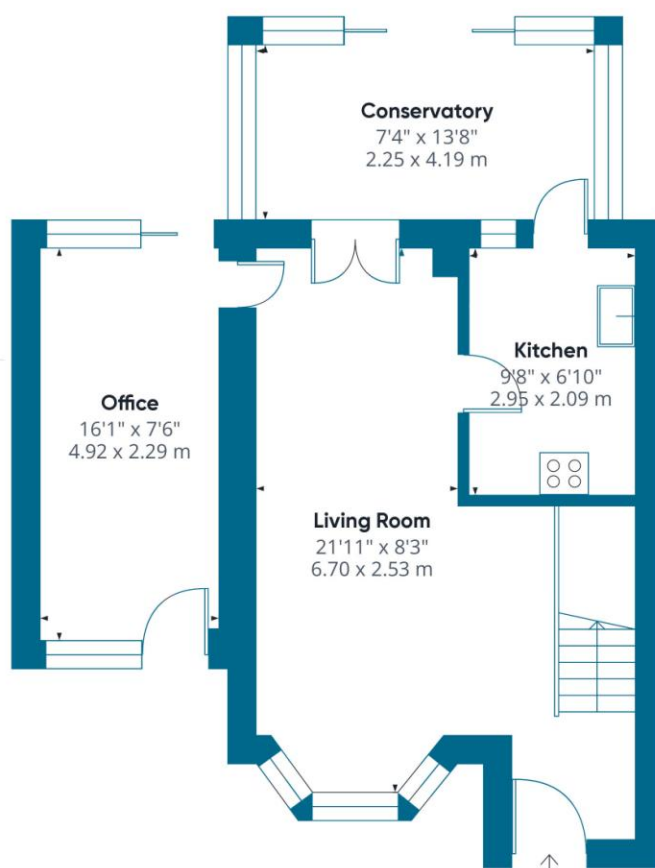
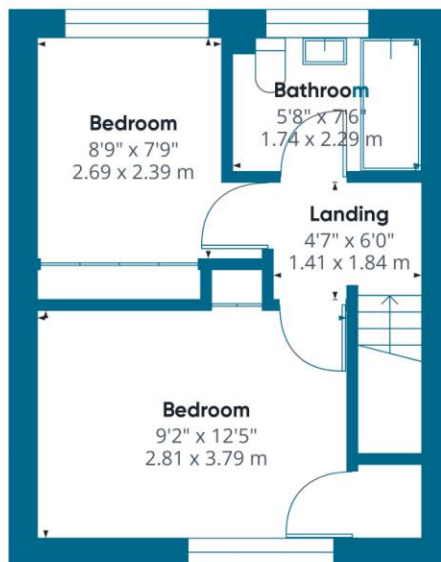
BEDROOM

8' 9" x 7' 9" (2.67m x 2.36m)

BATHROOM

7' 6" x 5' 8" (2.29m x 1.73m)





Approximate total area

839.39 ft²

77.98 m²

Martin & Co Leamington Spa

38 Hamilton Terrace • Holly Walk • Leamington Spa •
CV32 4LY

T: 01926 889 054 • E: leamingtonspa@martinco.com

01926 889 054

<http://www.martinco.com>

MARTIN&CO

Accuracy: References to the Tenure of a Property are based on information supplied by the Seller. The Agent has not had sight of the title documents. A Buyer is advised to obtain verification from their Solicitor. Items shown in photographs including but not limited to carpets, fixtures and fittings are not included unless specifically mentioned within the sales particulars. They may however be available by separate negotiation. Buyers must check the availability of any property and make an appointment to view before embarking on any journey to see a property. No person in the employment of the agent has any authority to make any representation about the property, and accordingly any information given is entirely without responsibility on the part of the agents, sellers(s) or lessors(s). Any property particulars are not an offer or contract, nor form part of one. **Sonic / laser Tape:** Measurements taken using a sonic / laser tape measure may be subject to a small margin of error. **All Measurements:** All Measurements are Approximate. **Services Not tested:** The Agent has not tested any apparatus, equipment, fixtures and fittings or services and so cannot verify that they are in working order or fit for the purpose. A Buyer is advised to obtain verification from their Solicitor or Surveyor.