



ZEBRAlets

Weekly Rental Of
£85

70 Central Drive, Shirebrook,
Mansfield, Nottinghamshire, NG20
8BQ

01623 421 300



Shared Accommodation* *NO FEES

Fully furnished, luxury double bedrooms available in a large house share situated in a very popular location.

Rooms are available from £75.00 per person per week.

All rooms have been finished to an extremely high standard, including a communal kitchen with all white goods supplied. Bathroom includes bath and separate shower cubicle. Communal areas including the kitchen are cleaned weekly. Situated within walking distance to the Sports Direct site, it is ideal for working professionals.

These rooms offer spacious and comfortable living environments in every aspect.



Nottingham Office
139 Ilkeston Road
Nottingham
NG7 3HE

T: 0115 954 0454
F: 0115 954 0455
E: nottingham@zebralets.co.uk

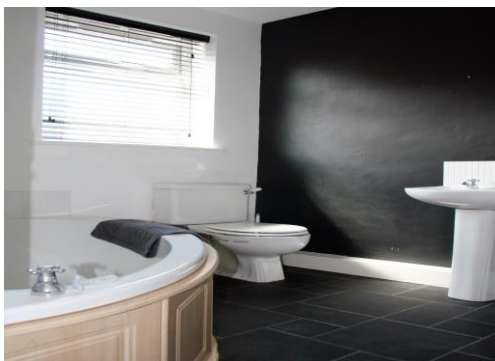
Mansfield Office
65 West Gate
Mansfield
Nottinghamshire
NG18 1RU

T: 01623 421 300
F: 01623 421 115
E: mansfield@zebralets.co.uk



ZEBRAlets

Property Details



These particulars are intended to give a fair description of the property but their accuracy cannot be guaranteed and they do not constitute an offer of contract. Intending tenants must rely on their own inspection of the property.



Energy Performance Certificate

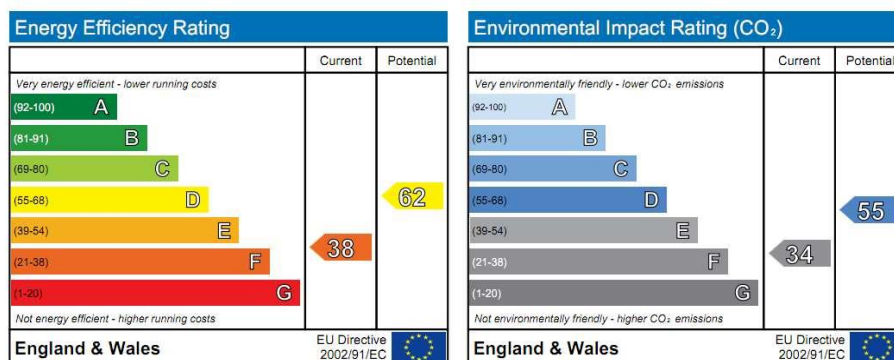
Energy Performance Certificate



70 Central Drive
Shirebrook
MANSFIELD
Nottinghamshire
NG20 8BQ

Dwelling type: End-terrace house
Date of assessment: 07 May 2008
Date of certificate: 07 May 2008
Reference number: 0444-1873-6955-0308-1281
Total floor area: 95 m²

This home's performance is rated in terms of the energy use per square metre of floor area, energy efficiency based on fuel costs and environmental impact based on carbon dioxide (CO₂) emissions.



The energy efficiency rating is a measure of the overall efficiency of a home. The higher the rating the more energy efficient the home is and the lower the fuel bills will be.

The environmental impact rating is a measure of a home's impact on the environment in terms of carbon dioxide (CO₂) emissions. The higher the rating the less impact it has on the environment.

Estimated energy use, carbon dioxide (CO₂) emissions and fuel costs of this home

	Current	Potential
Energy use	498 kWh/m ² per year	296 kWh/m ² per year
Carbon dioxide emissions	7.9 tonnes per year	4.7 tonnes per year
Lighting	£82 per year	£41 per year
Heating	£800 per year	£547 per year
Hot water	£211 per year	£90 per year

Based on standardised assumptions about occupancy, heating patterns and geographical location, the above table provides an indication of how much it will cost to provide lighting, heating and hot water to this home. The fuel costs only take into account the cost of fuel and not any associated service, maintenance or safety inspection. This certificate has been provided for comparative purposes only and enables one home to be compared with another. Always check the date the certificate was issued, because fuel prices can increase over time and energy saving recommendations will evolve.

To see how this home can achieve its potential rating please see the recommended measures.



Remember to look for the energy saving recommended logo when buying energy efficient product. It's a quick and easy way to identify the most energy efficient products on the market.

For advice on how to take action and to find out about offers available to help make your home more energy efficient call 0800 512 012 or visit www.energysavingtrust.org.uk/myhome



Nottingham Office
139 Ilkeston Road
Nottingham
NG7 3HE

T: 0115 954 0454
F: 0115 954 0455
E: nottingham@zebralets.co.uk

Mansfield Office
65 West Gate
Mansfield
Nottinghamshire
NG18 1RU

T: 01623 421 300
F: 01623 421 115
E: mansfield@zebralets.co.uk