



jordan fishwick

Apt 801 Millennium Point, The Quays, M50
£1,325 Per Calendar Month



Millennium Point Salford M50 3SE

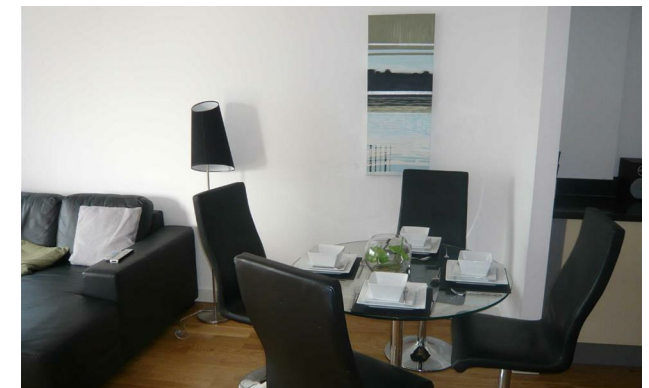
£1,325 Per Calendar Month



The Property

Available Late August. This two bedroom fully furnished eighth floor apartment located in Salford Quays benefits from Parking. The property comprises of an entrance hall, spacious living room with access to the balcony, fitted kitchen with appliances, large master bedroom with en-suite shower, second double bedroom and attractive bathroom suite. Close to Media City & shops - prime location for public transport in & out of the city. Allocated Parking. Tax Band C. EPC Rating B. No Pets Allowed.

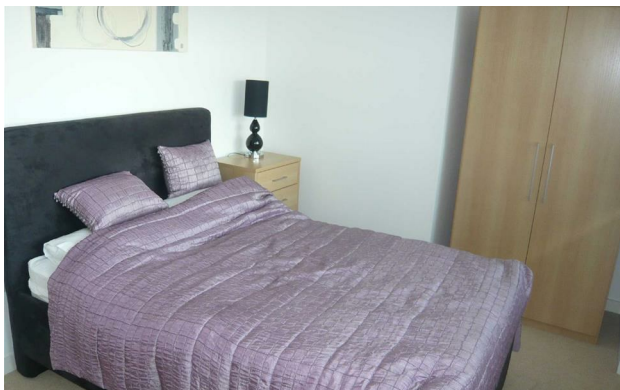
VIDEO/ PHOTO OFFERS NOT ACCEPTED - PLEASE BOOK AN IN PERSON VIEWING



- Available Late January
- 8th Floor Apartment
- Furnished Two Bedrooms
- Close to transport links
- Tax Band C
- EPC Rating B
- Media City Location
- Balcony
- Parking included



| Energy Efficiency Rating | | |
|---|----------------------------|-----------|
| | Current | Potential |
| Very energy efficient - lower running costs | | |
| (92 plus) A | | |
| (81-91) B | 82 | 82 |
| (69-80) C | | |
| (55-68) D | | |
| (39-54) E | | |
| (21-38) F | | |
| (1-20) G | | |
| Not energy efficient - higher running costs | | |
| England & Wales | EU Directive 2002/91/EC | |





These particulars are believed to be accurate but they are not guaranteed and do not form a contract. Neither Jordan Fishwick nor the vendor or lessor accept any responsibility in respect of these particulars, which are not intended to be statements or representations of fact and any intending purchaser or lessee must satisfy himself by inspection or otherwise as to the correctness of each of the statements contained in these particulars. Any floorplans on this brochure are for illustrative purposes only and are not necessarily to scale.

Offices at: Offices at Chorlton, Didsbury, Disley, Hale, Glossop, Macclesfield, Manchester Deansgate, Manchester Whitworth Street, New Mills, Sale, Wilmslow and Withington