



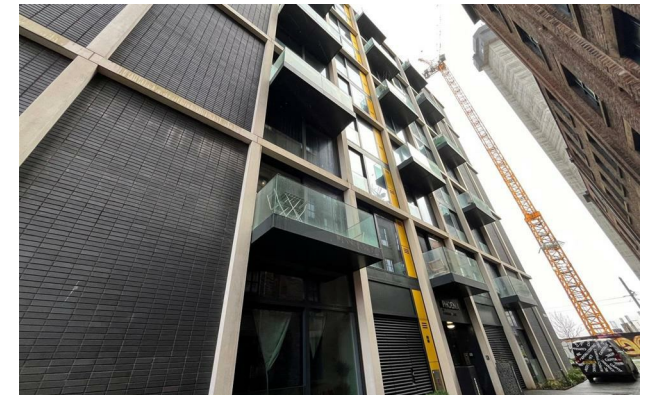
*Jordan fishwick*

Apt 607 Phoenix, 72 Chapelton Street, M1  
£1,150 Per Calendar Month



## Phoenix Manchester M1 2EY

£1,150 Per Calendar Month



### The Property

Available Now. Jordan Fishwick presents this stunning, design led one bedroom STUDIO apartment by Capital & Centric. With an abundance of modern industrial style and benefitting from a private balcony & residents garden, bike storage and onsite concierge, Phoenix apartments is one NOT to be missed!

Sixth Floor, open plan aspect, with storage options carefully considered. Laminate flooring throughout with kitchen/ living space complete with top spec integrated appliances, including fridge freezer. Furnished throughout and benefitting with a private balcony. Bedroom area with double bed & storage space. Council Tax Band B. EPC Rating C. No Parking. No Pets.


PROFESSIONALS ONLY.

\*VIDEO/ PHOTO OFFERS NOT ACCEPTED - PLEASE CALL TO BOOK A VIEWING\*



- Available Now
- 6th Floor Apartment
- Ancoats Location
- EPC Rating C
- Tax Band B
- Close to Piccadilly Train Station
- No Parking
- No Pets
- Furnished



Energy Efficiency Rating		
	Current	Potential
Very energy efficient - lower running costs		
(92 plus) <b>A</b>		
(81-91) <b>B</b>	<b>80</b>	<b>80</b>
(69-80) <b>C</b>		
(55-68) <b>D</b>		
(39-54) <b>E</b>		
(21-38) <b>F</b>		
(1-20) <b>G</b>		
Not energy efficient - higher running costs		
<b>England &amp; Wales</b>	EU Directive 2002/91/EC 	





These particulars are believed to be accurate but they are not guaranteed and do not form a contract. Neither Jordan Fishwick nor the vendor or lessor accept any responsibility in respect of these particulars, which are not intended to be statements or representations of fact and any intending purchaser or lessee must satisfy himself by inspection or otherwise as to the correctness of each of the statements contained in these particulars. Any floorplans on this brochure are for illustrative purposes only and are not necessarily to scale.

Offices at: Offices at Chorlton, Didsbury, Disley, Hale, Glossop, Macclesfield, Manchester Deansgate, Manchester Whitworth Street, New Mills, Sale, Wilmslow and Withington