



Jordan fishwick

CASTLEFIELD
Worsley Mill



Worsley Mill, Castlefield
M15 4LG
Price £240,000



The Property

Video Online.....<https://youtu.be/TwSzjqurwFU>

CASH BUYERS ONLY! This third floor duplex apartment oozes character from top to bottom! With a wealth of original features such as exposed brickwork, wooden beams and double height ceilings throughout this apartment is perfect for those seeking charm and character. Accommodation on the ground level comprises of entrance hallway with spiral staircase, stylish white bathroom suite, open plan living area with modern white gloss kitchen off and double bedroom which is currently used as second sitting room. Upstairs comprises of spacious mezzanine master bedroom with en suite shower room. This apartment comes with a secure

allocated underground parking space. Viewing is strongly recommended!

Directions

Worsley Mill is located just a short walk from Deansgate. The property offers easy access to the Ring Road, Salford Quays and all of the city centre's amenities.

- Cash Buyers Only
- Third Floor Apartment
- Duplex
- Two Bedrooms
- En-Suite & Bathroom
- Conversion
- Immaculate Condition
- Secure Parking Space
- Prime Location

Postcode - M15 4LG

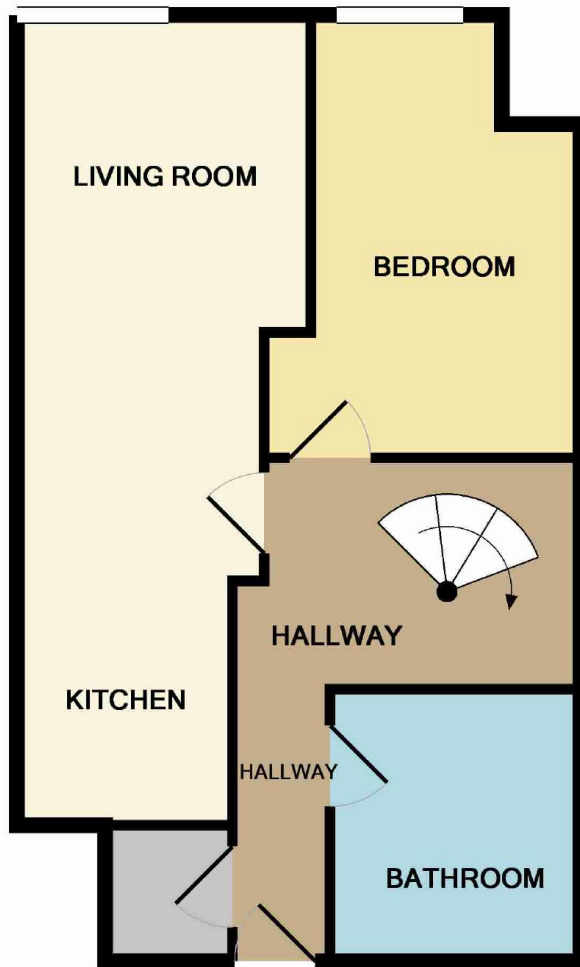
EPC Rating - G

Floor Area - 792 sq ft

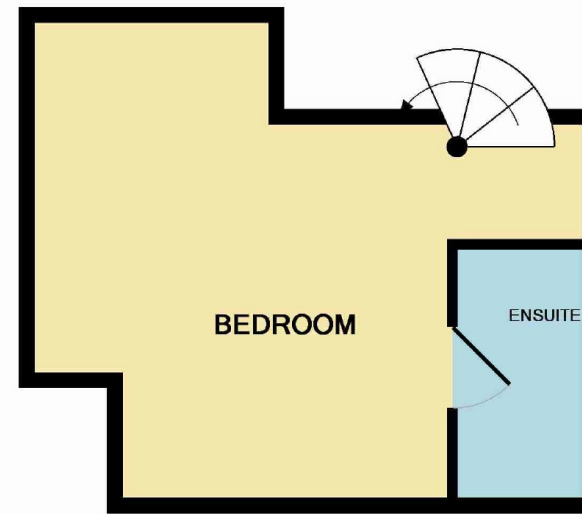
Local Authority - Manchester Council

Council Tax - Band D





GROUND FLOOR



1ST FLOOR

Measurements are approximate. Not to scale. Illustrative purposes only
 Made with Metropix ©2016



These particulars are believed to be accurate but they are not guaranteed and do not form a contract. Neither Jordan Fishwick nor the vendor or lessor accept any responsibility in respect of these particulars, which are not intended to be statements or representations of fact and any intending purchaser or lessee must satisfy himself by inspection or otherwise as to the correctness of each of the statements contained in these particulars. Any floorplans on this brochure are for illustrative purposes only and are not necessarily to scale.

Offices also at:
 Chorlton | Didsbury | Disley | Glossop | Hale | Macclesfield | Manchester | Sale | Wilmslow | Withington

68 The Arches, Whitworth Street West, Manchester, M1

0161 833 9499

manchester@jordanfishwick.co.uk

www.jordanfishwick.co.uk