



Apt 18 Islington Wharf, 151 Great Ancoats Street, New Islington, Manchester, M4

CD11

This corner 3rd floor two bedroom apartment is located in the popular Islington Wharf, New Islington. Entrance hall with heating and ventilation cupboard, spacious living room with floor to ceiling windows, open through to the dining and kitchen area. The kitchen has oven, hob, dishwasher and sink unit. The master bedroom has en-suite shower room, second double bedroom and family bathroom. Communal heating systems on demand. No Chain. Parking Included. MORTGAGE BUYERS WELCOME

Price £245,000

Viewing arrangements

Viewing strictly by appointment through the agent

245 Deansgate, Manchester, M3 4EN 0161 833 9499 opt 3

Entrance Hall

Laminate flooring, radiator and storage cupboard housing ventilation and heating system.

Living Room

15'3" x 13'8"

Floor to ceiling corner windows with laminate flooring and radiator. Open through to-

Kitchen/Diner

16'9" x 8'1"

Same floor to ceiling window and laminate flooring. The kitchen has wall and base units with sink, oven hob and dishwasher

Master Bedroom

12'5" x 10'5"

Two double glazed windows and radiator

En-Suite

8'3" x 3'11"

Walk in shower cubicle with tiling, wash hand basin and w.c. Chrome heated towel rail.

Bedroom Two

10'3" x 10'3"

Two double glazed windows and radiator

Bathroom

8'2" x 5'6"

Three piece suite with shower attachment, wash hand basin and w.c. Tiled walls and chrome radiator.

Externally

Allocated underground Parking space

Additional Information

Lease 250 years from 2006, (20 year reviews)

Ground Rent £200 pa

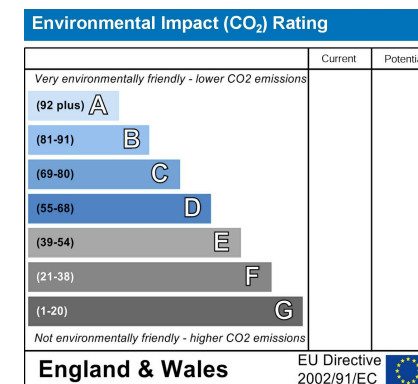
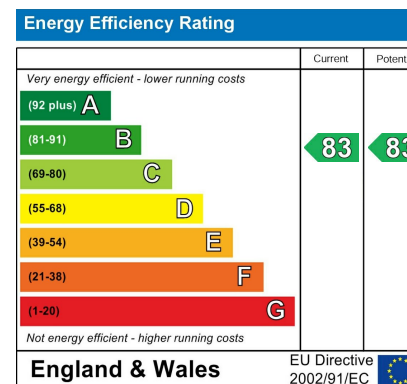
Service Charge £3059.38

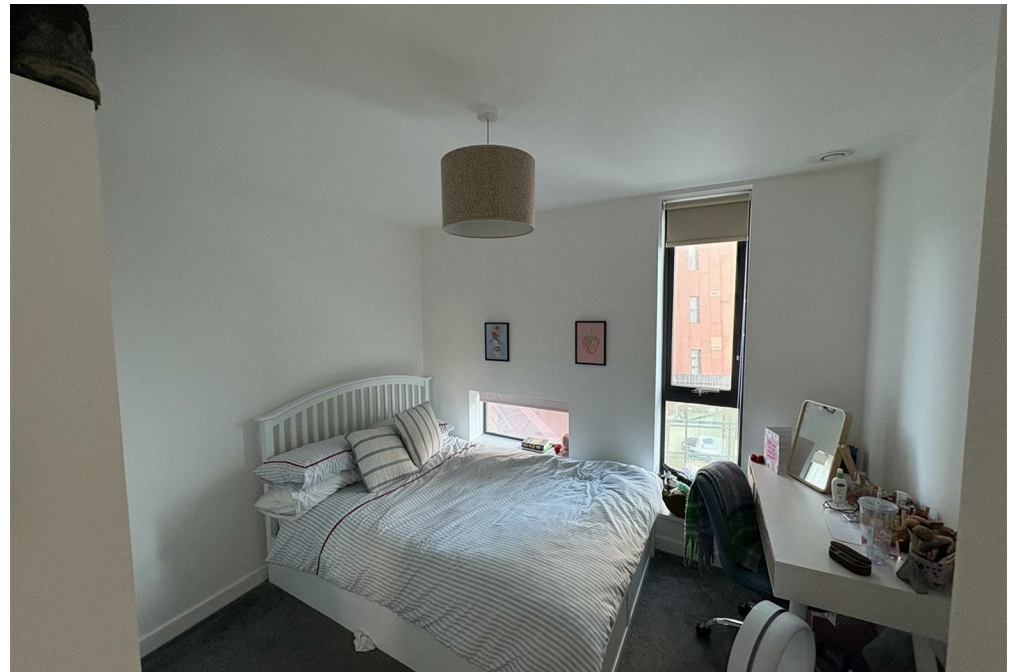
Buildings Insurance £792.02p pa

Building Managed by Zenith

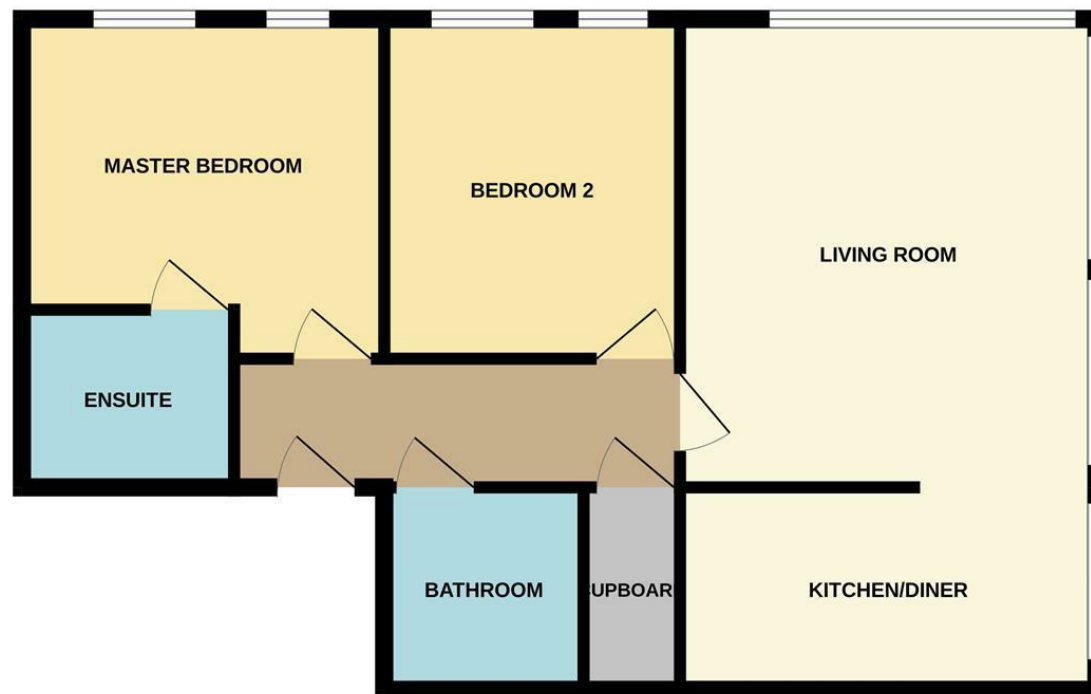
Agents Notes

To be able to purchase a property in the United Kingdom all agents have a legal requirement to conduct Identity checks on all customers involved in the transaction to fulfil their obligations under Anti Money Laundering regulations. We outsource this check to a third party and a charge will apply. Ask the branch for further details.





GROUND FLOOR



Measurements are approximate. Not to scale. Illustrative purposes only.
Made with Metropix ©2025



These particulars are believed to be accurate but they are not guaranteed and do not form a contract. Neither Jordan Fishwick nor the vendor or lessor accept any responsibility in respect of these particulars, which are not intended to be statements or representations of fact and any intending purchaser or lessee must satisfy himself by inspection or otherwise as to the correctness of each of the statements contained in these particulars. Any floorplans on this brochure are for illustrative purposes only and are not necessarily to scale.

Offices at: Chorlton, Didsbury, Disley, Hale, Glossop, Macclesfield, Manchester Deansgate, Manchester Whitworth Street, New Mills, Sale, Wilmslow and Withington

245 Deansgate, Manchester, M3 4EN

0161 833 9499 opt 3

manchester@jordanfishwick.co.uk
www.jordanfishwick.co.uk

