



jordanfishwick

Apt 208 Spectrum, Block 5, M3 7BT
£900 Per Calendar Month



Spectrum Blackfriars Road M3 7BT

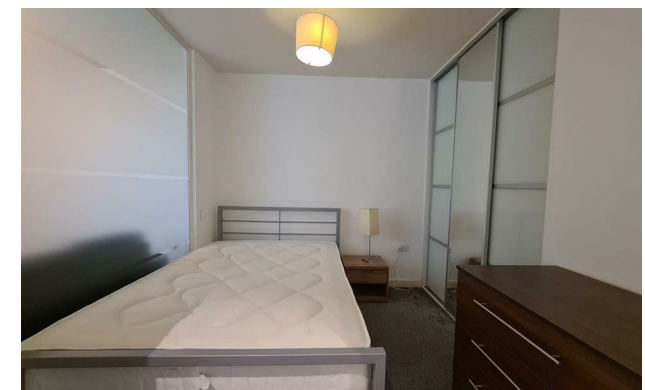
£900 Per Calendar Month

The Property

PLEASE NOTE - BUILDING REMEDIAL WORKS ARE DUE TO START IN JANUARY 2026. THEREFORE DISRUPTIONS MAY OCCUR


Available Mid January. This first floor STUDIO apartment is located a short distance from Deansgate and Victoria Station. Spectrum is a Dandara development and is finished to a high specification throughout. Entrance hall with video entry phone, open to the living room and bedroom area. The living/kitchen has sliding patio doors to the juliet balcony. The kitchen comes with oven, hob, washer/dryer and fridge. An obscure glass screen separates the bedroom which has triple sliding wardrobe doors. The attractive shower room has concealed storage, tiled walls and floors with walk in shower. Furnished. Tax Band B. EPC Rating B. Additional water charge £35.00 PCM. NO PARKING.

VIDEO/ PHOTO OFFERS NOT ACCEPTED - PLEASE CALL TO BOOK A VIEWING



- Available Mid January
- 1st Floor Studio Apartment
- Furnished
- Tax Band A
- EPC Rating B
- No Parking
- Close to City Centre
- 24 Hour Concierge
- Close to Victoria Train Station



Energy Efficiency Rating		
	Current	Potential
Very energy efficient - lower running costs		
(92 plus) A		
(81-91) B	85	88
(69-80) C		
(55-68) D		
(39-54) E		
(21-38) F		
(1-20) G		
Not energy efficient - higher running costs		
England & Wales	EU Directive 2002/91/EC 	





These particulars are believed to be accurate but they are not guaranteed and do not form a contract. Neither Jordan Fishwick nor the vendor or lessor accept any responsibility in respect of these particulars, which are not intended to be statements or representations of fact and any intending purchaser or lessee must satisfy himself by inspection or otherwise as to the correctness of each of the statements contained in these particulars. Any floorplans on this brochure are for illustrative purposes only and are not necessarily to scale.

Offices at: Offices at Chorlton, Didsbury, Disley, Hale, Glossop, Macclesfield, Manchester Deansgate, Manchester Whitworth Street, New Mills, Sale, Wilmslow and Withington